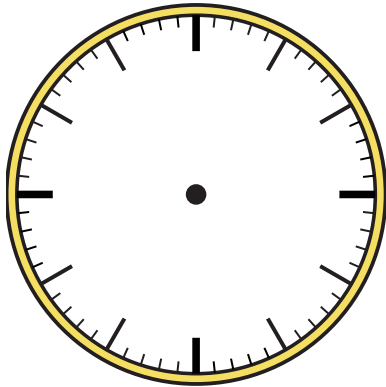


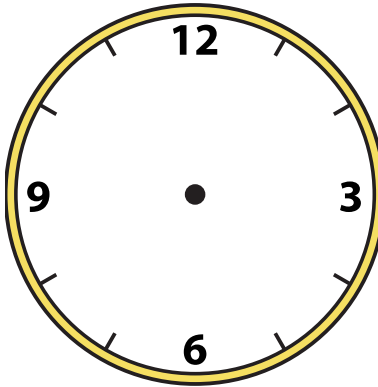


Draw the hour and minute hand on the clock so it represents the time shown.

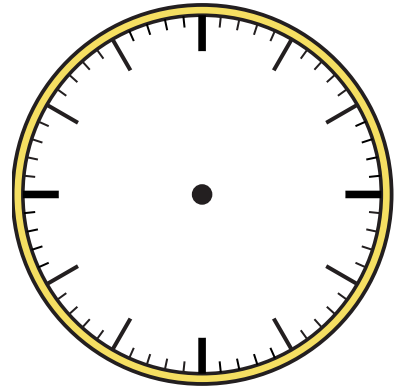
1) 1:30



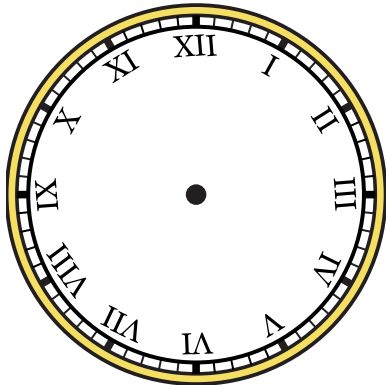
2) 4:30



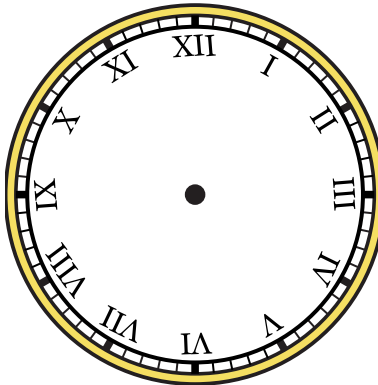
3) 4:40



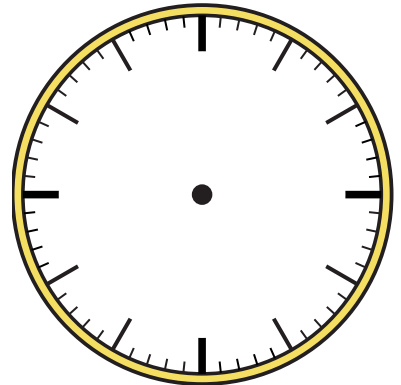
4) 1:20



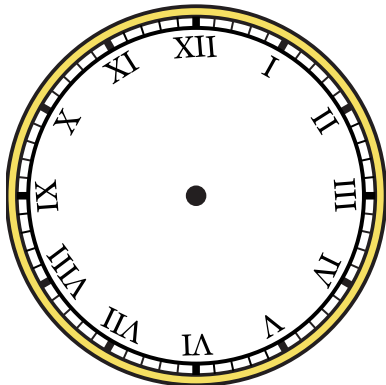
5) 7:50



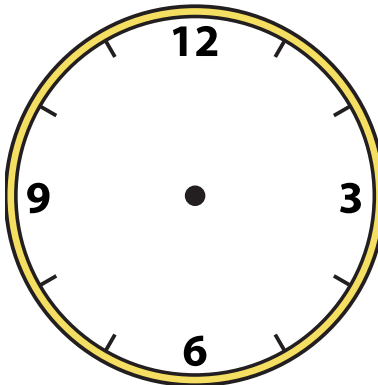
6) 12:05



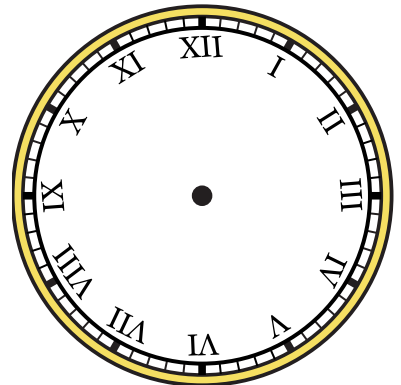
7) 8:15



8) 2:15



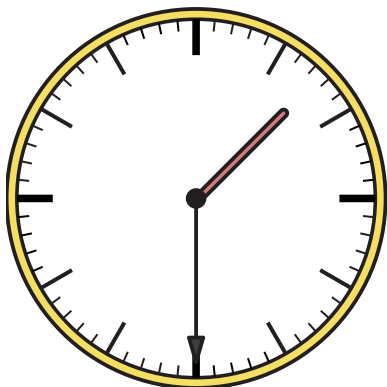
9) 6:00



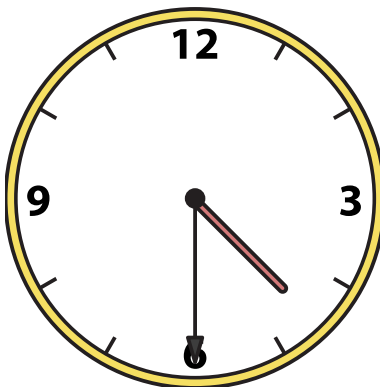


Draw the hour and minute hand on the clock so it represents the time shown.

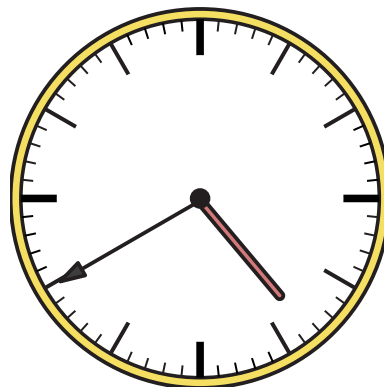
1) 1:30



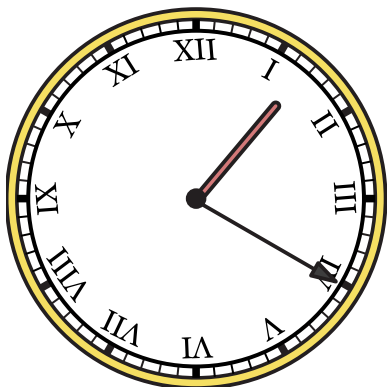
2) 4:30



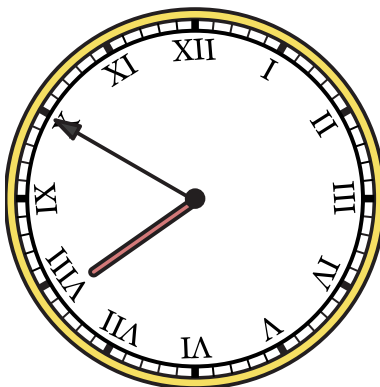
3) 4:40



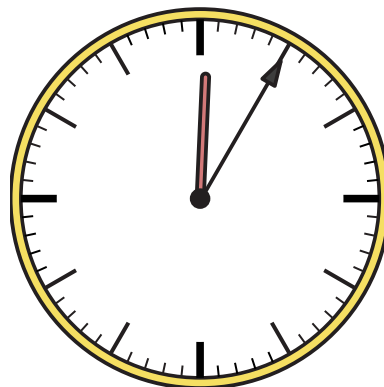
4) 1:20



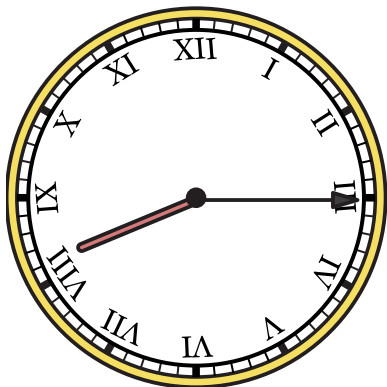
5) 7:50



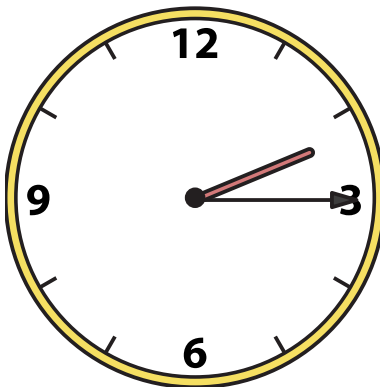
6) 12:05



7) 8:15



8) 2:15



9) 6:00

