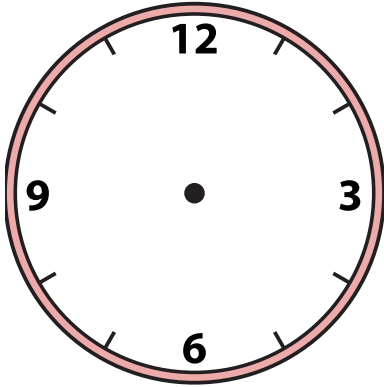




Draw the hour and minute hand on the clock so it represents the time shown.

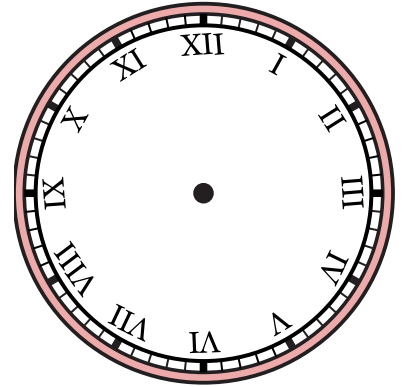
1) 9:48



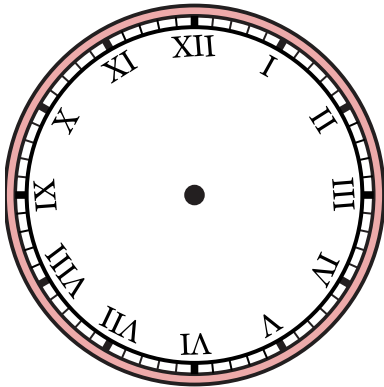
2) 4:05



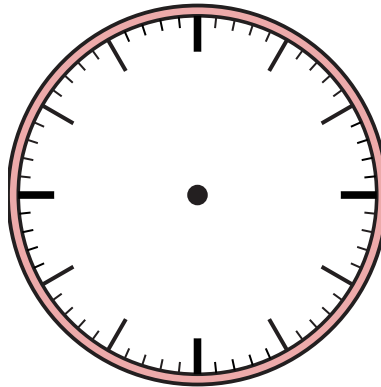
3) 7:21



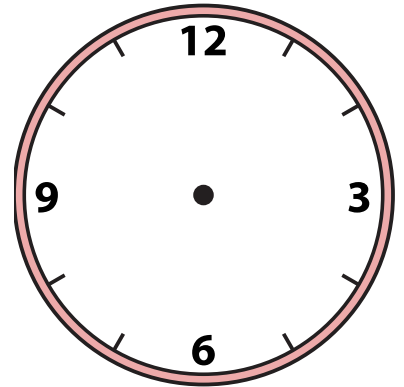
4) 11:04



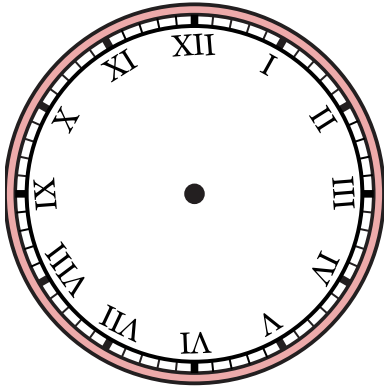
5) 10:19



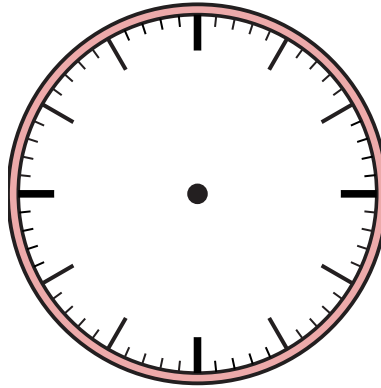
6) 12:33



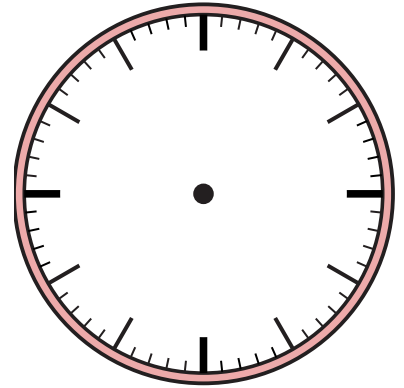
7) 7:14



8) 12:15



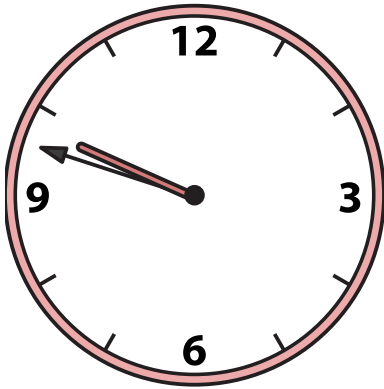
9) 11:40



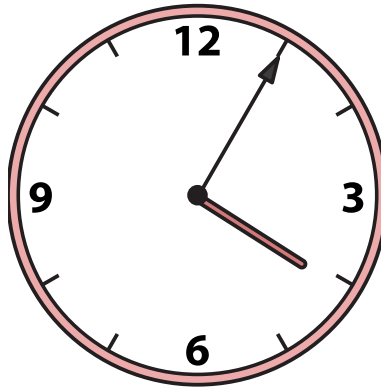


Draw the hour and minute hand on the clock so it represents the time shown.

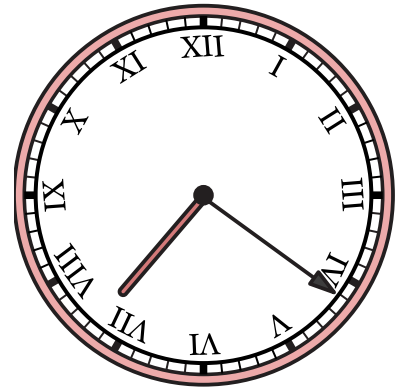
1) 9:48



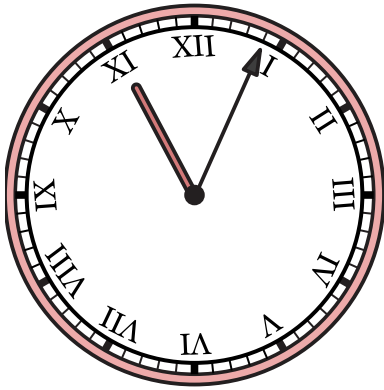
2) 4:05



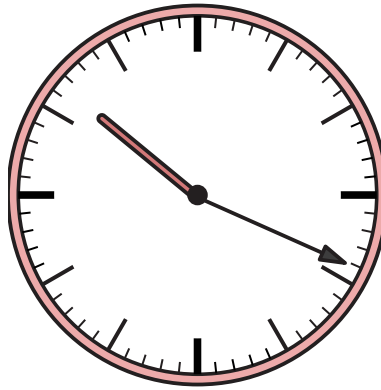
3) 7:21



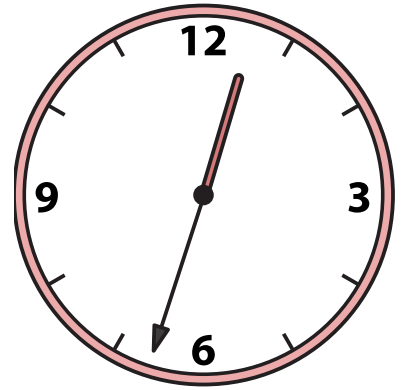
4) 11:04



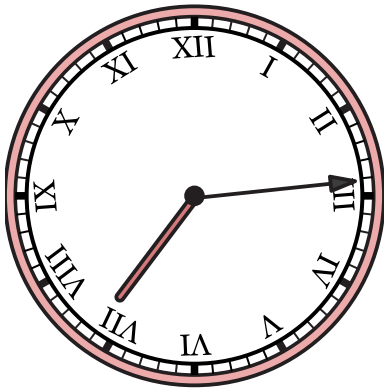
5) 10:19



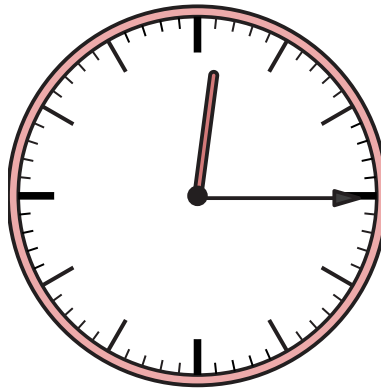
6) 12:33



7) 7:14



8) 12:15



9) 11:40

