



Draw the hour and minute hand on the clock so it represents the time shown.

1) 3:30



2) 5:30



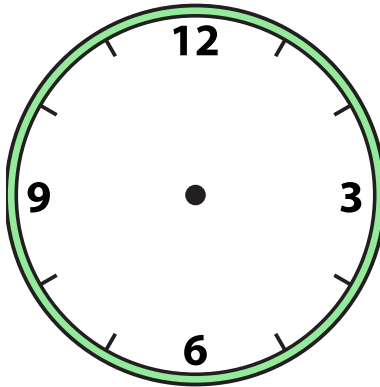
3) 3:00



4) 7:00



5) 12:30



6) 4:30



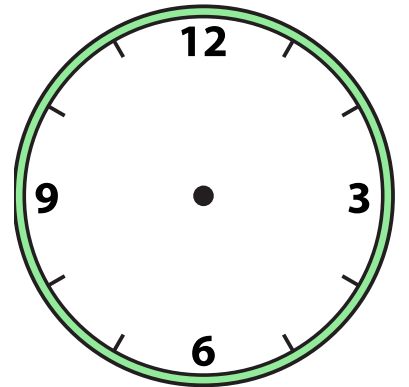
7) 5:00



8) 9:00



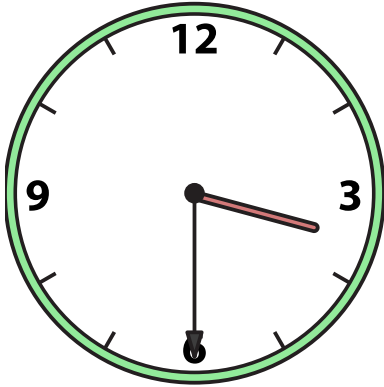
9) 6:30



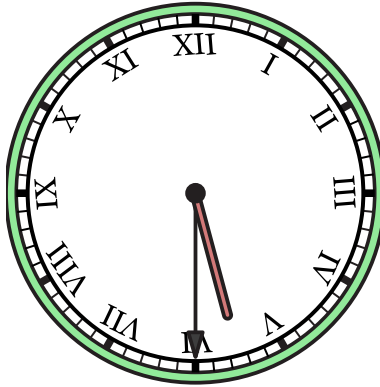


Draw the hour and minute hand on the clock so it represents the time shown.

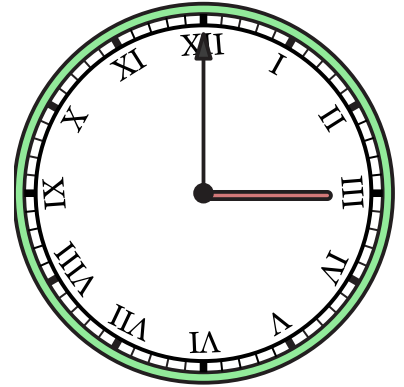
1) 3:30



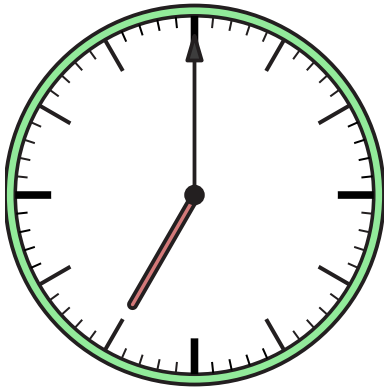
2) 5:30



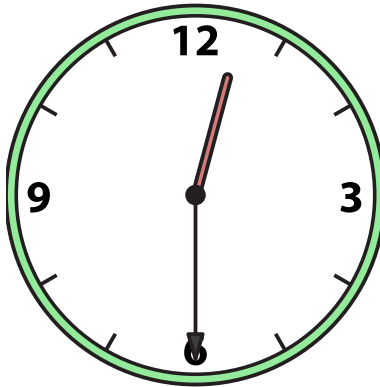
3) 3:00



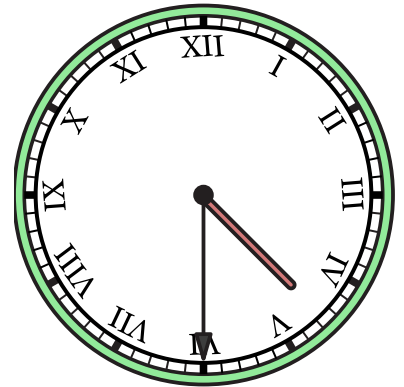
4) 7:00



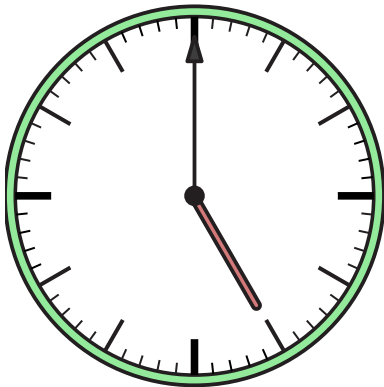
5) 12:30



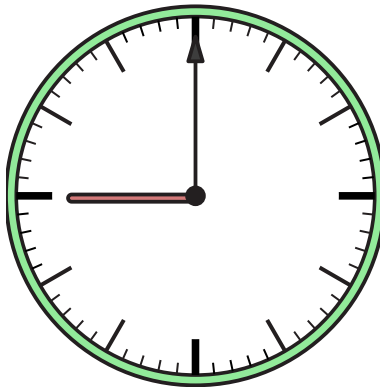
6) 4:30



7) 5:00



8) 9:00



9) 6:30

