



Draw the hour and minute hand on the clock so it represents the time shown.

1) 2:00



2) 12:00



3) 9:15



4) 1:30



5) 9:45



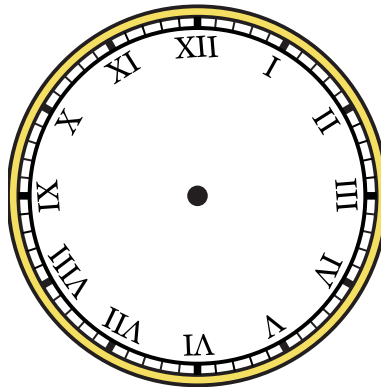
6) 5:00



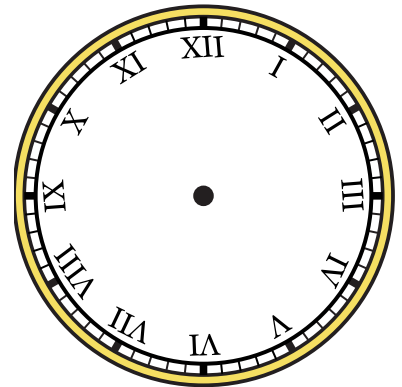
7) 10:15



8) 12:45



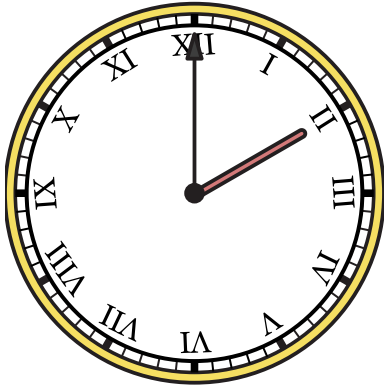
9) 2:30



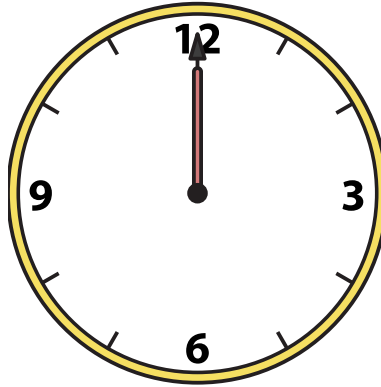


Draw the hour and minute hand on the clock so it represents the time shown.

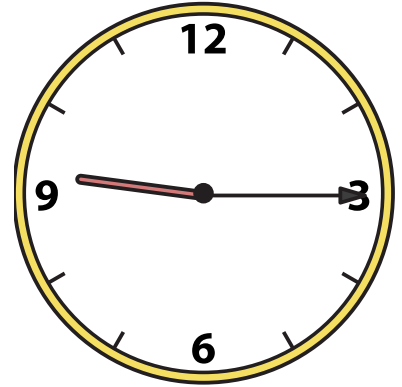
1) 2:00



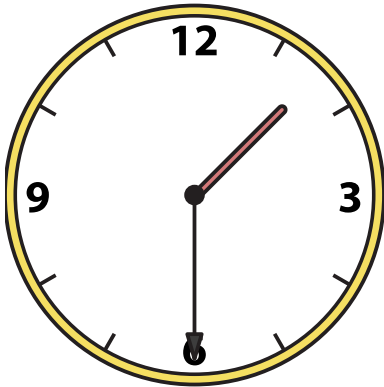
2) 12:00



3) 9:15



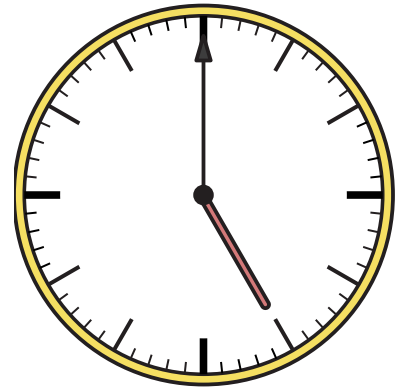
4) 1:30



5) 9:45



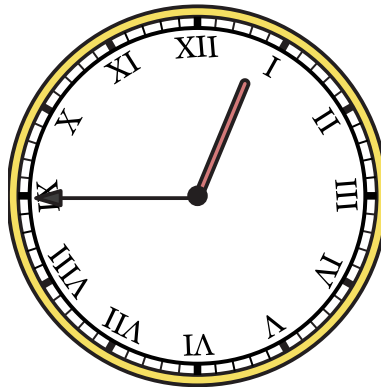
6) 5:00



7) 10:15



8) 12:45



9) 2:30

