



Solve each problem using a tape diagram.

Answers

- 1) Nancy went shopping on Black Friday. She spent \$360 total. $\frac{4}{6}$ of what she spent was at Best Buy. She spent $\frac{1}{2}$ of what was left at Kohls and the rest she spent at Target. How much did she spend at Target?
- 2) A pizzeria owner sold 370 pizzas on Friday. $\frac{1}{5}$ of all the pizzas sold were pepperoni. $\frac{1}{4}$ of the rest sold were cheese. How many pizzas did he sell that weren't pepperoni or cheese?
- 3) A store started with 455 sodas. They sold $\frac{2}{7}$ of them over the next month and they had to throw out $\frac{1}{5}$ of the ones that were left because they were expired. How many sodas did they have at the end?
- 4) At Isabel's Ice Cream Emporium they sold 890 ice cream cones in a day. $\frac{7}{10}$ of them sold were chocolate. $\frac{1}{3}$ of the ones that weren't chocolate were vanilla. And the remaining were pistachio. How many pistachio cones did they sell?
- 5) On Kaleb's phone he has 60 songs. $\frac{2}{5}$ of the songs are alternative. $\frac{1}{3}$ of the rest of the songs were rock. How many songs are on his phone that aren't rock or alternative?

1. _____

2. _____

3. _____

4. _____

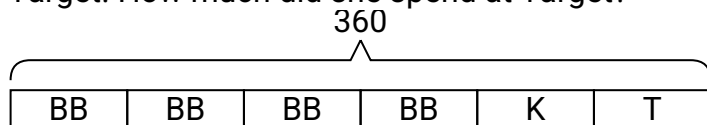
5. _____



Solve each problem using a tape diagram.

Answers

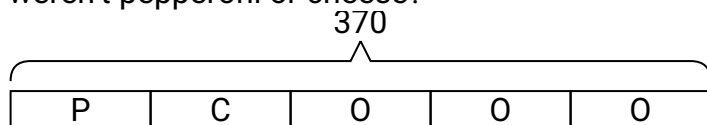
- 1) Nancy went shopping on Black Friday. She spent \$360 total. $\frac{4}{6}$ of what she spent was at Best Buy. She spent $\frac{1}{2}$ of what was left at Kohls and the rest she spent at Target. How much did she spend at Target?



T = Target
BB = Best Buy
K = Kohls

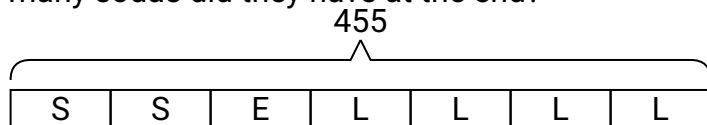
1. **60**2. **222**3. **260**4. **178**5. **24**

- 2) A pizzeria owner sold 370 pizzas on Friday. $\frac{1}{5}$ of all the pizzas sold were pepperoni. $\frac{1}{4}$ of the rest sold were cheese. How many pizzas did he sell that weren't pepperoni or cheese?



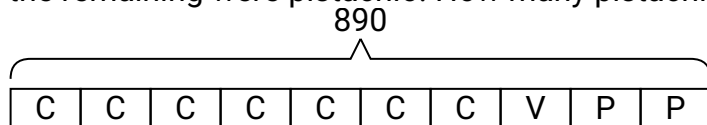
O = Other
P = Pepperoni
C = Cheese

- 3) A store started with 455 sodas. They sold $\frac{2}{7}$ of them over the next month and they had to throw out $\frac{1}{5}$ of the ones that were left because they were expired. How many sodas did they have at the end?



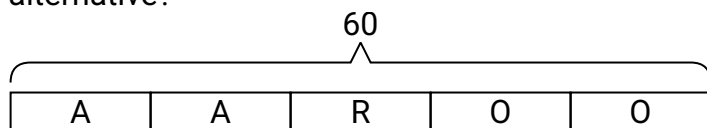
L = Left
S = Sold
E = Expired

- 4) At Isabel's Ice Cream Emporium they sold 890 ice cream cones in a day. $\frac{7}{10}$ of them sold were chocolate. $\frac{1}{3}$ of the ones that weren't chocolate were vanilla. And the remaining were pistachio. How many pistachio cones did they sell?



P = Pistachio
C = Chocolate
V = Vanilla

- 5) On Kaleb's phone he has 60 songs. $\frac{2}{5}$ of the songs are alternative. $\frac{1}{3}$ of the rest of the songs were rock. How many songs are on his phone that aren't rock or alternative?



O = Other
A = Alternative
R = Rock