



Determine which letter best represents the weight.

**Ounce (oz)**

An ounce is about the weight of a slice of bread.



**Pound (lb)**

A pound is about the weight of a can of vegetables.



**Remember:**

There are 16 ounces in 1 pound.

**Answers**

1. \_\_\_\_\_
2. \_\_\_\_\_
3. \_\_\_\_\_
4. \_\_\_\_\_
5. \_\_\_\_\_
6. \_\_\_\_\_
7. \_\_\_\_\_
8. \_\_\_\_\_
9. \_\_\_\_\_

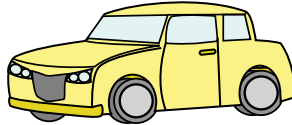
1)



Stove

- A. 30 pounds
- B. 130 pounds
- C. 160 ounces
- D. 16 ounces

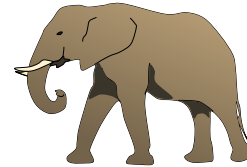
2)



Car

- A. 2000 pounds
- B. 5200 ounces
- C. 500 pounds
- D. 15 ounces

3)



Elephant

- A. 15 ounces
- B. 4000 ounces
- C. 11000 pounds
- D. 300 pounds

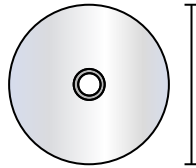
4)



Notebook Paper

- A. 3 ounces
- B. 10 ounces
- C. 2 pounds
- D. 0.1 ounces

5)



DVD

- A. 0.6 pounds
- B. 1 pound
- C. 2.5 pounds
- D. 16 ounces

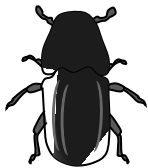
6)



Popcorn

- A. 0.3 pounds
- B. 0.04 ounces
- C. 2 pounds
- D. 10 ounces

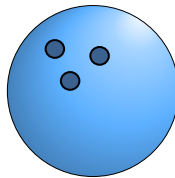
7)



Beetle

- A. 8 ounces
- B. 16 ounces
- C. 4 pounds
- D. 0.04 ounces

8)



Bowling Ball

- A. 198 pounds
- B. 13 pounds
- C. 7 ounces
- D. 110 pounds

9)



Spoon

- A. 0.11 ounces
- B. 10 pounds
- C. 7 pounds
- D. 0.8 ounces



Determine which letter best represents the weight.

**Ounce (oz)**

An ounce is about the weight of a slice of bread.



**Pound (lb)**

A pound is about the weight of a can of vegetables.



**Remember:**

There are 16 ounces in 1 pound.

**Answers**

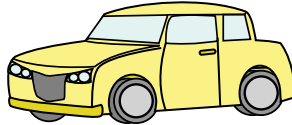
1)



Stove

- A. 30 pounds
- B. 130 pounds
- C. 160 ounces
- D. 16 ounces

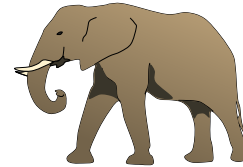
2)



Car

- A. 2000 pounds
- B. 5200 ounces
- C. 500 pounds
- D. 15 ounces

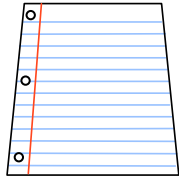
3)



Elephant

- A. 15 ounces
- B. 4000 ounces
- C. 11000 pounds
- D. 300 pounds

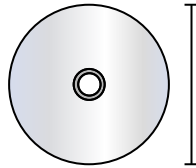
4)



Notebook Paper

- A. 3 ounces
- B. 10 ounces
- C. 2 pounds
- D. 0.1 ounces

5)



DVD

- A. 0.6 pounds
- B. 1 pound
- C. 2.5 pounds
- D. 16 ounces

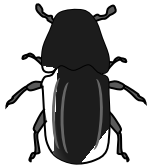
6)



Popcorn

- A. 0.3 pounds
- B. 0.04 ounces
- C. 2 pounds
- D. 10 ounces

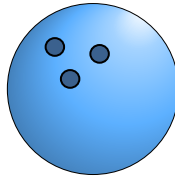
7)



Beetle

- A. 8 ounces
- B. 16 ounces
- C. 4 pounds
- D. 0.04 ounces

8)



Bowling Ball

- A. 198 pounds
- B. 13 pounds
- C. 7 ounces
- D. 110 pounds

9)



Spoon

- A. 0.11 ounces
- B. 10 pounds
- C. 7 pounds
- D. 0.8 ounces

- 1. **B**
- 2. **A**
- 3. **C**
- 4. **D**
- 5. **A**
- 6. **B**
- 7. **D**
- 8. **B**
- 9. **D**