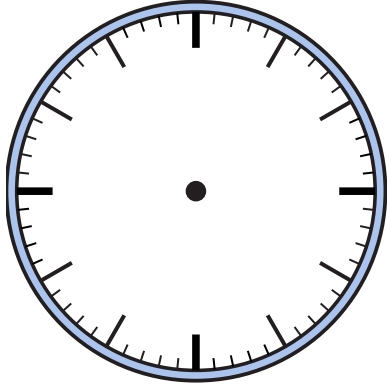


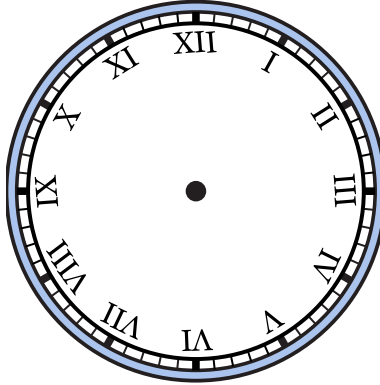


Draw the hour and minute hand on the clocks so they represent the time shown.

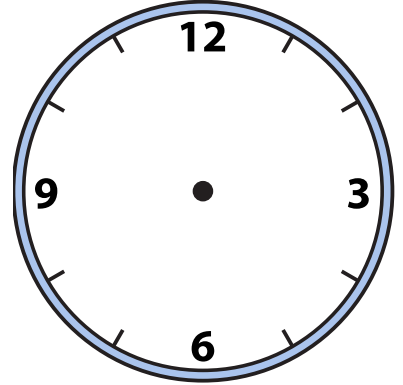
1) 8:35



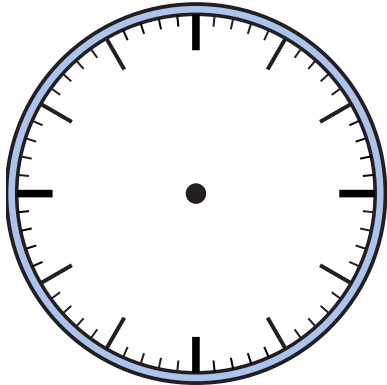
2) 1:40



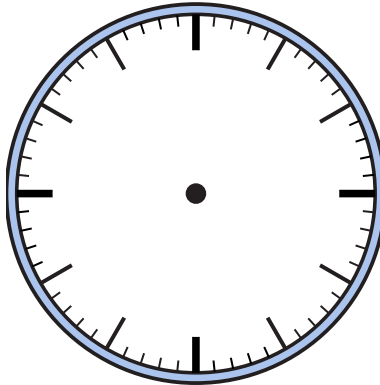
3) 10:20



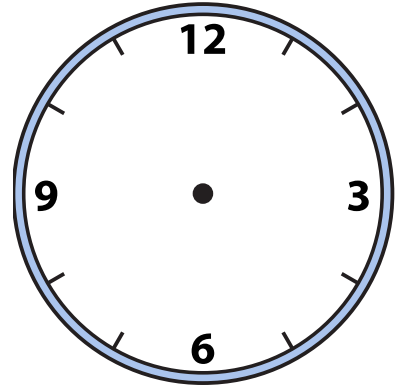
4) 6:25



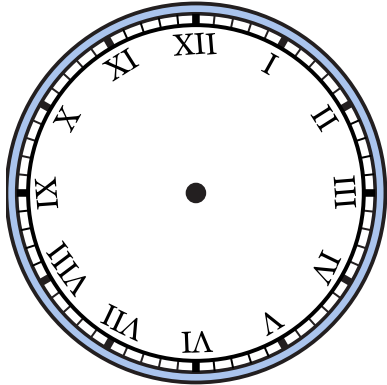
5) 9:10



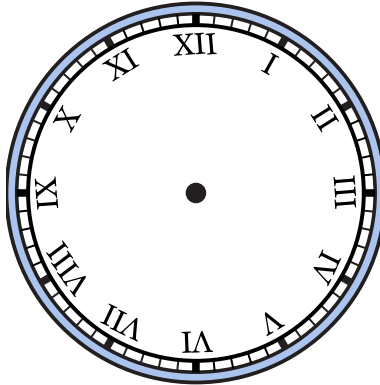
6) 2:50



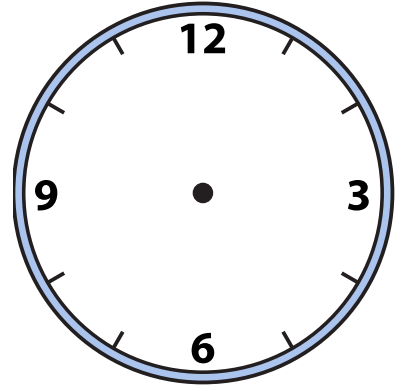
7) 2:00



8) 9:15



9) 11:10

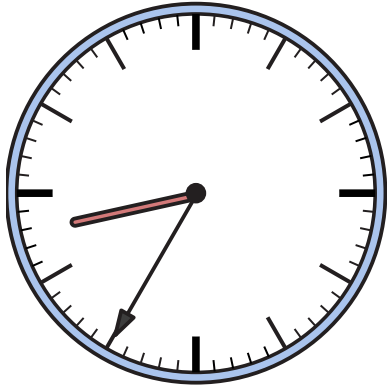




Draw the hour and minute hand on the clocks so they represent the time shown.

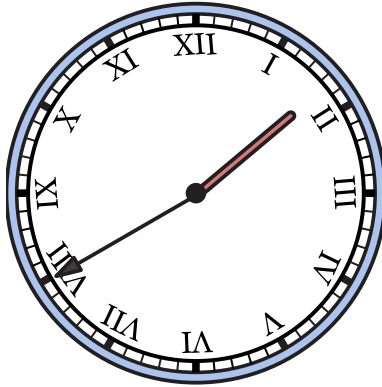
1)

8:35



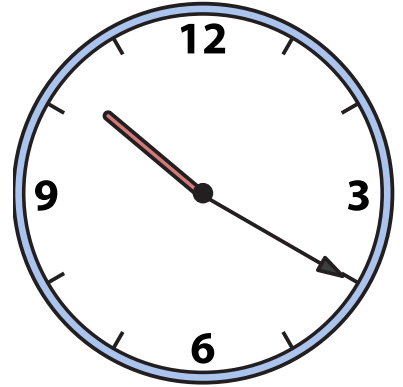
2)

1:40



3)

10:20



4)

6:25



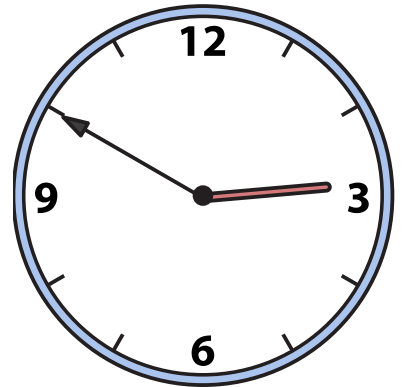
5)

9:10



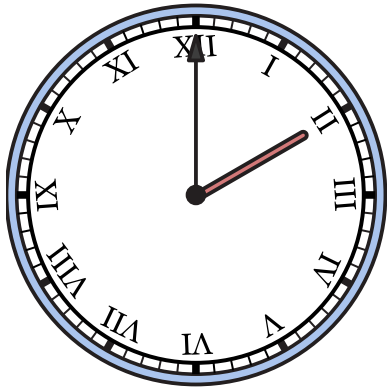
6)

2:50



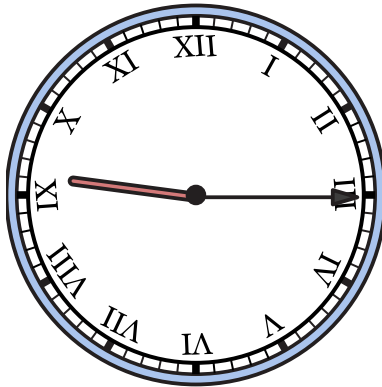
7)

2:00



8)

9:15



9)

11:10

