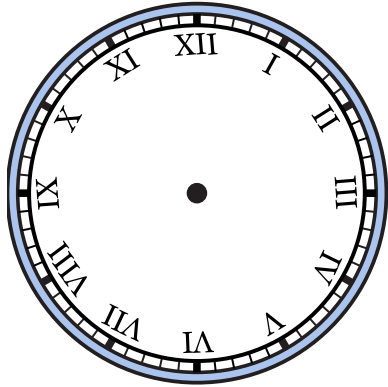


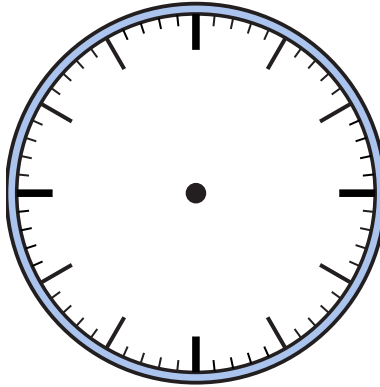


Draw the hour and minute hand on the clocks so they represent the time shown.

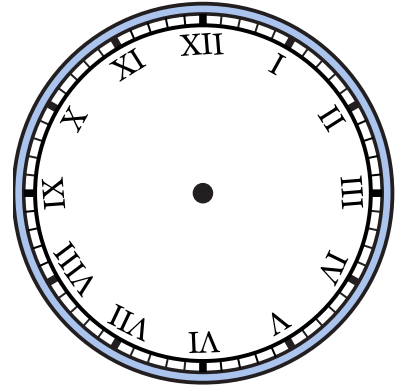
1) 12:45



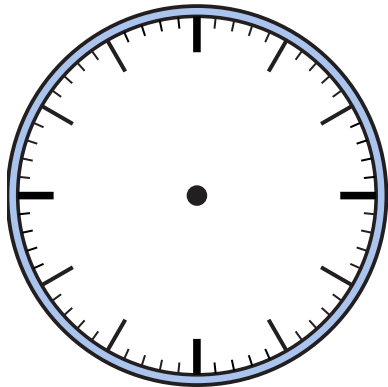
2) 3:05



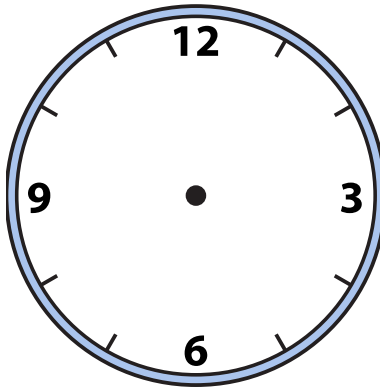
3) 11:40



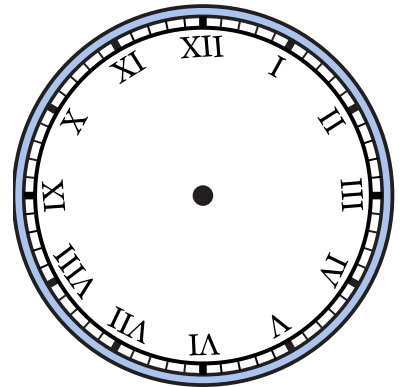
4) 12:10



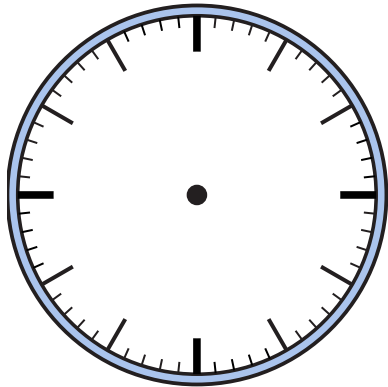
5) 11:25



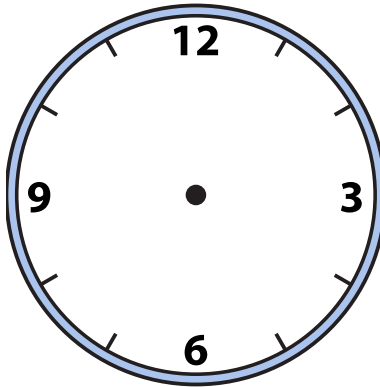
6) 5:55



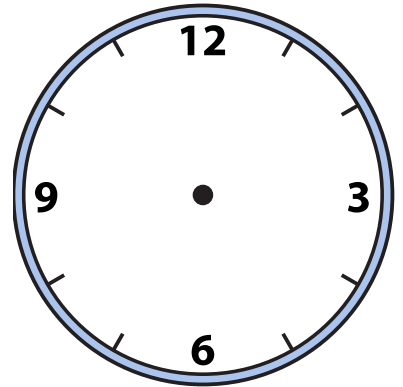
7) 3:00



8) 11:10



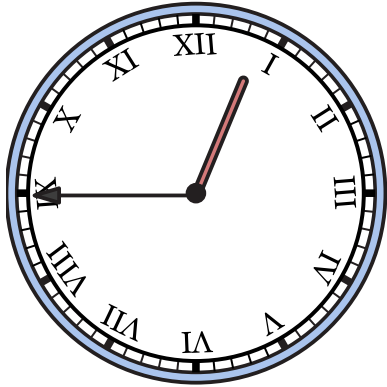
9) 2:05



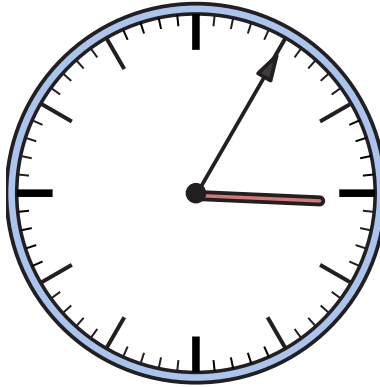


Draw the hour and minute hand on the clocks so they represent the time shown.

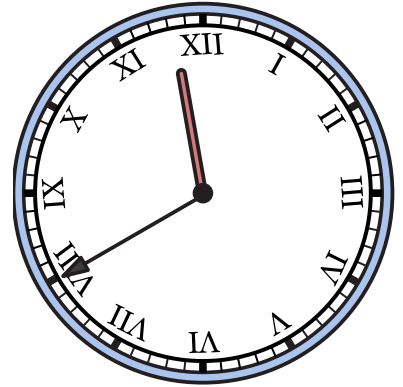
1) 12:45



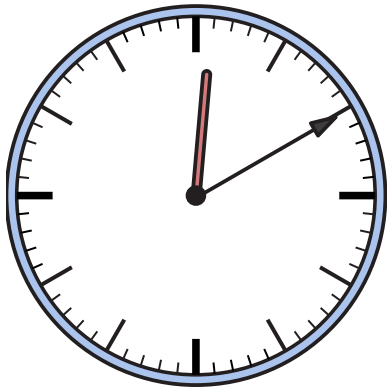
2) 3:05



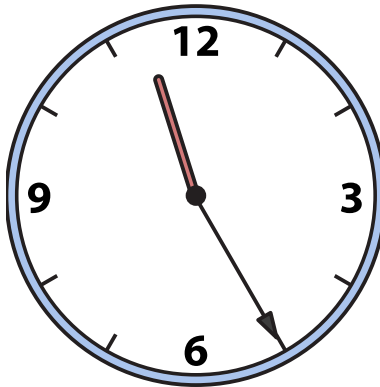
3) 11:40



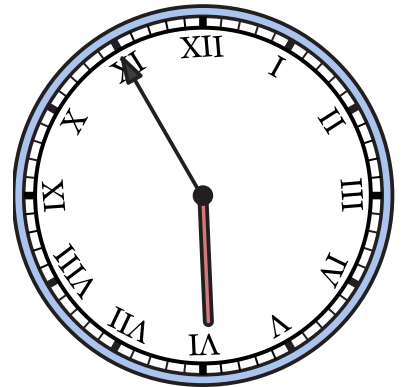
4) 12:10



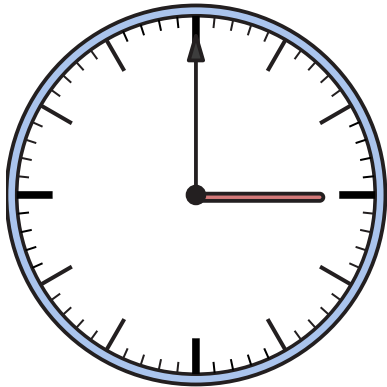
5) 11:25



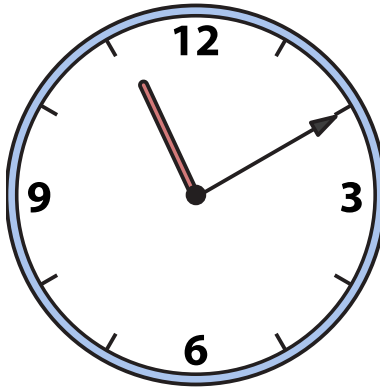
6) 5:55



7) 3:00



8) 11:10



9) 2:05

