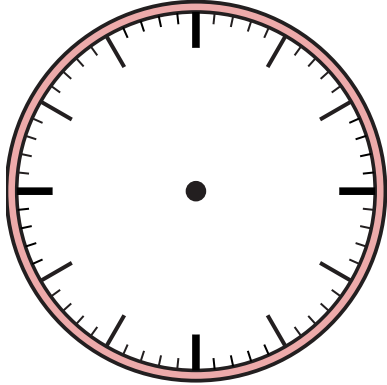


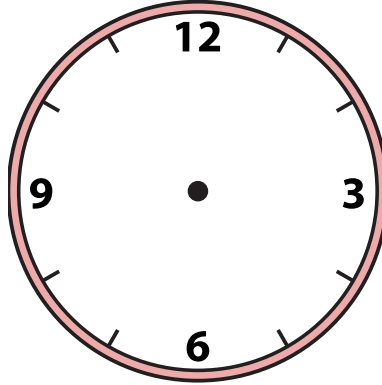


Draw the hour and minute hand on the clocks so they represent the time shown.

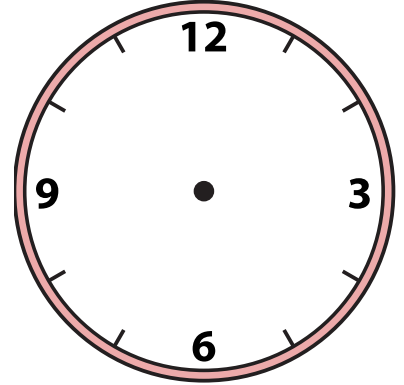
1) 3:54



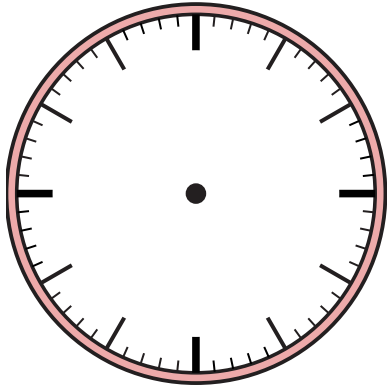
2) 3:11



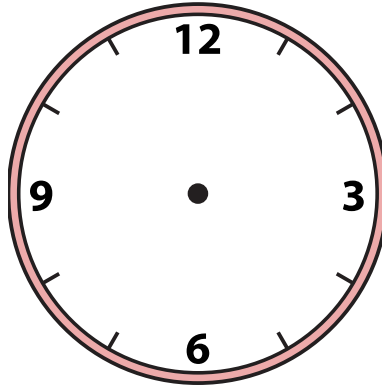
3) 6:06



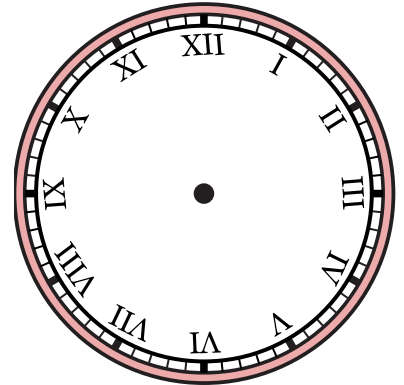
4) 1:21



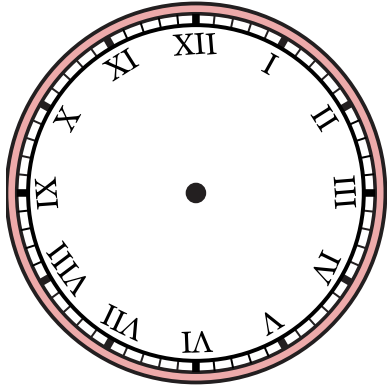
5) 12:02



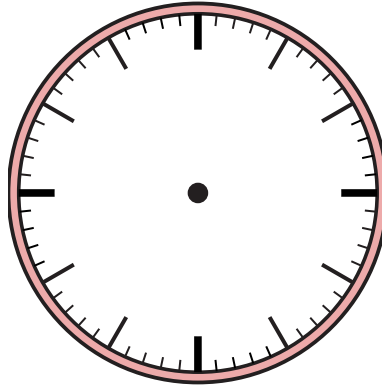
6) 7:15



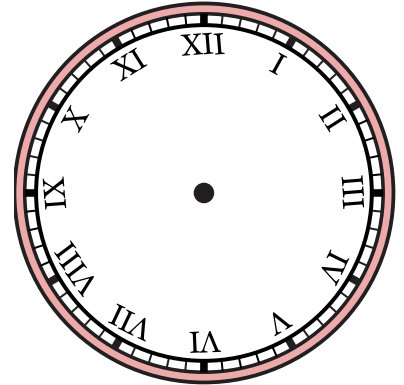
7) 6:03



8) 3:59



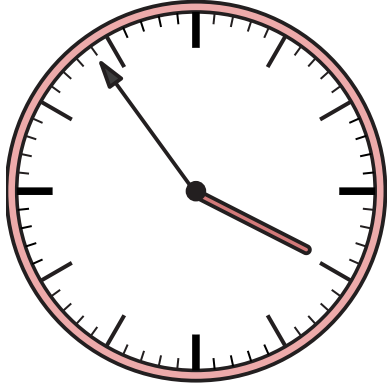
9) 2:59



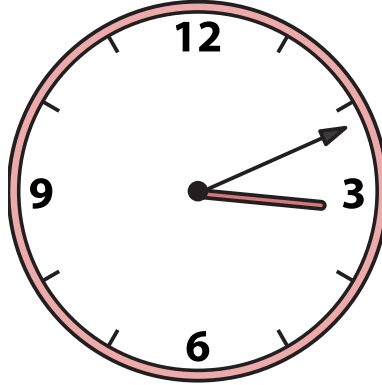


Draw the hour and minute hand on the clocks so they represent the time shown.

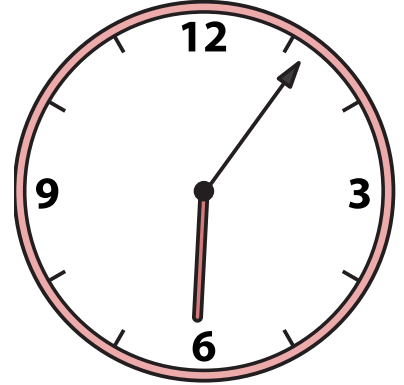
1) 3:54



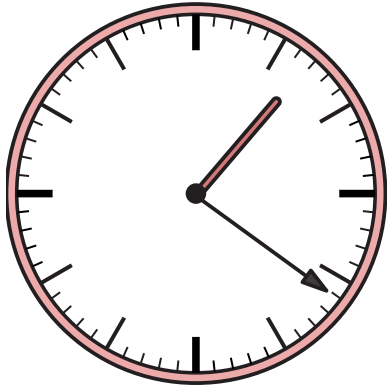
2) 3:11



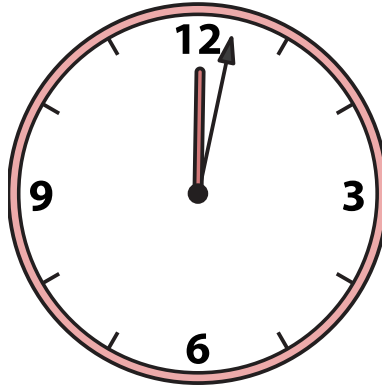
3) 6:06



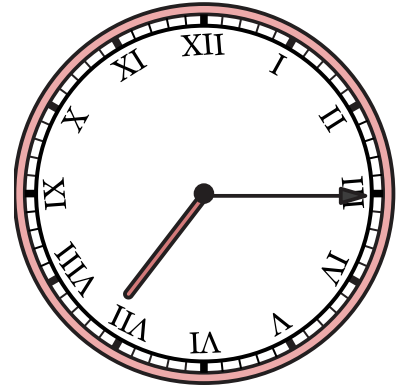
4) 1:21



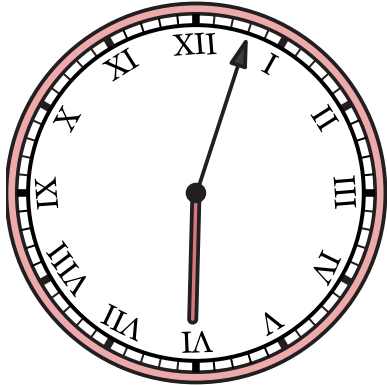
5) 12:02



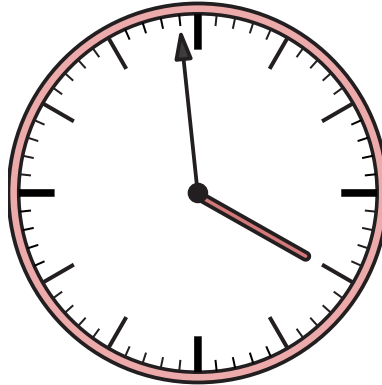
6) 7:15



7) 6:03



8) 3:59



9) 2:59

