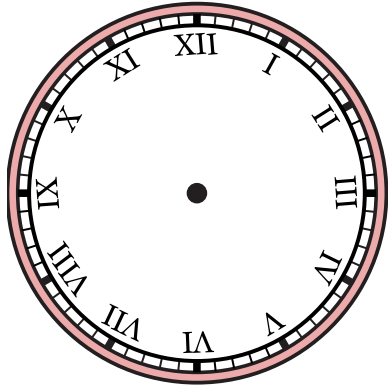


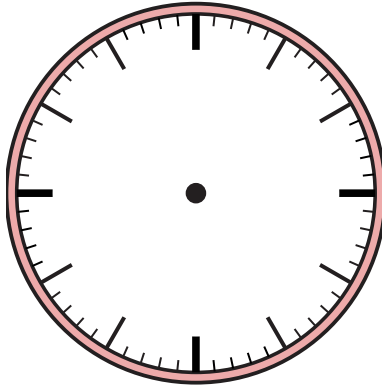


Draw the hour and minute hand on the clocks so they represent the time shown.

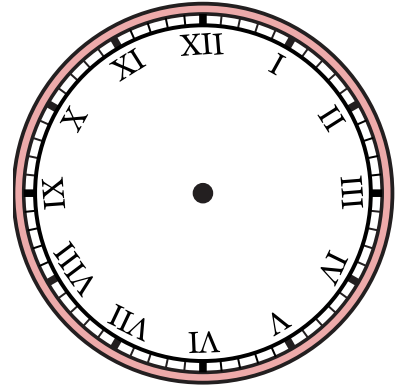
1) 12:56



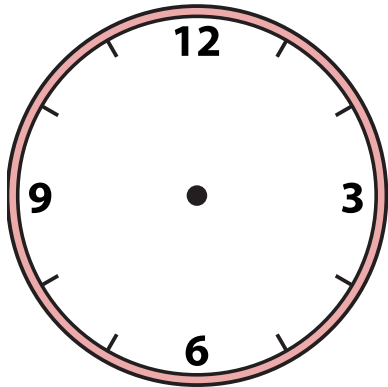
2) 3:03



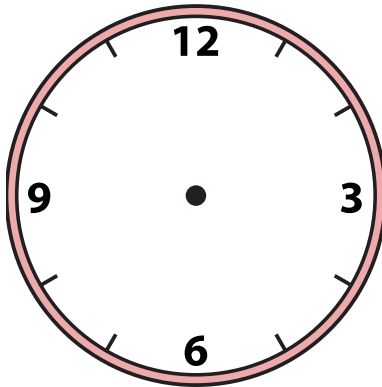
3) 5:33



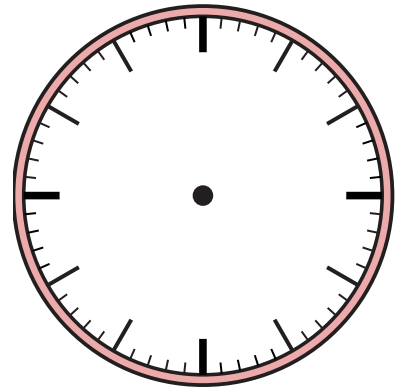
4) 9:10



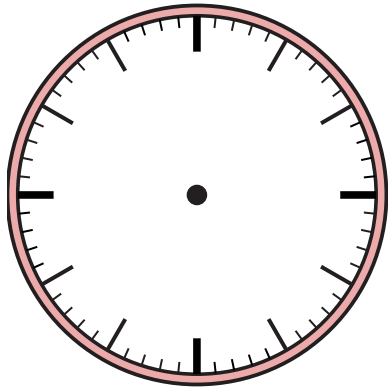
5) 1:56



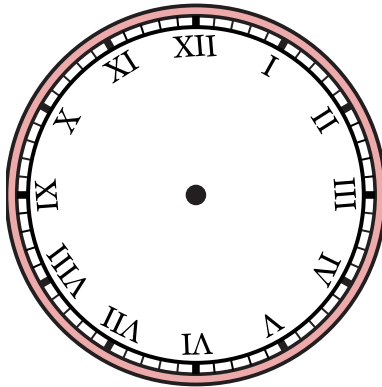
6) 12:00



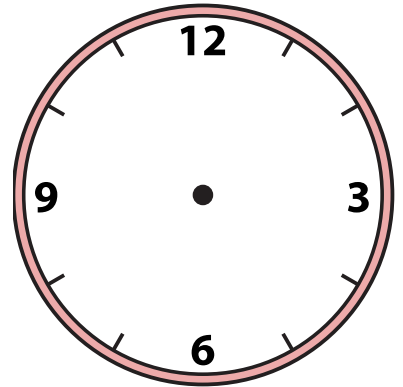
7) 10:23



8) 3:40



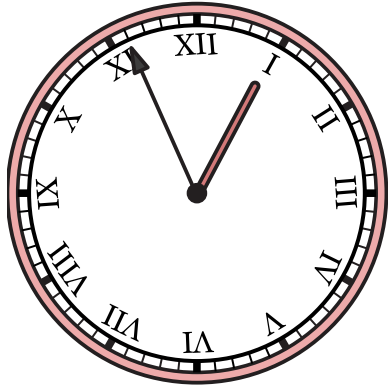
9) 9:46



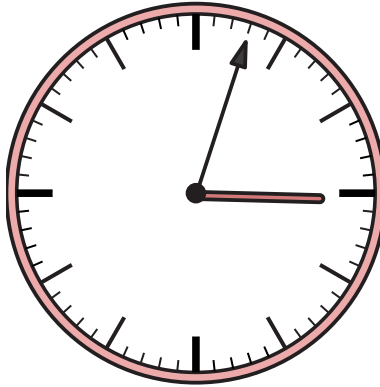


Draw the hour and minute hand on the clocks so they represent the time shown.

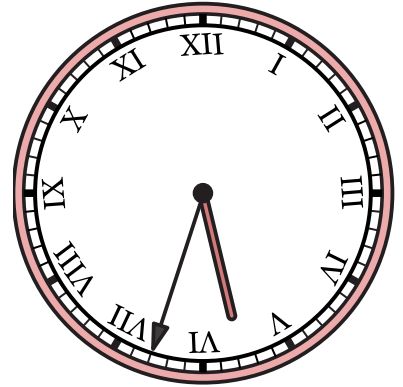
1) 12:56



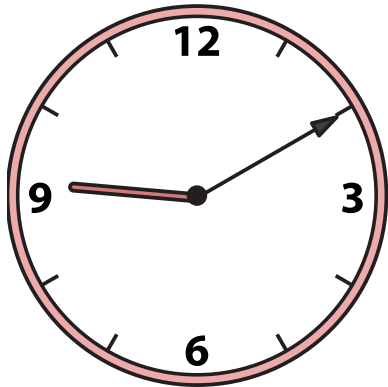
2) 3:03



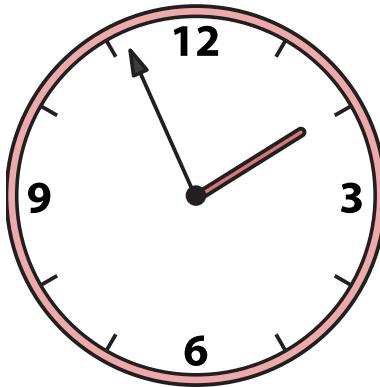
3) 5:33



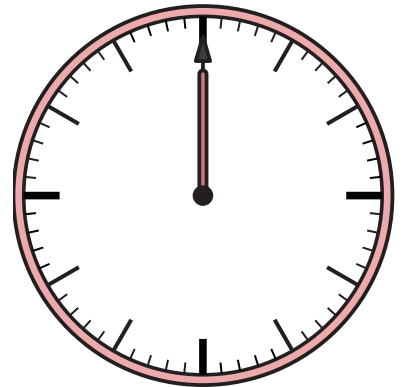
4) 9:10



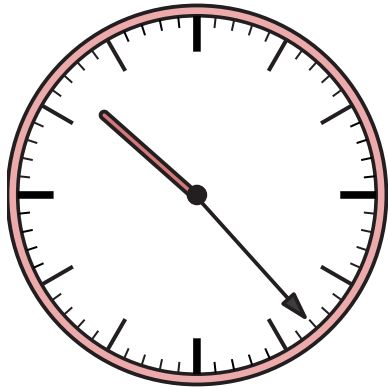
5) 1:56



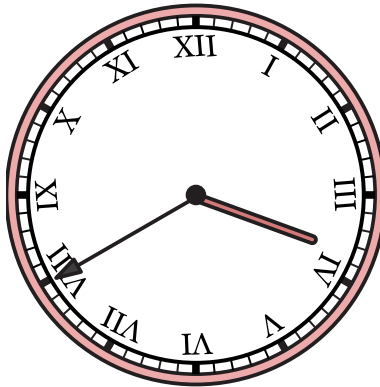
6) 12:00



7) 10:23



8) 3:40



9) 9:46

