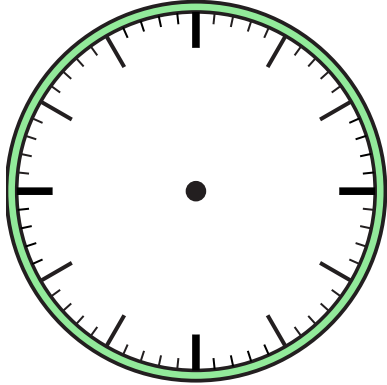


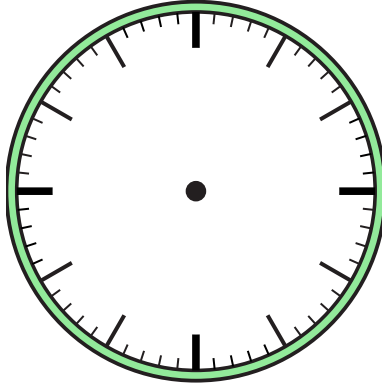


Draw the hour and minute hand on the clocks so they represent the time shown.

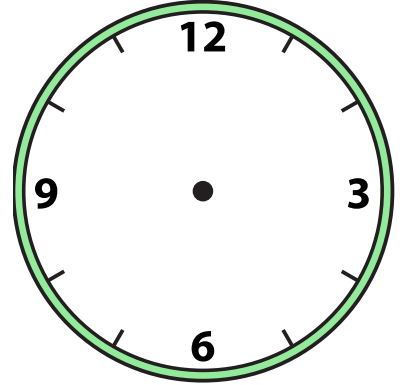
1) 4:30



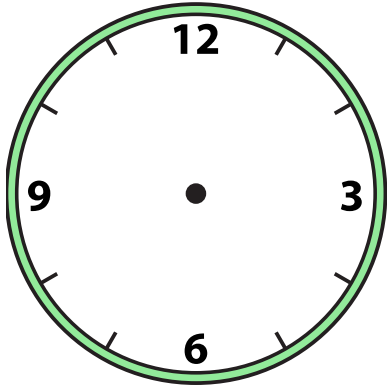
2) 3:00



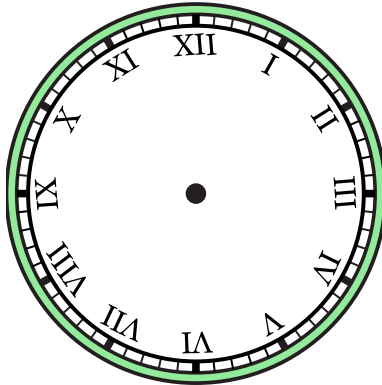
3) 12:00



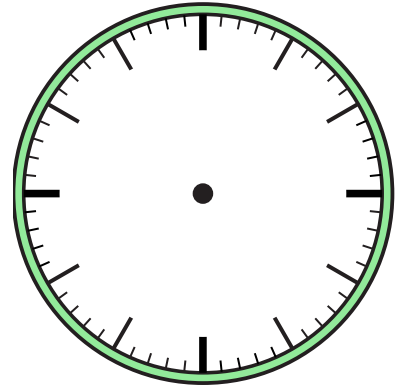
4) 10:30



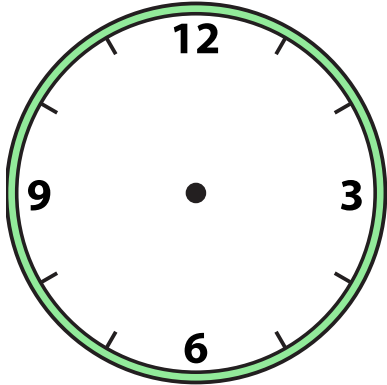
5) 7:00



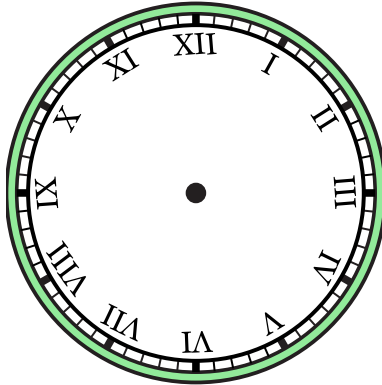
6) 12:30



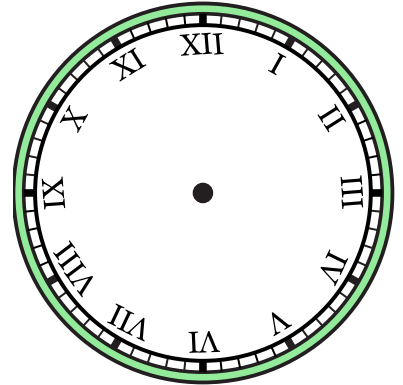
7) 5:00



8) 11:00



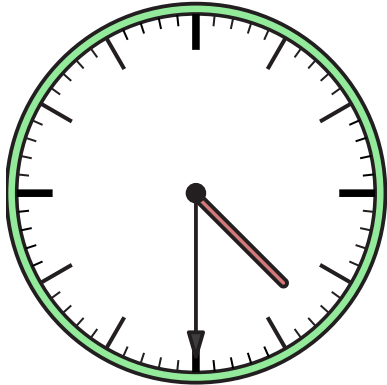
9) 6:30



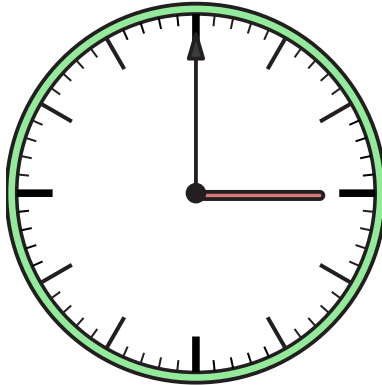


Draw the hour and minute hand on the clocks so they represent the time shown.

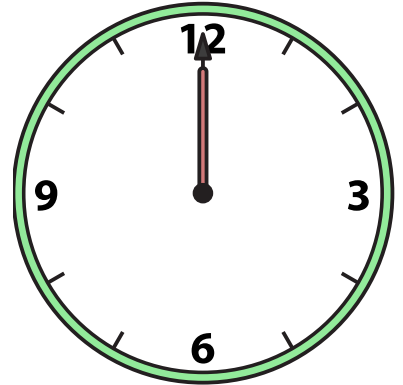
1) 4:30



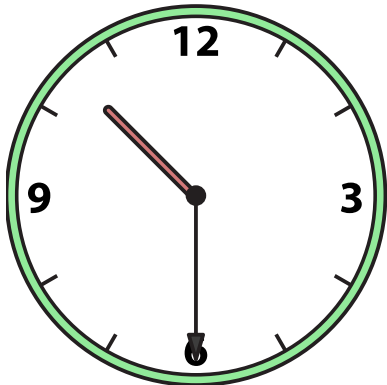
2) 3:00



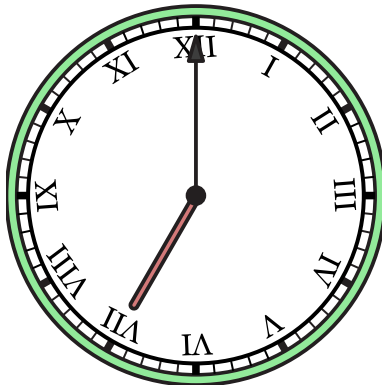
3) 12:00



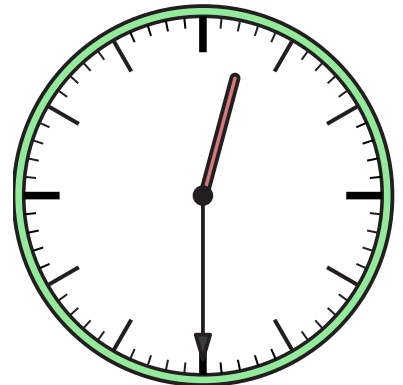
4) 10:30



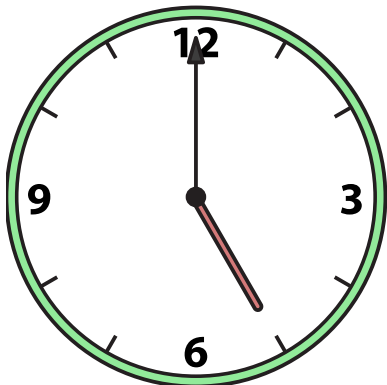
5) 7:00



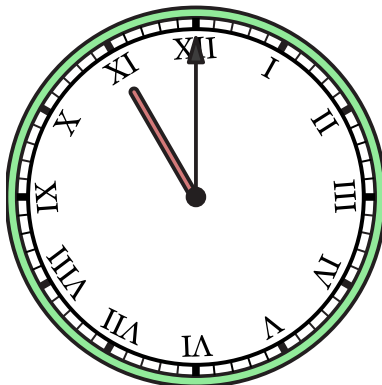
6) 12:30



7) 5:00



8) 11:00



9) 6:30

