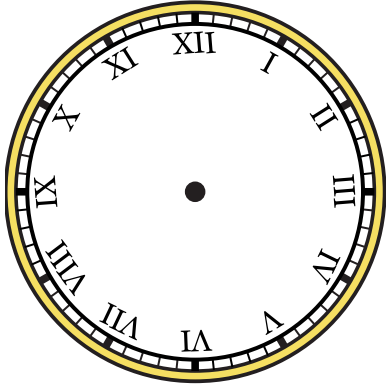


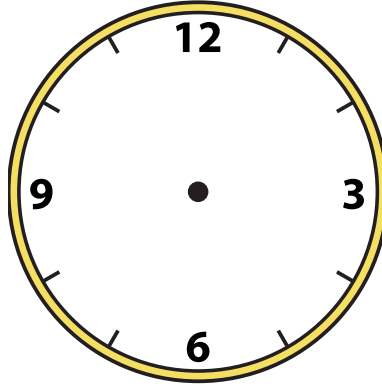


Draw the hour and minute hand on the clocks so they represent the time shown.

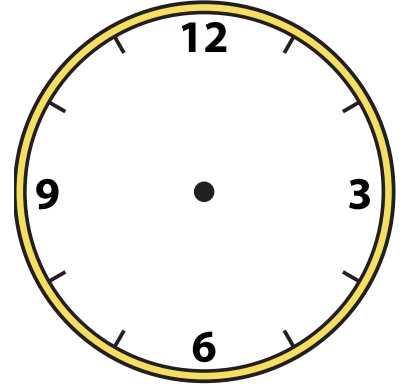
1) 4:00



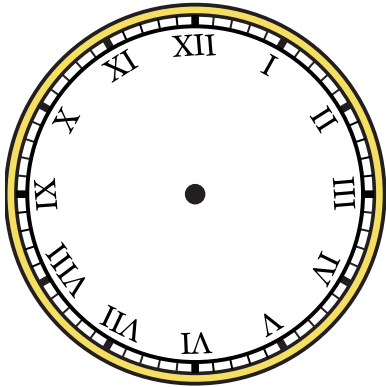
2) 8:45



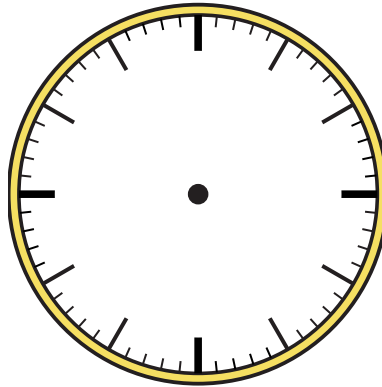
3) 2:30



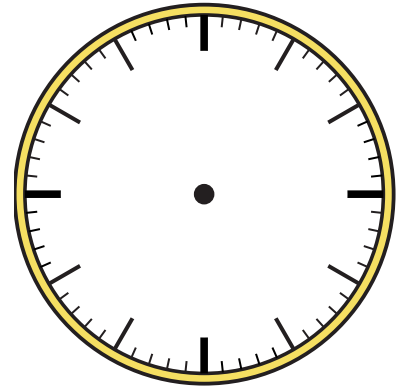
4) 9:45



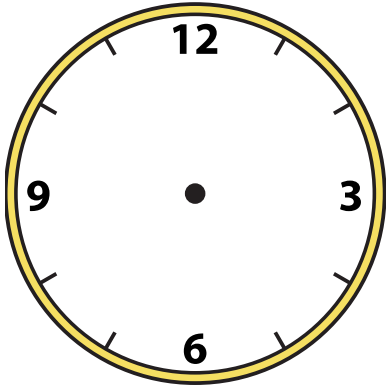
5) 12:30



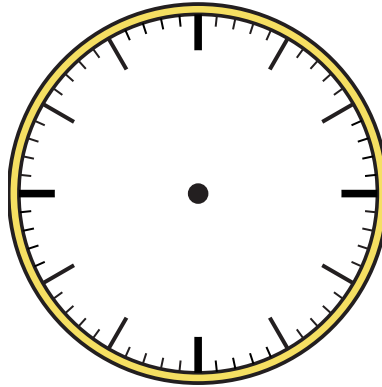
6) 10:45



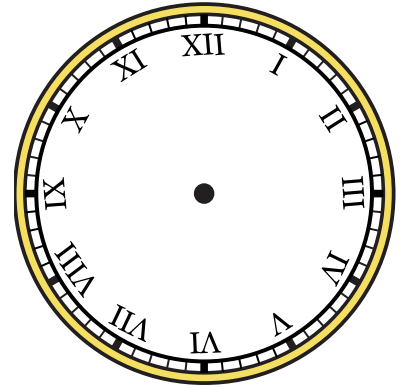
7) 7:15



8) 4:15



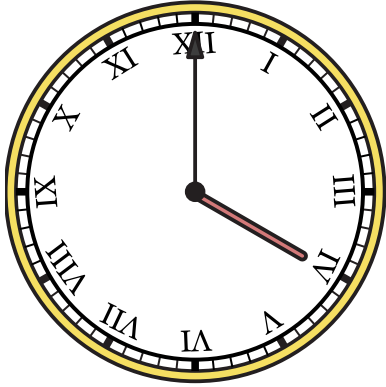
9) 8:15





Draw the hour and minute hand on the clocks so they represent the time shown.

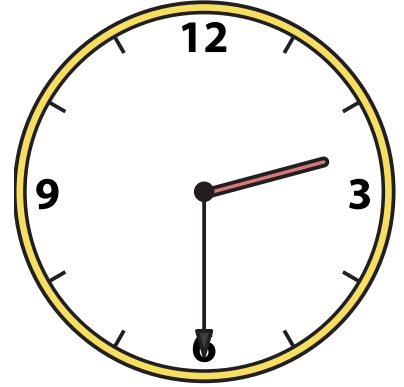
1) 4:00



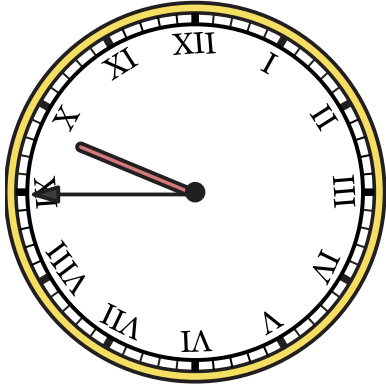
2) 8:45



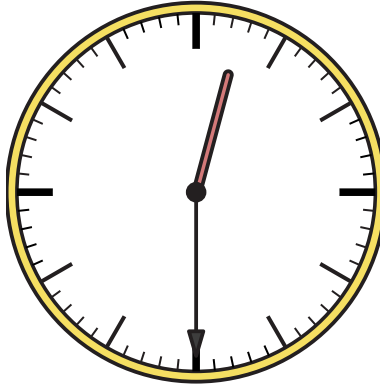
3) 2:30



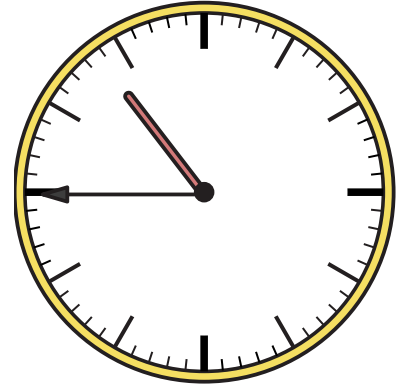
4) 9:45



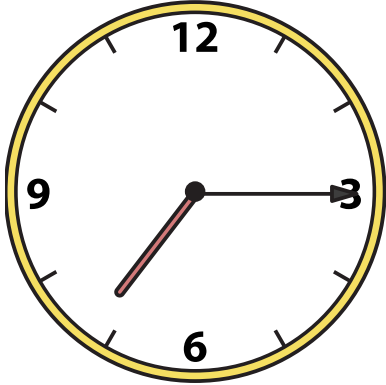
5) 12:30



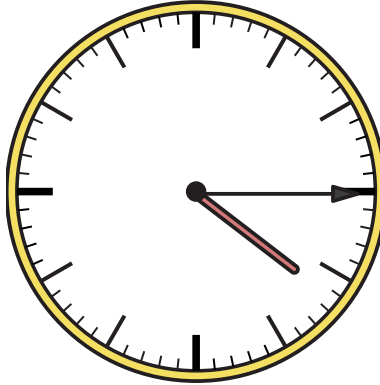
6) 10:45



7) 7:15



8) 4:15



9) 8:15

