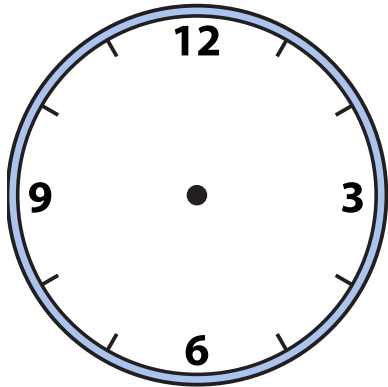




Draw the hour and minute hand on the clocks so they represent the time shown.

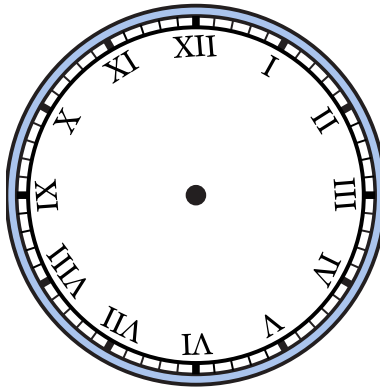
1)

6:05



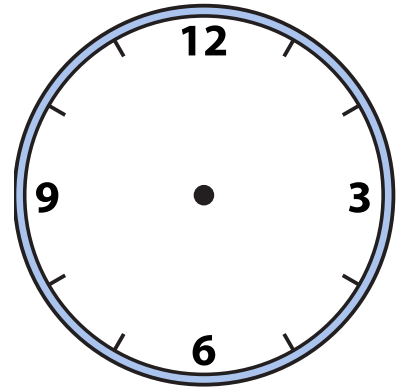
2)

11:30



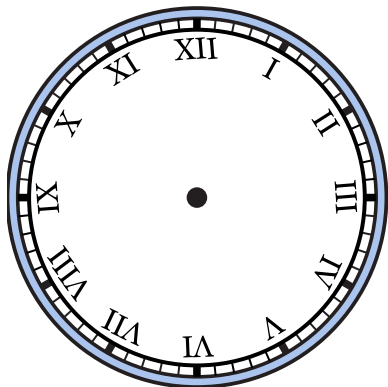
3)

2:35



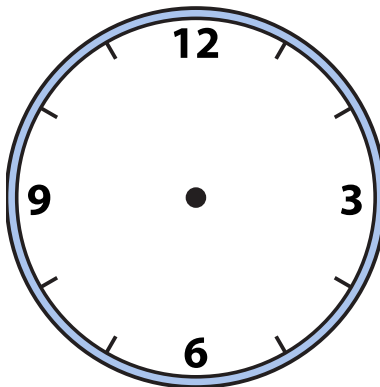
4)

1:00



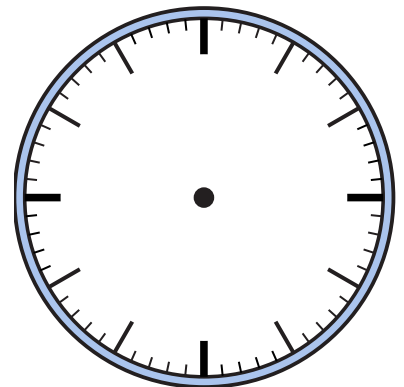
5)

5:55



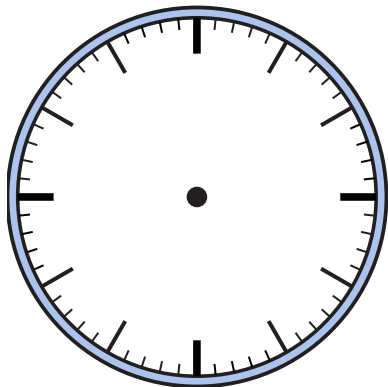
6)

5:00



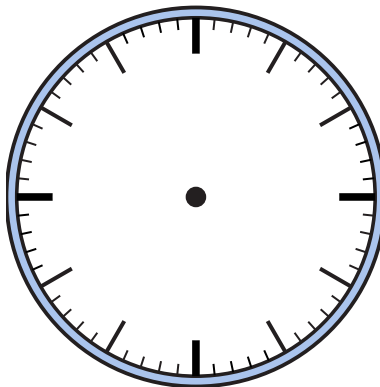
7)

12:45



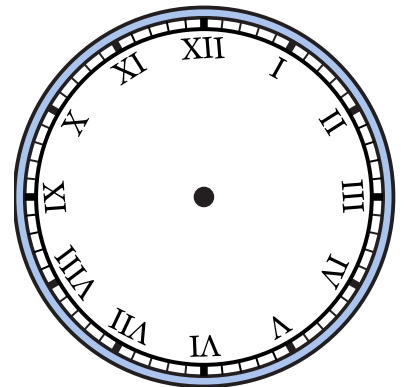
8)

4:45



9)

6:10

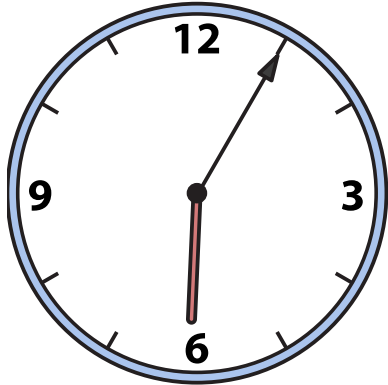




Draw the hour and minute hand on the clocks so they represent the time shown.

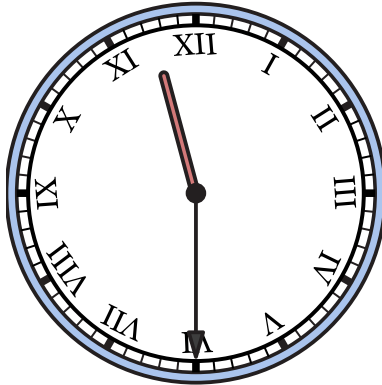
1)

6:05



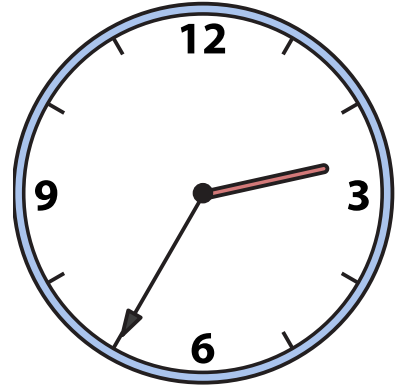
2)

11:30



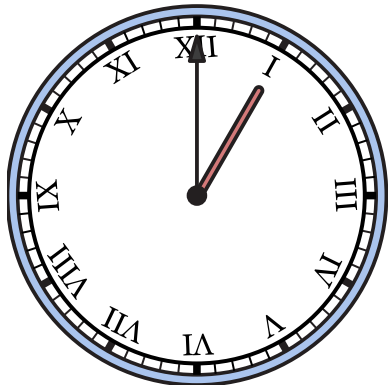
3)

2:35



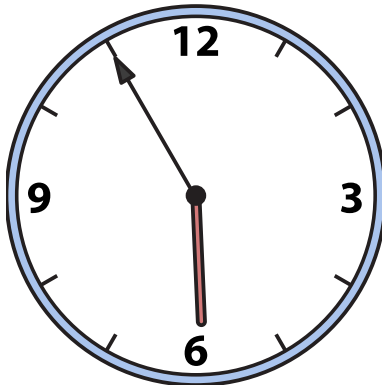
4)

1:00



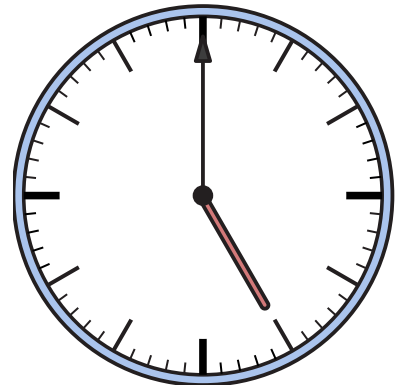
5)

5:55



6)

5:00



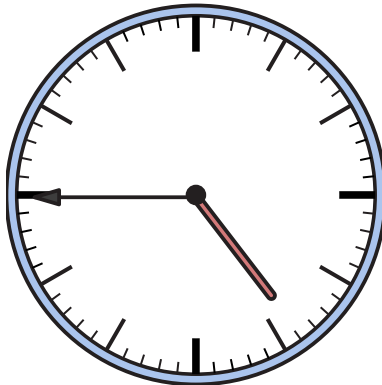
7)

12:45



8)

4:45



9)

6:10

