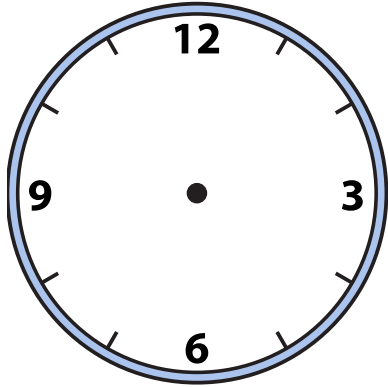




Draw the hour and minute hand on the clocks so they represent the time shown.

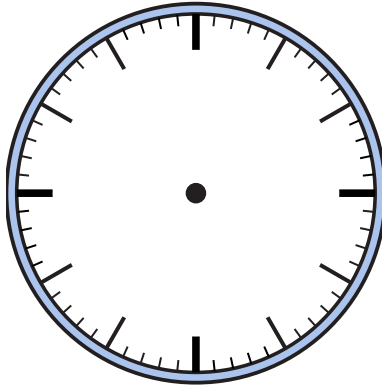
1)

12:55



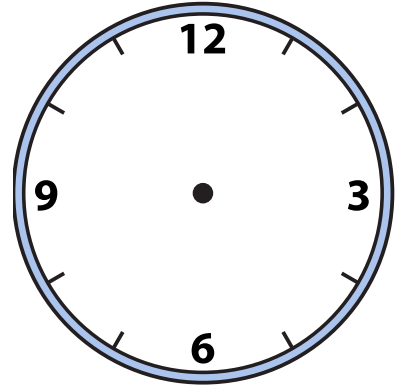
2)

7:50



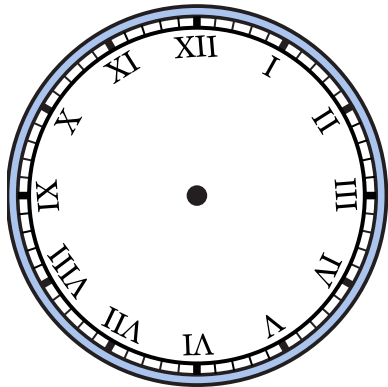
3)

12:05



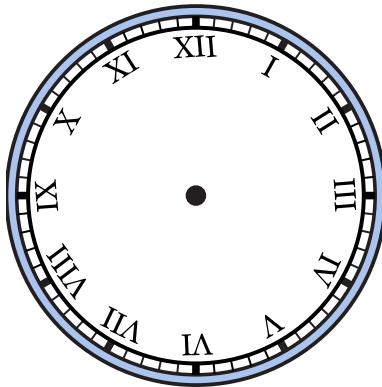
4)

3:15



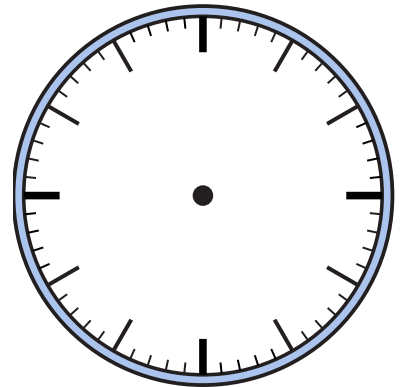
5)

12:35



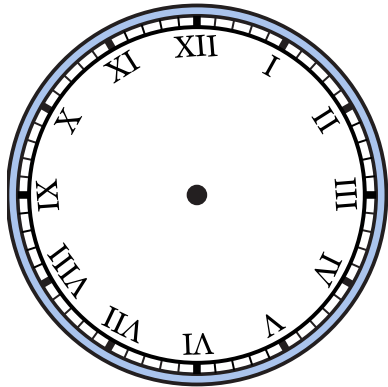
6)

7:35



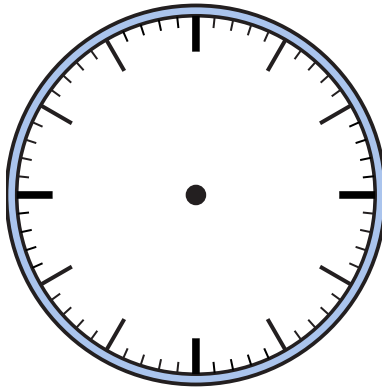
7)

11:00



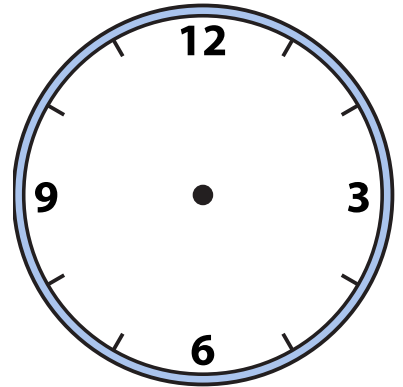
8)

1:20



9)

2:35

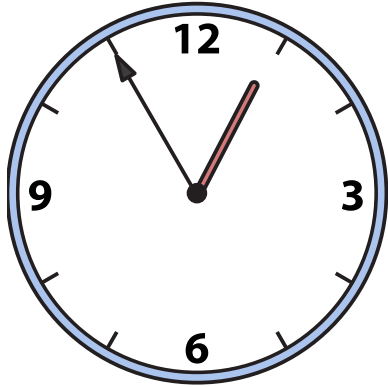




Draw the hour and minute hand on the clocks so they represent the time shown.

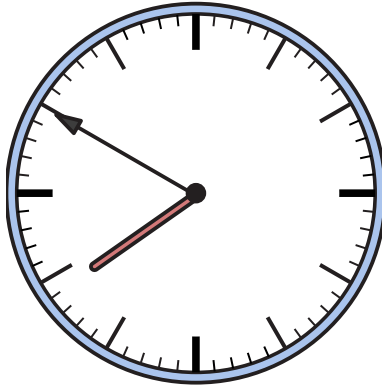
1)

12:55



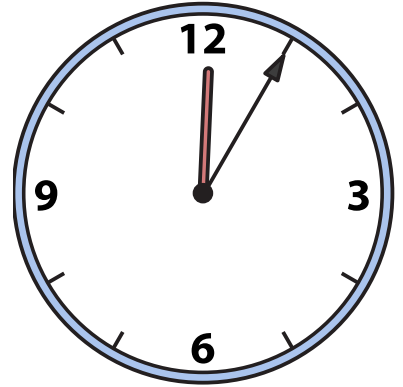
2)

7:50



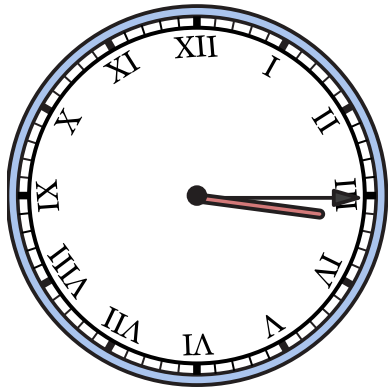
3)

12:05



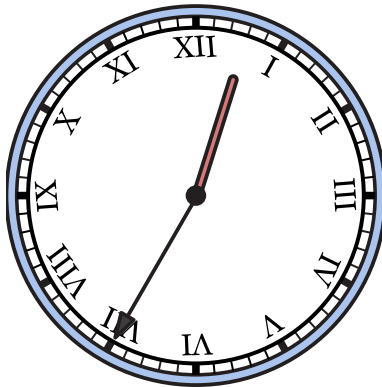
4)

3:15



5)

12:35



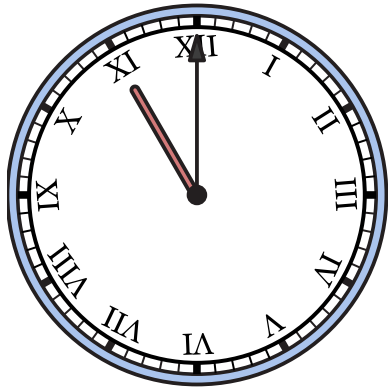
6)

7:35



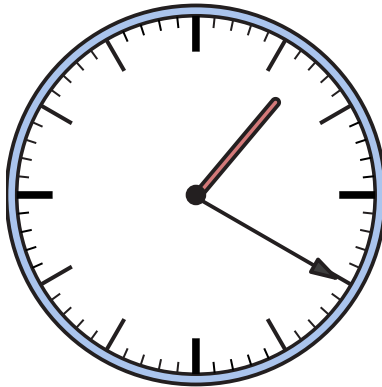
7)

11:00



8)

1:20



9)

2:35

