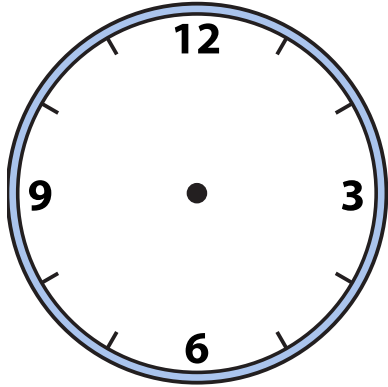


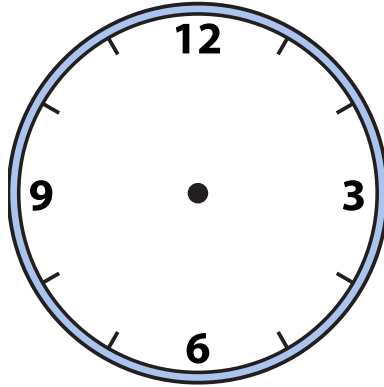


Draw the hour and minute hand on the clocks so they represent the time shown.

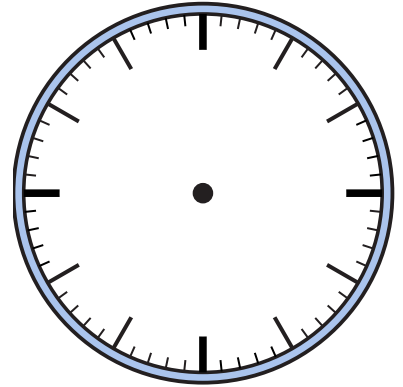
1) 5:20



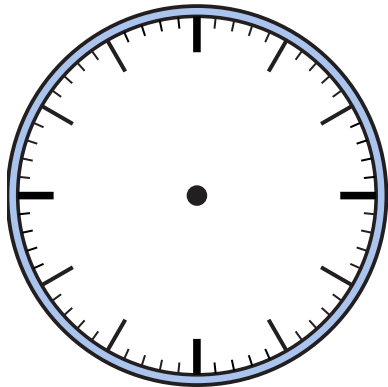
2) 3:15



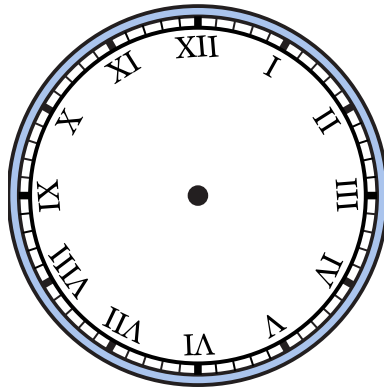
3) 12:10



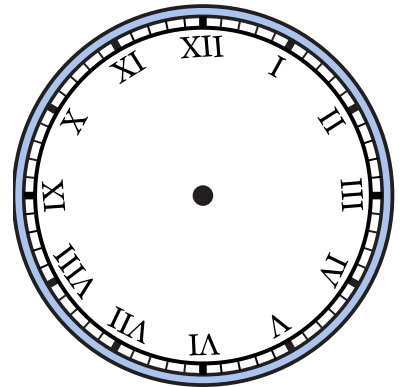
4) 4:00



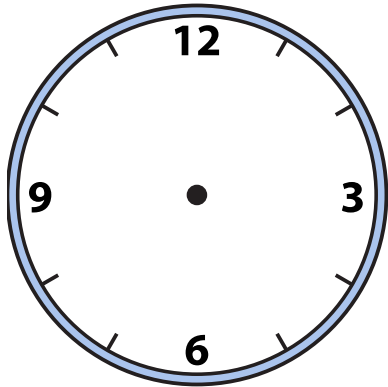
5) 5:05



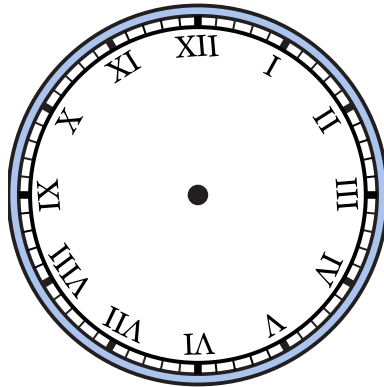
6) 4:15



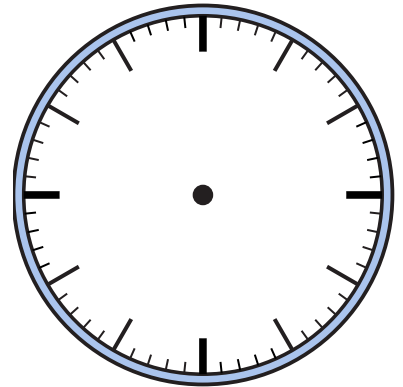
7) 6:10



8) 12:35



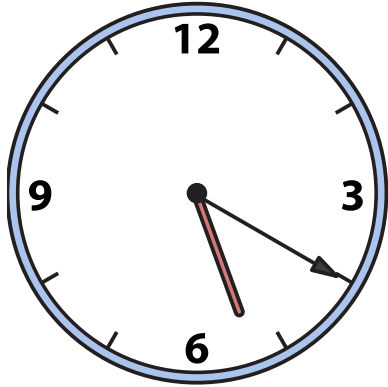
9) 11:25



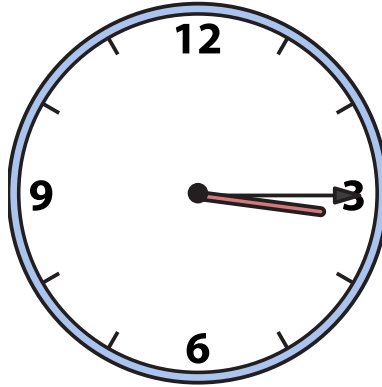


Draw the hour and minute hand on the clocks so they represent the time shown.

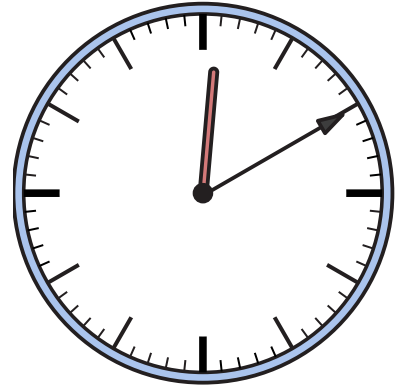
1) 5:20



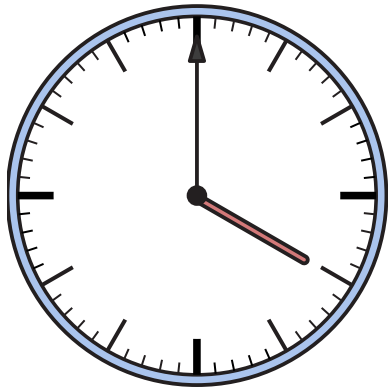
2) 3:15



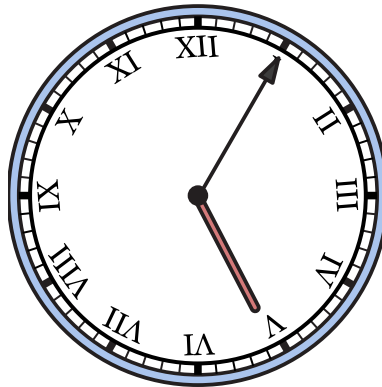
3) 12:10



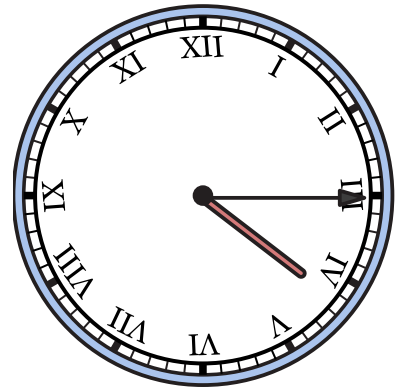
4) 4:00



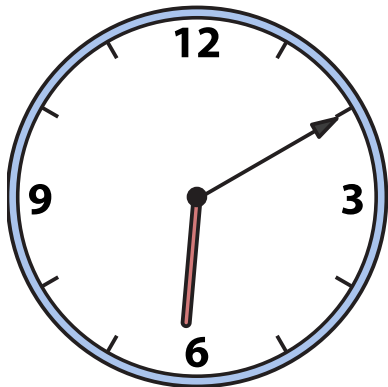
5) 5:05



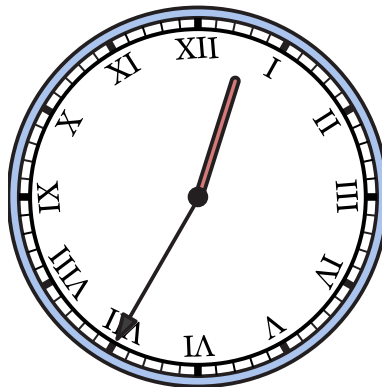
6) 4:15



7) 6:10



8) 12:35



9) 11:25

