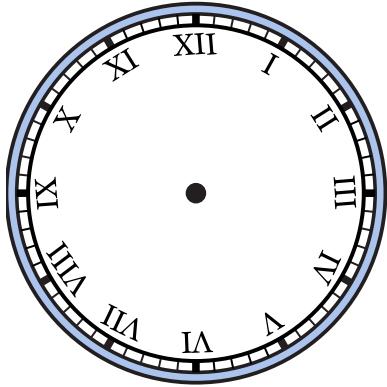




Draw the hour and minute hand on the clocks so they represent the time shown.

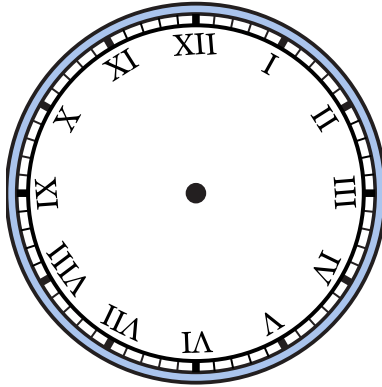
1)

7:45



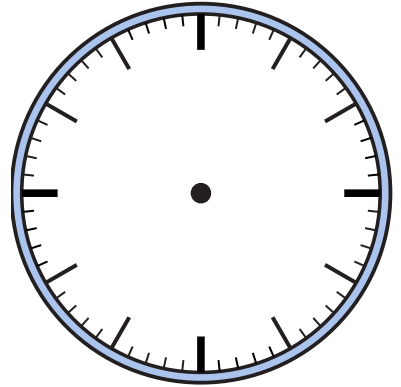
2)

3:35



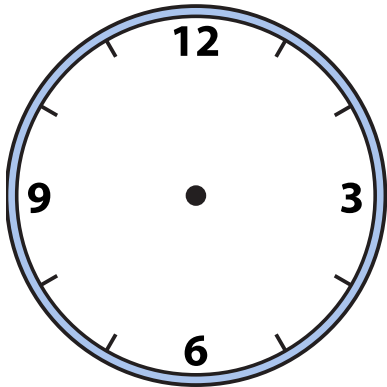
3)

2:00



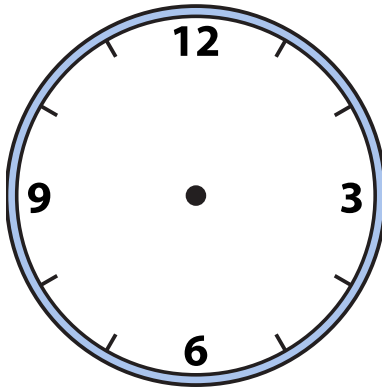
4)

9:55



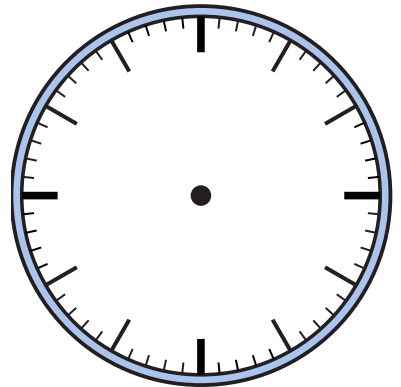
5)

7:55



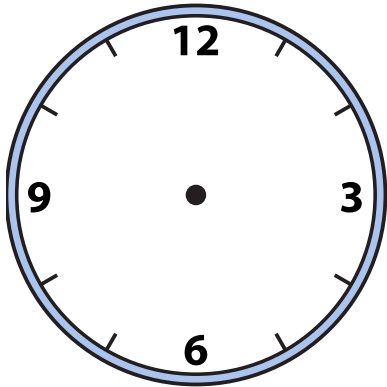
6)

7:15



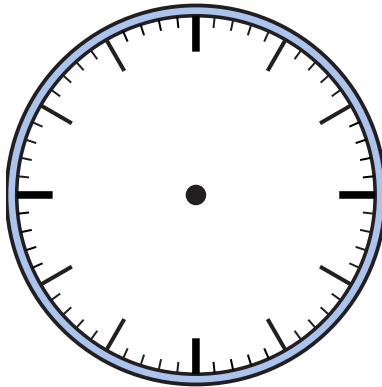
7)

12:20



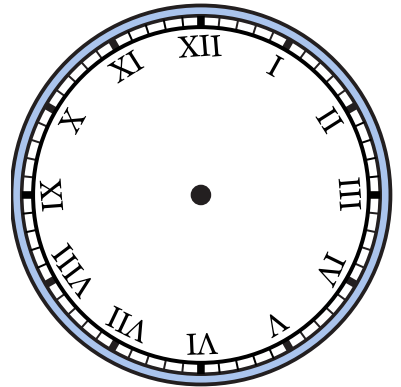
8)

11:00



9)

2:35

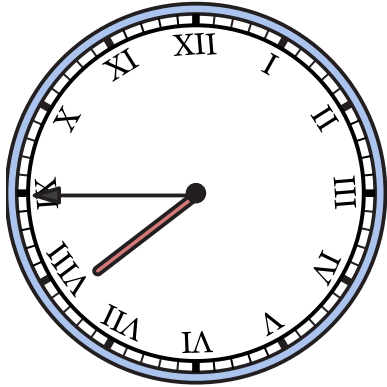




Draw the hour and minute hand on the clocks so they represent the time shown.

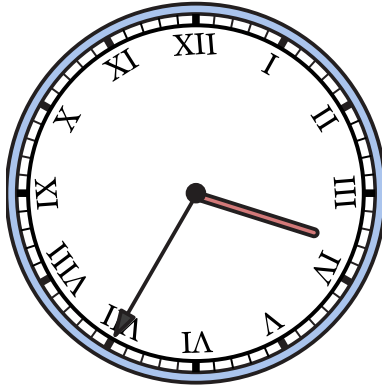
1)

7:45



2)

3:35



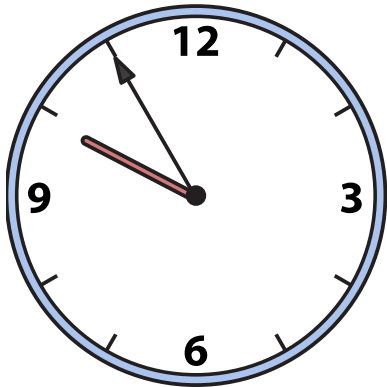
3)

2:00



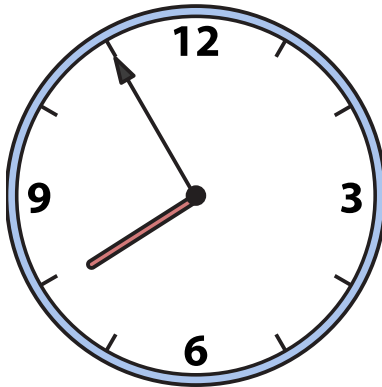
4)

9:55



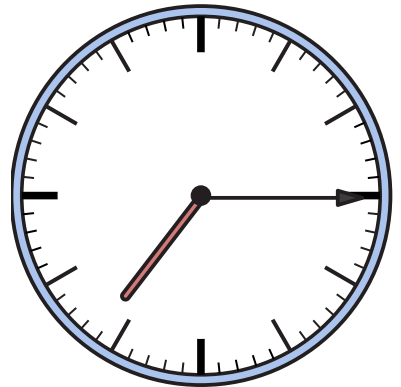
5)

7:55



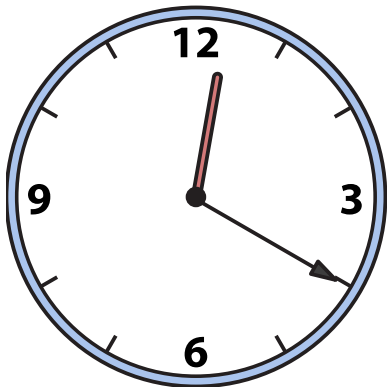
6)

7:15



7)

12:20



8)

11:00



9)

2:35

