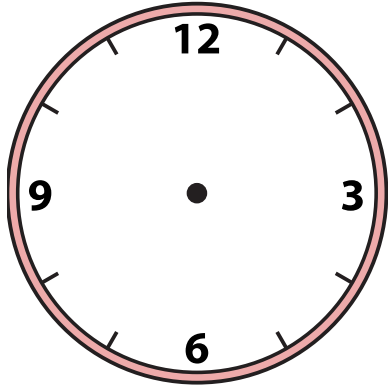


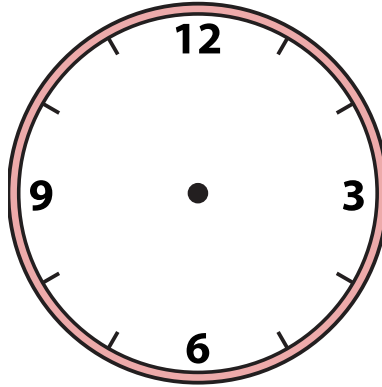


Draw the hour and minute hand on the clocks so they represent the time shown.

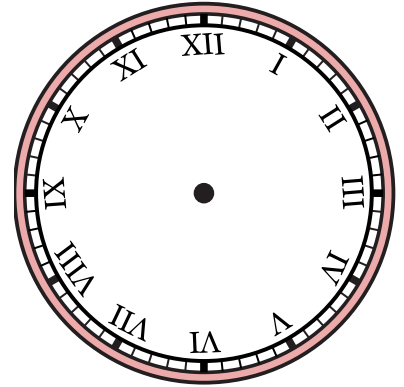
1) 11:40



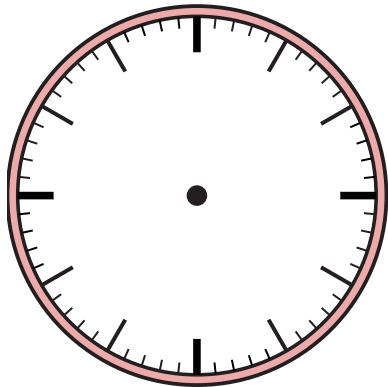
2) 6:22



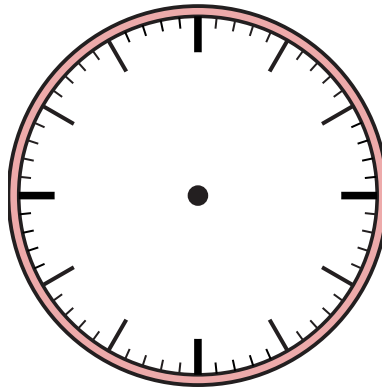
3) 9:35



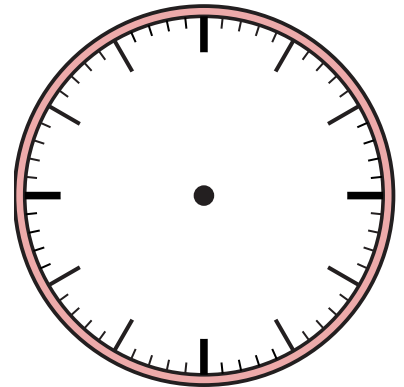
4) 8:01



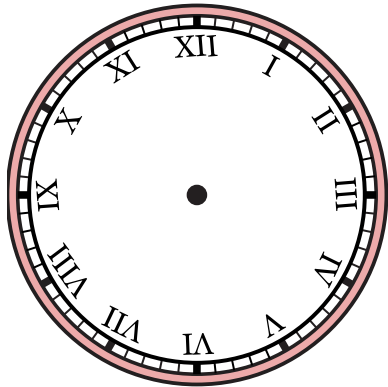
5) 4:44



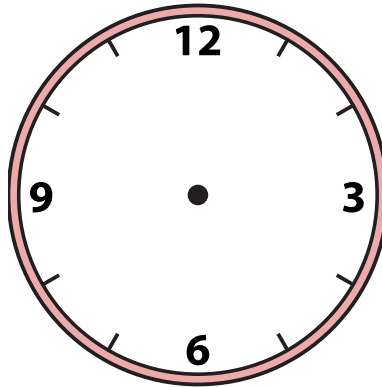
6) 12:53



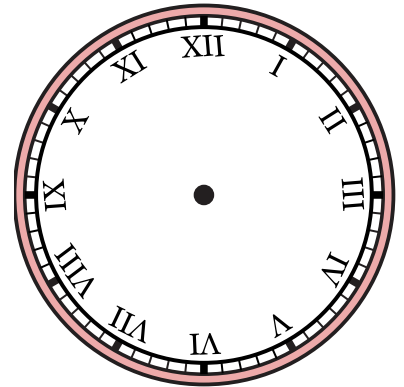
7) 5:28



8) 12:04



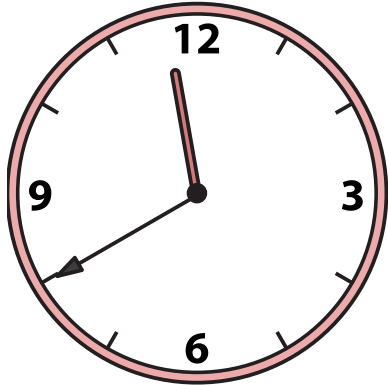
9) 2:38



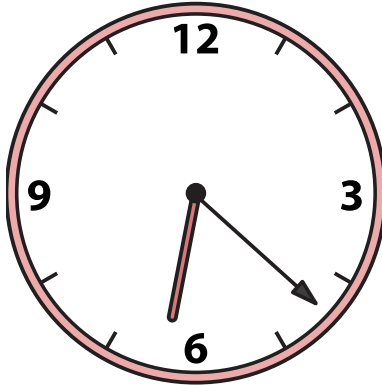


Draw the hour and minute hand on the clocks so they represent the time shown.

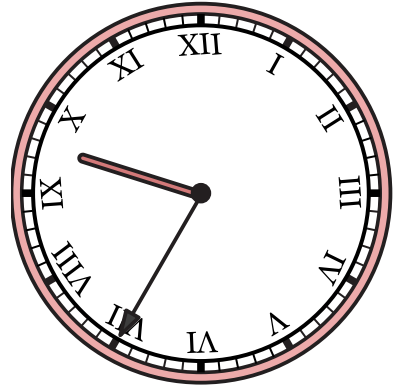
1) 11:40



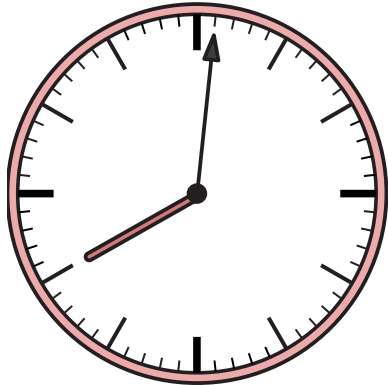
2) 6:22



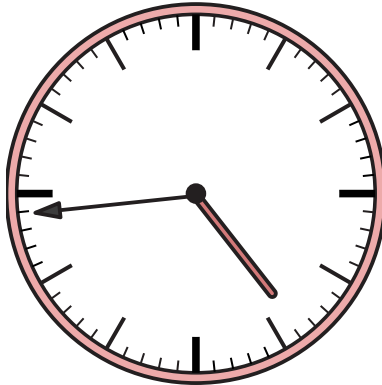
3) 9:35



4) 8:01



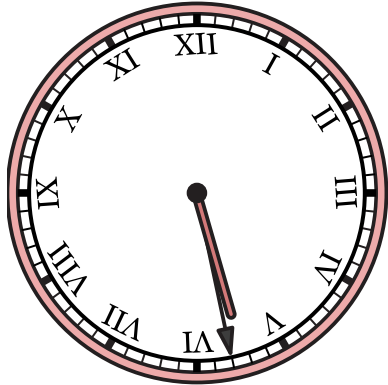
5) 4:44



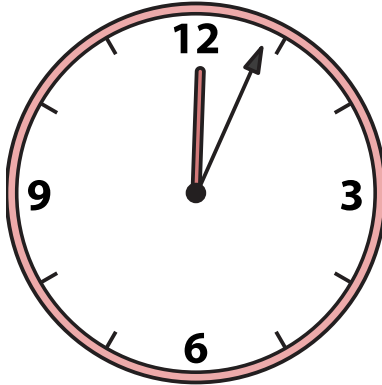
6) 12:53



7) 5:28



8) 12:04



9) 2:38

