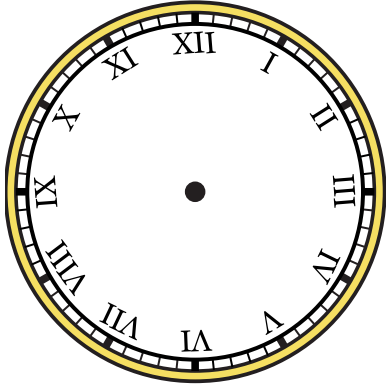


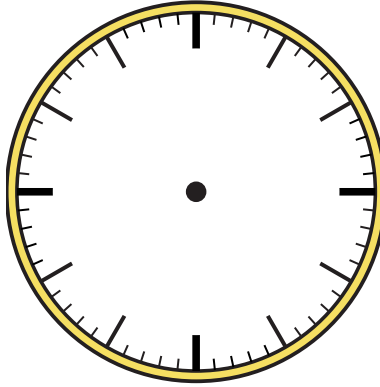


Draw the hour and minute hand on the clocks so they represent the time shown.

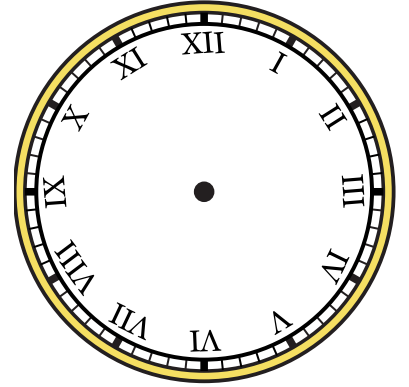
1) 2:00



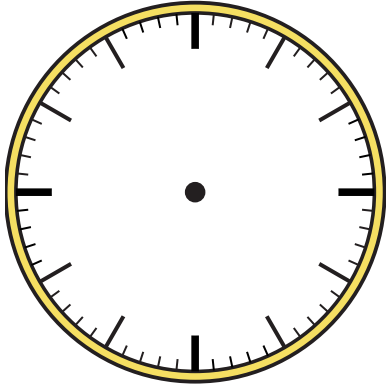
2) 4:15



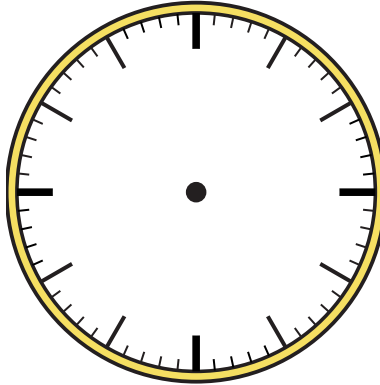
3) 4:30



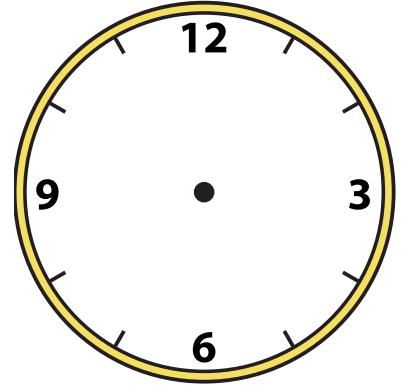
4) 12:00



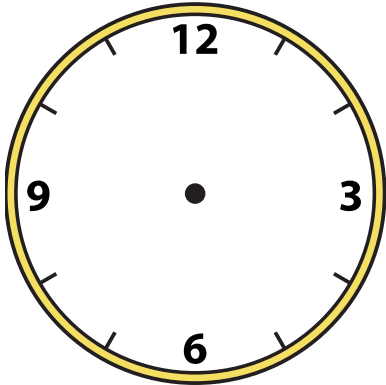
5) 2:45



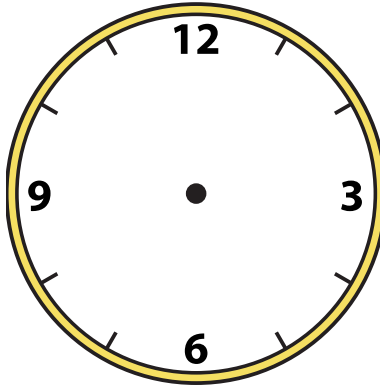
6) 8:45



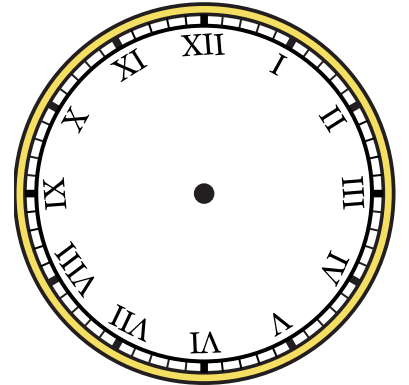
7) 10:30



8) 3:30



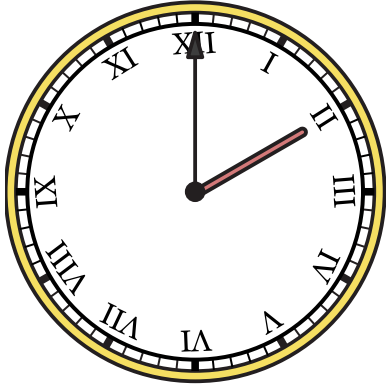
9) 1:45



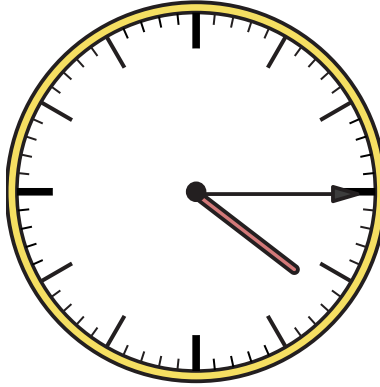


Draw the hour and minute hand on the clocks so they represent the time shown.

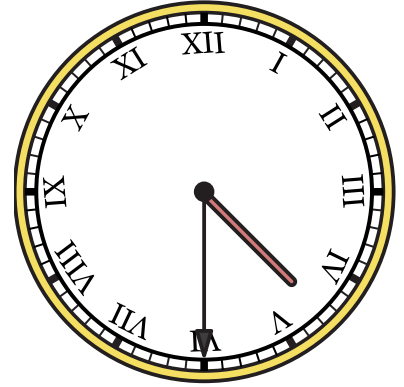
1) 2:00



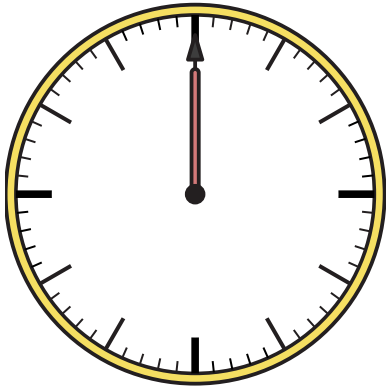
2) 4:15



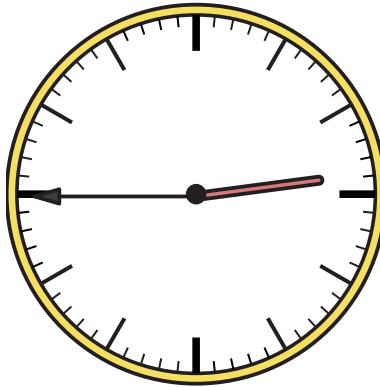
3) 4:30



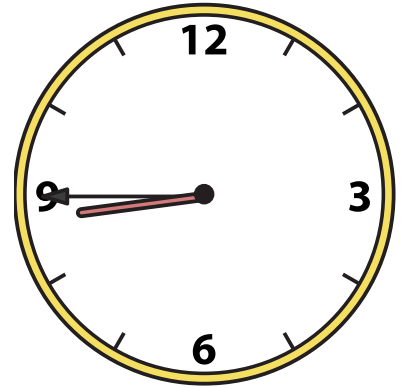
4) 12:00



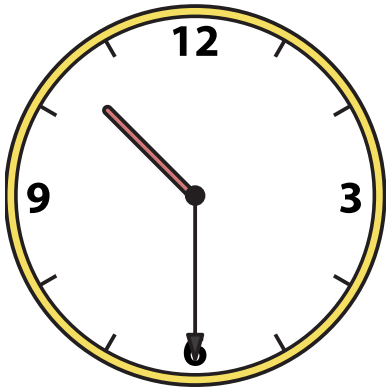
5) 2:45



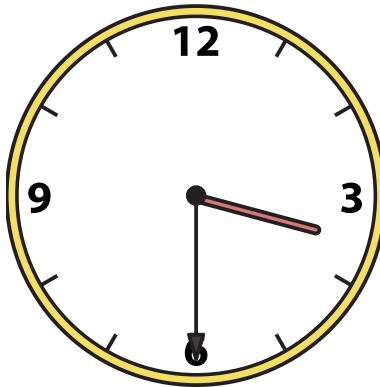
6) 8:45



7) 10:30



8) 3:30



9) 1:45

