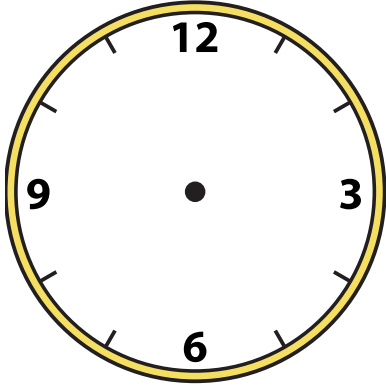


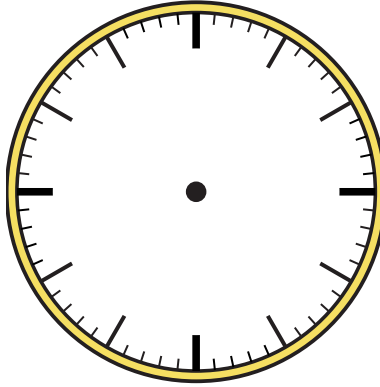


Draw the hour and minute hand on the clocks so they represent the time shown.

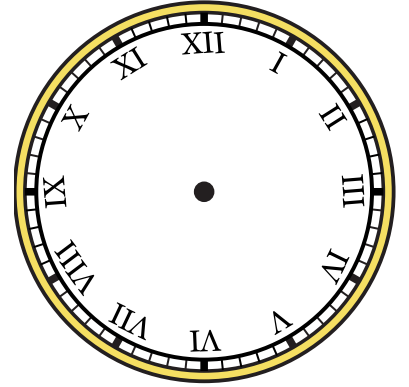
1) 6:00



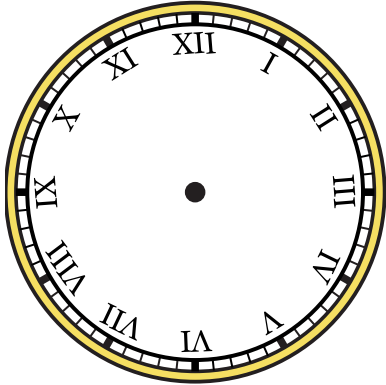
2) 9:15



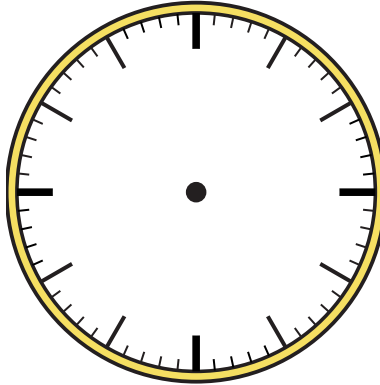
3) 1:00



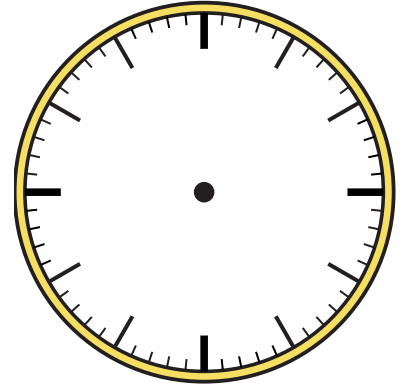
4) 5:00



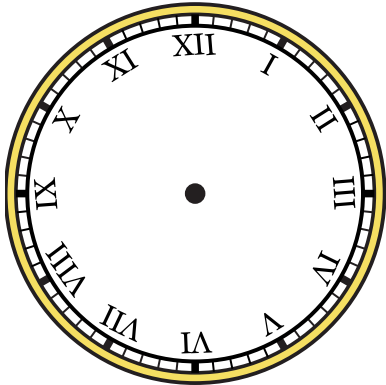
5) 1:30



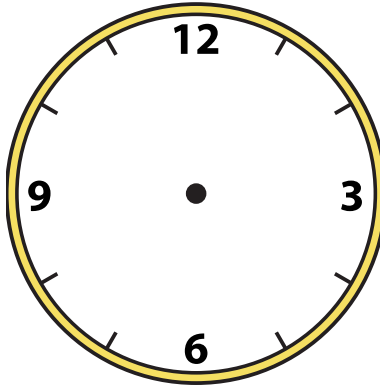
6) 12:30



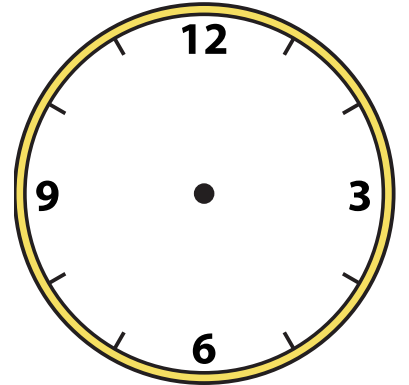
7) 11:45



8) 6:15



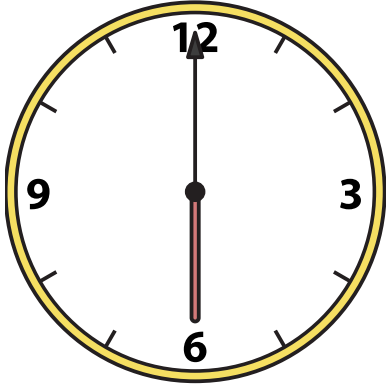
9) 1:45





Draw the hour and minute hand on the clocks so they represent the time shown.

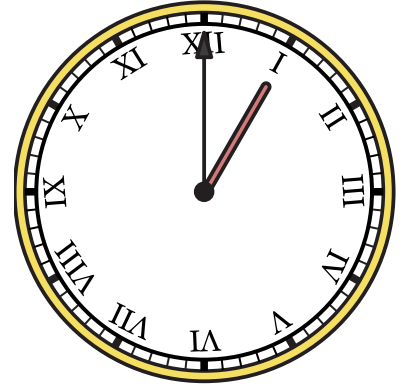
1) 6:00



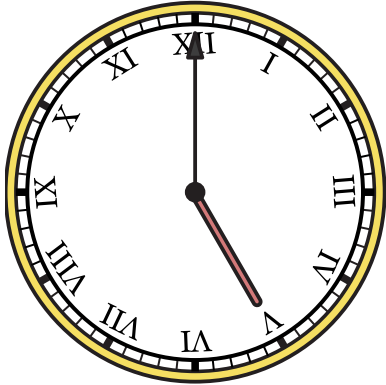
2) 9:15



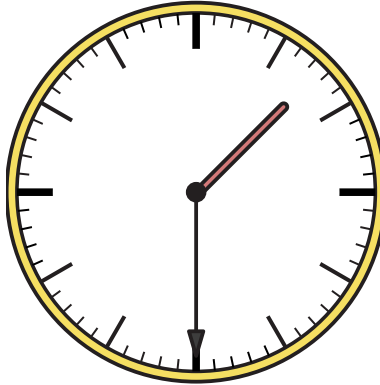
3) 1:00



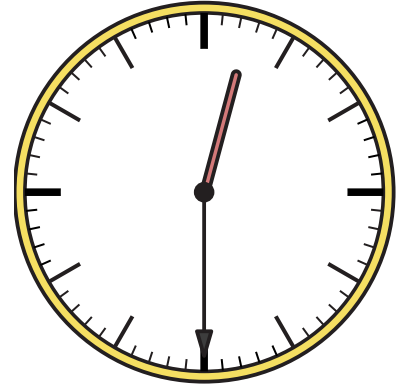
4) 5:00



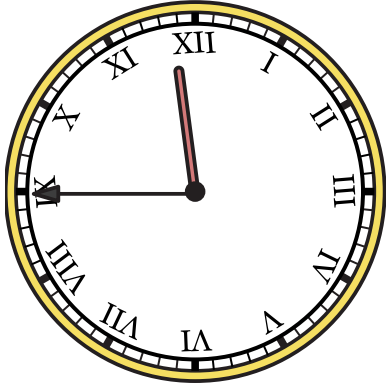
5) 1:30



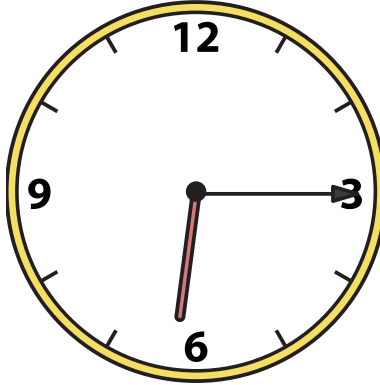
6) 12:30



7) 11:45



8) 6:15



9) 1:45

