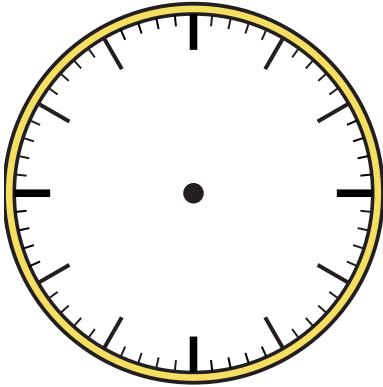




Draw the hour and minute hand on the clock so it represents the time shown.

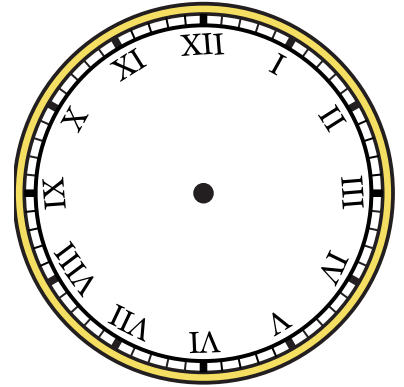
1) 6:45



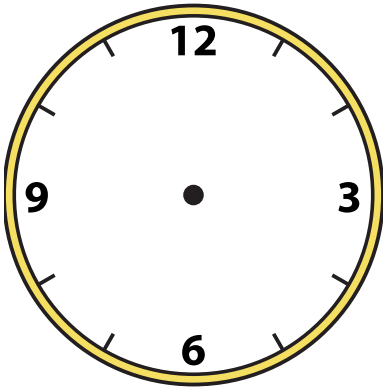
2) 12:55



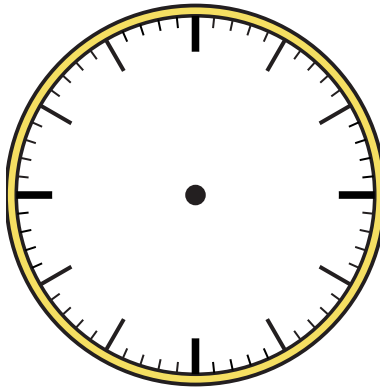
3) 9:30



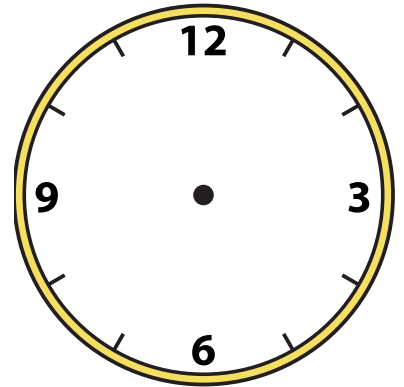
4) 5:15



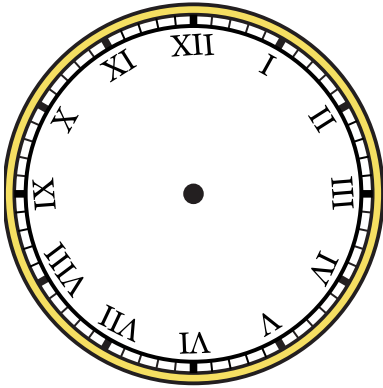
5) 1:10



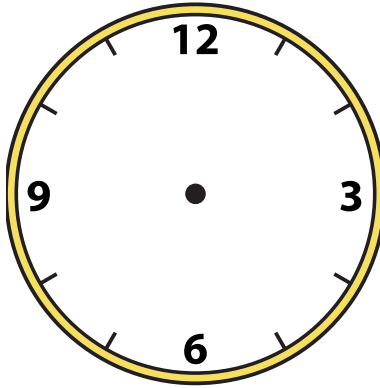
6) 10:50



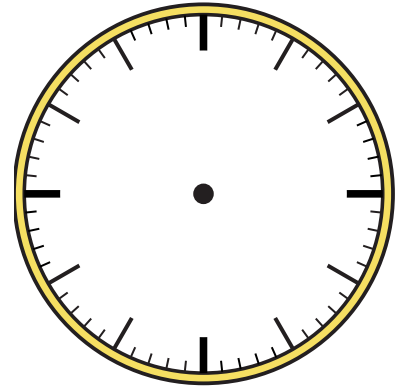
7) 1:40



8) 2:15



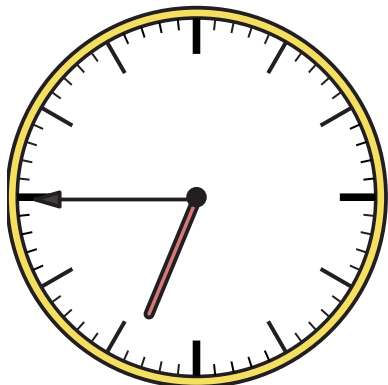
9) 12:05



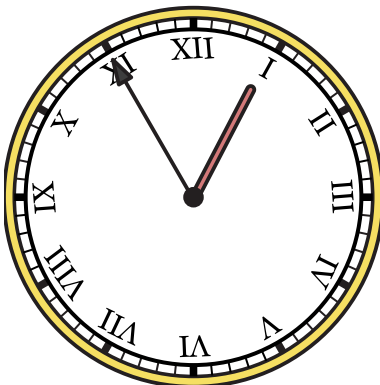


Draw the hour and minute hand on the clock so it represents the time shown.

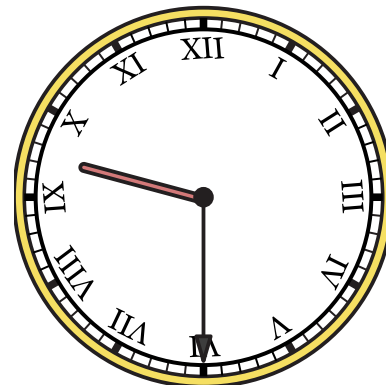
1) 6:45



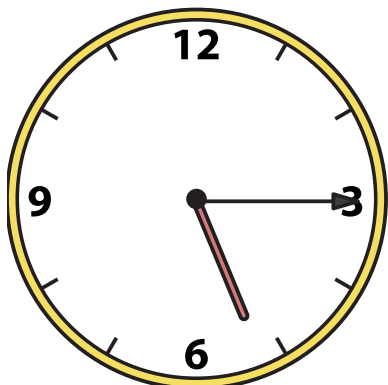
2) 12:55



3) 9:30



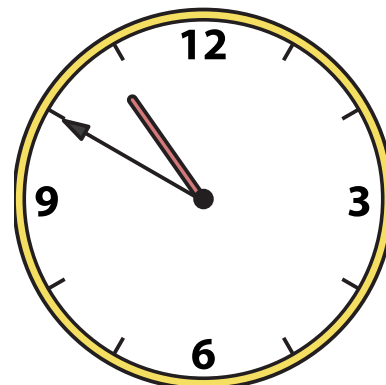
4) 5:15



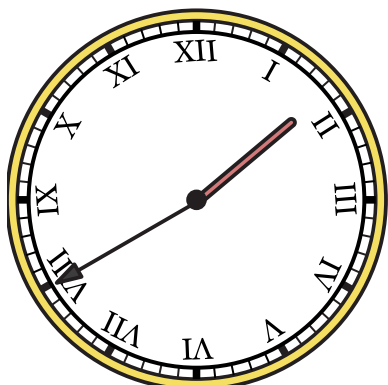
5) 1:10



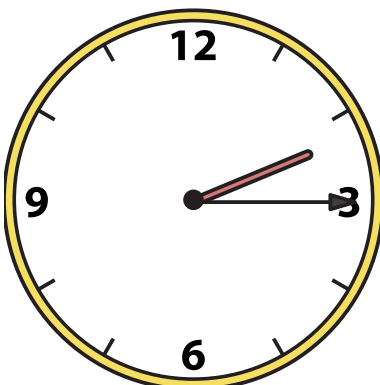
6) 10:50



7) 1:40



8) 2:15



9) 12:05

