



Draw the hour and minute hand on the clock so it represents the time shown.

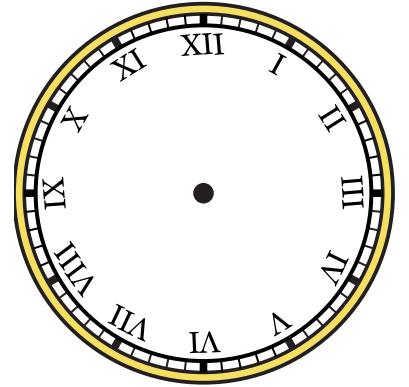
1) 1:35



2) 8:20



3) 1:10



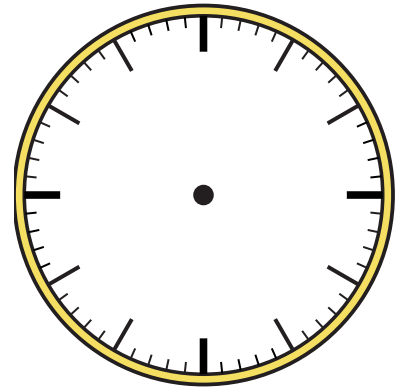
4) 12:40



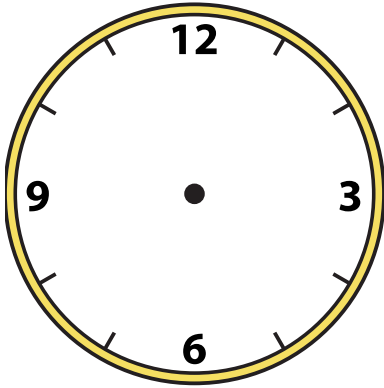
5) 4:15



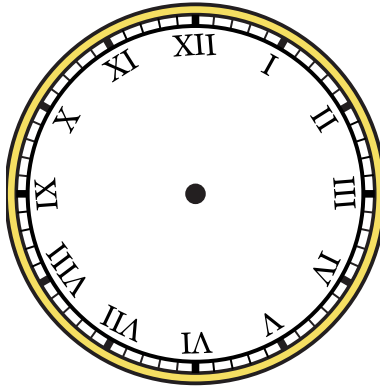
6) 10:15



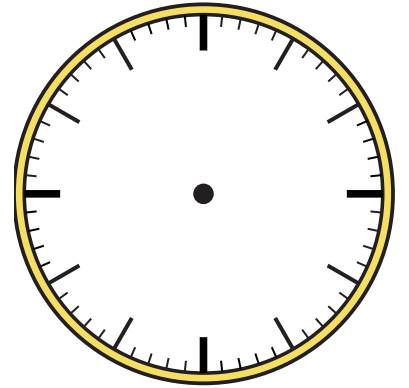
7) 6:55



8) 2:55



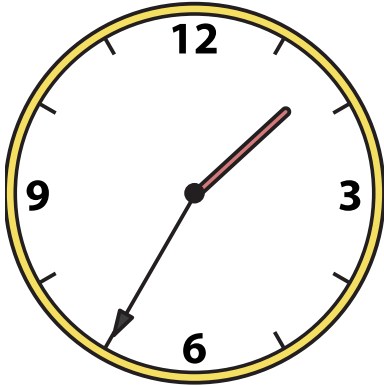
9) 4:25



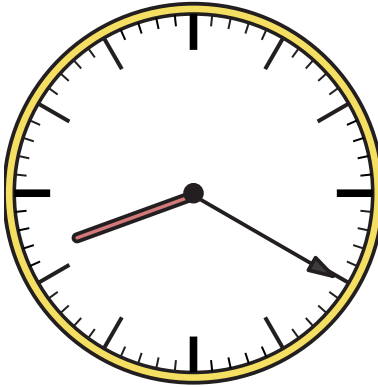


Draw the hour and minute hand on the clock so it represents the time shown.

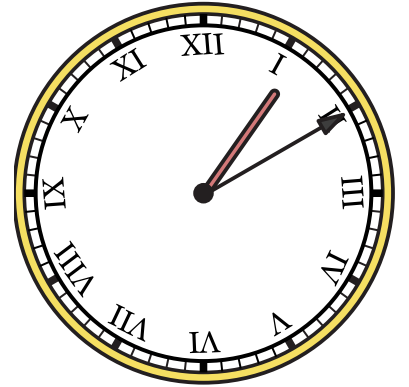
1) 1:35



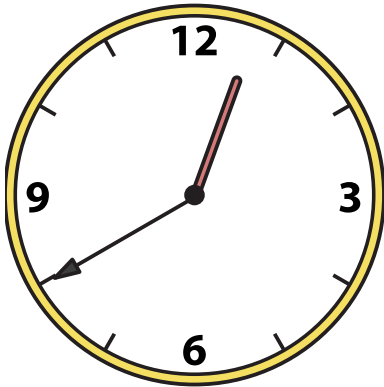
2) 8:20



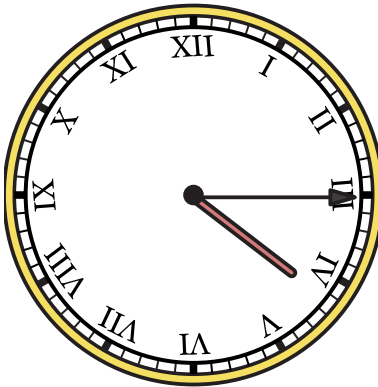
3) 1:10



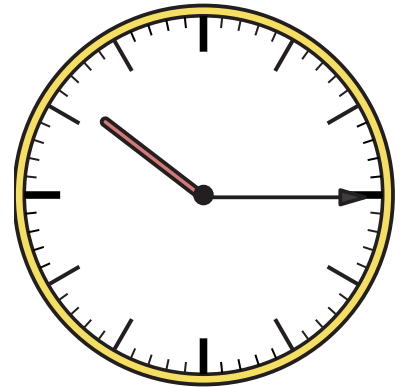
4) 12:40



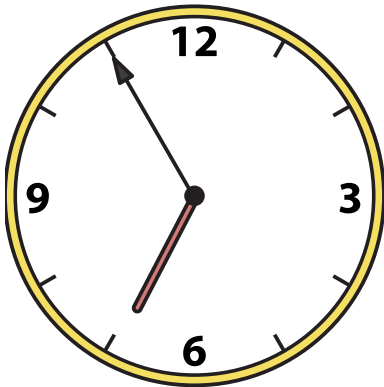
5) 4:15



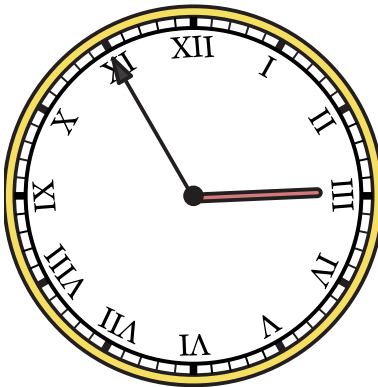
6) 10:15



7) 6:55



8) 2:55



9) 4:25

