



Draw the hour and minute hand on the clock so it represents the time shown.

1) 12:14



2) 9:35



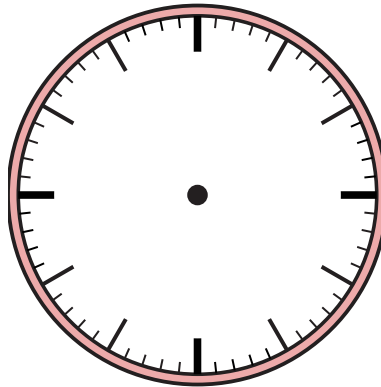
3) 8:53



4) 2:53



5) 10:59



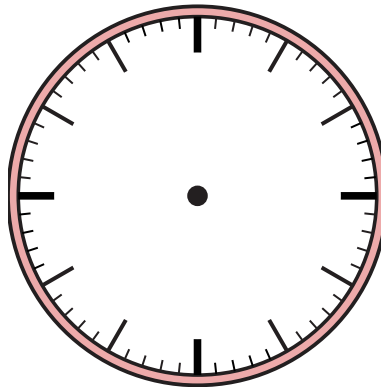
6) 4:43



7) 5:53



8) 11:39



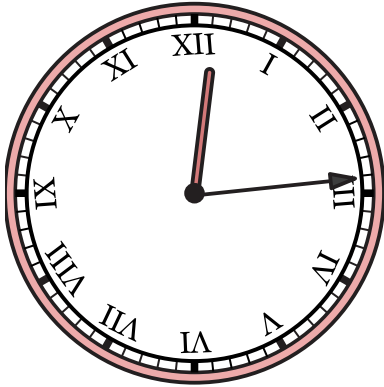
9) 9:46



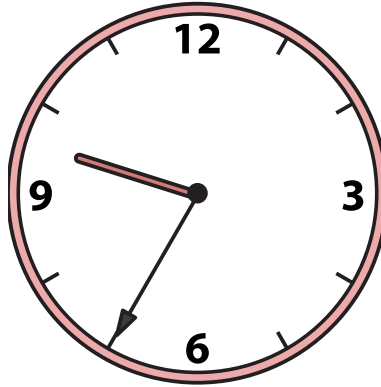


Draw the hour and minute hand on the clock so it represents the time shown.

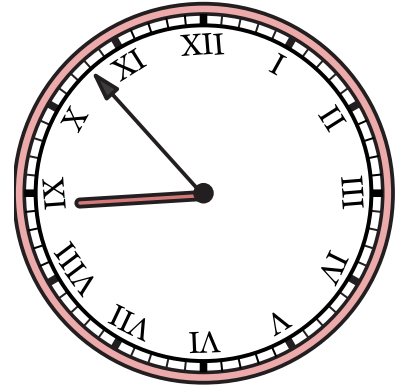
1) 12:14



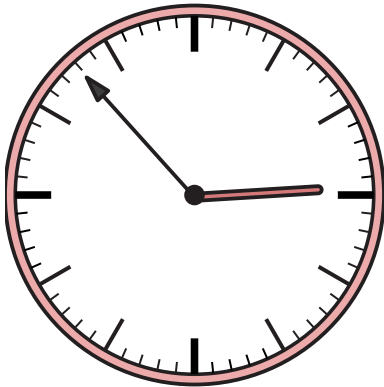
2) 9:35



3) 8:53



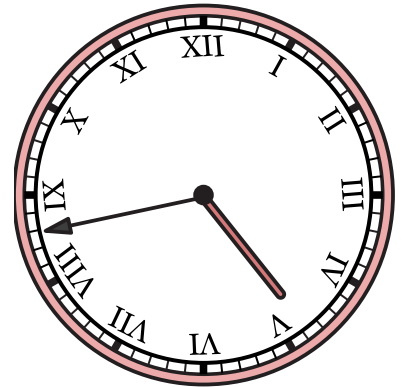
4) 2:53



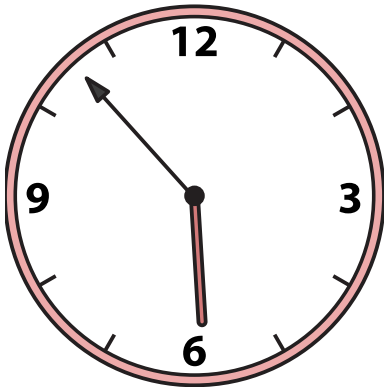
5) 10:59



6) 4:43



7) 5:53



8) 11:39



9) 9:46

