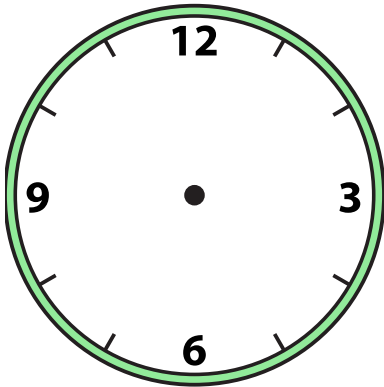


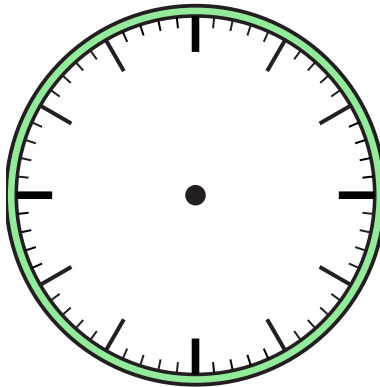


Draw the hour and minute hand on the clock so it represents the time shown.

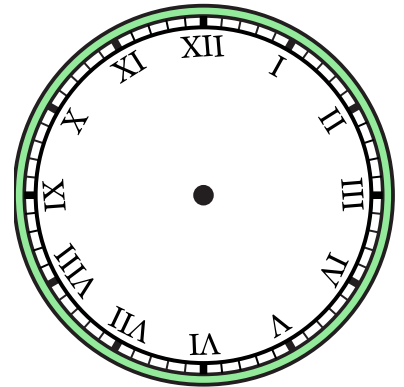
1) 5:00



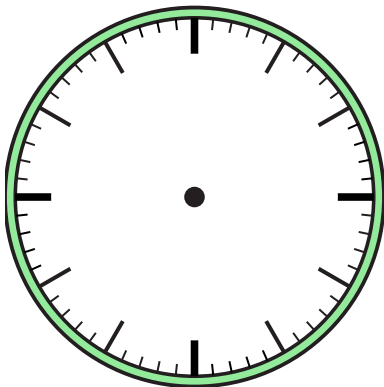
2) 12:00



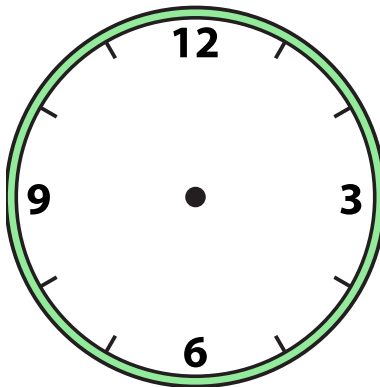
3) 1:00



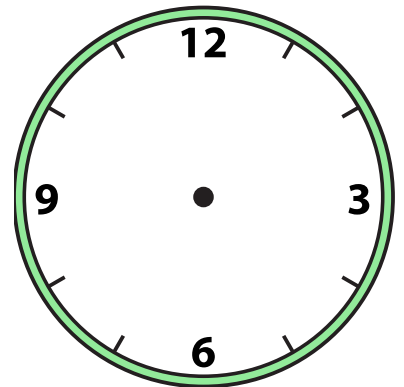
4) 4:00



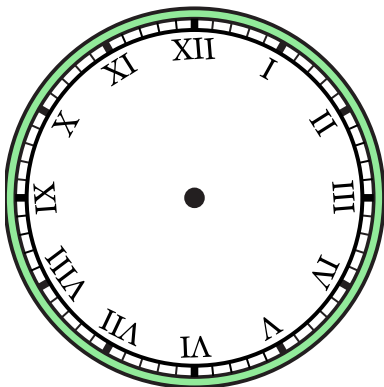
5) 3:00



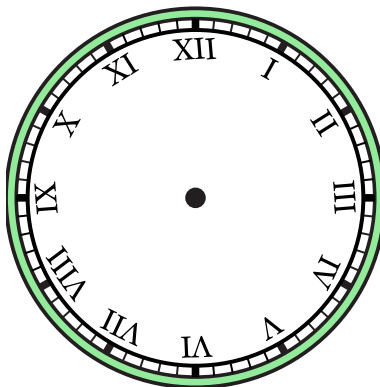
6) 6:00



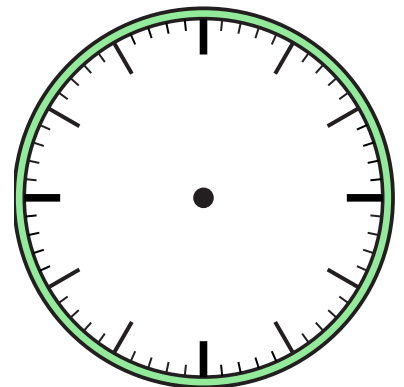
7) 2:30



8) 3:30



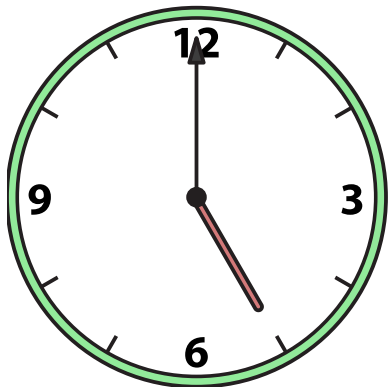
9) 2:00



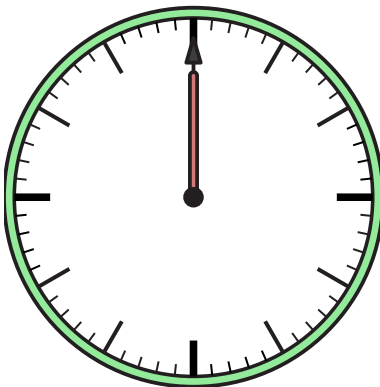


Draw the hour and minute hand on the clock so it represents the time shown.

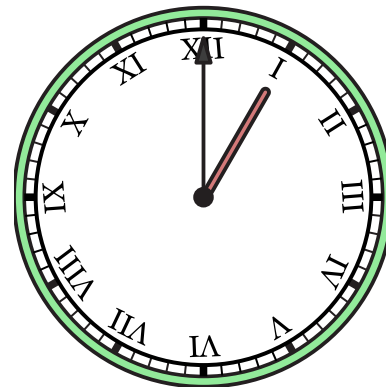
1) 5:00



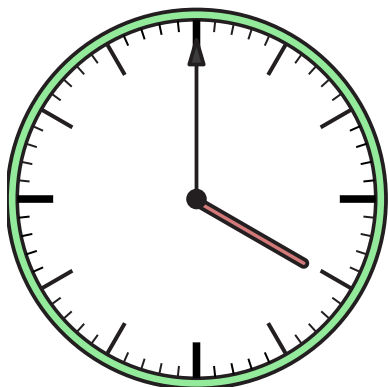
2) 12:00



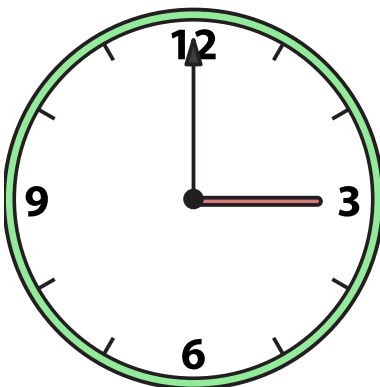
3) 1:00



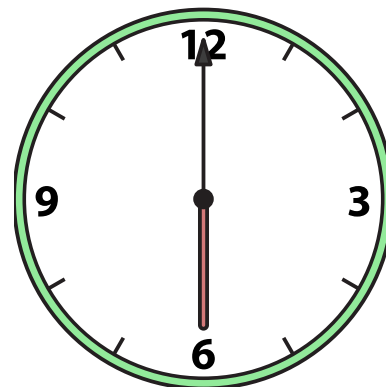
4) 4:00



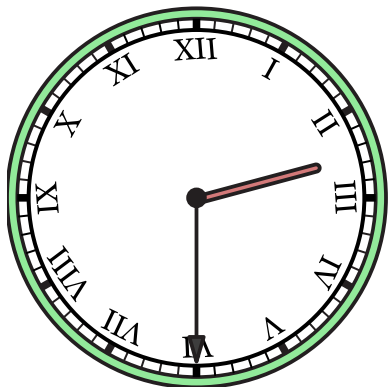
5) 3:00



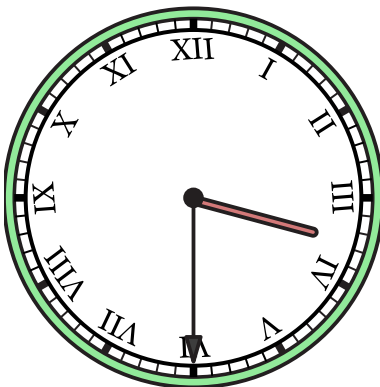
6) 6:00



7) 2:30



8) 3:30



9) 2:00

