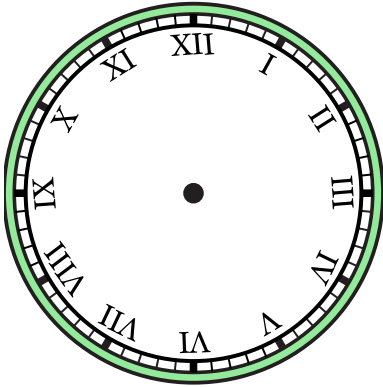


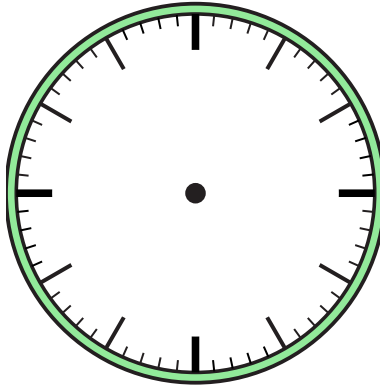


Draw the hour and minute hand on the clock so it represents the time shown.

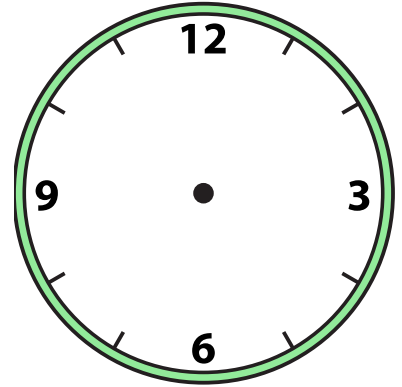
1) 9:00



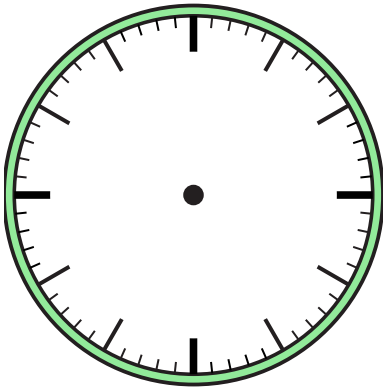
2) 6:00



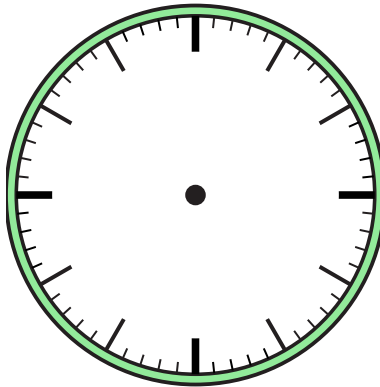
3) 5:30



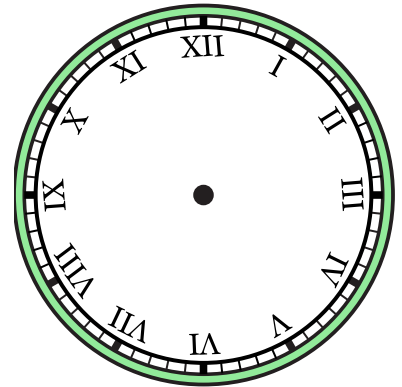
4) 3:30



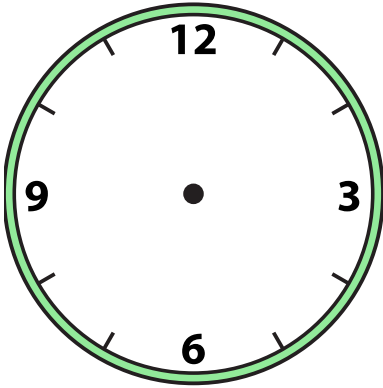
5) 1:00



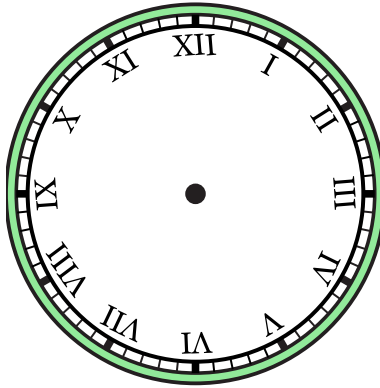
6) 2:00



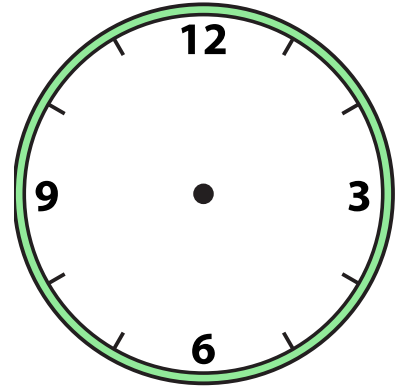
7) 12:00



8) 11:00



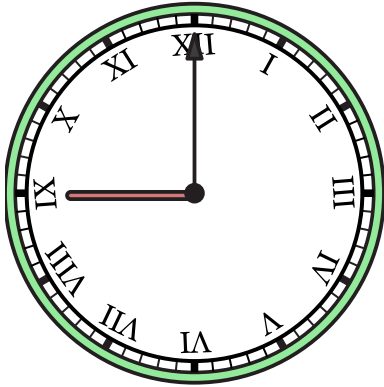
9) 11:30



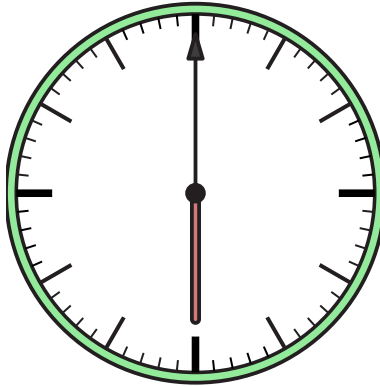


Draw the hour and minute hand on the clock so it represents the time shown.

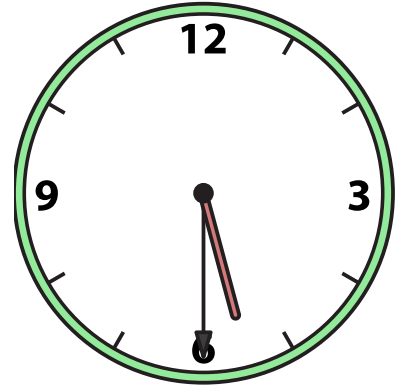
1) 9:00



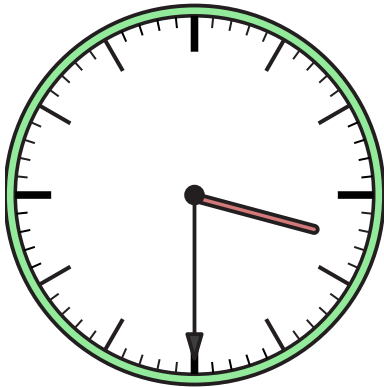
2) 6:00



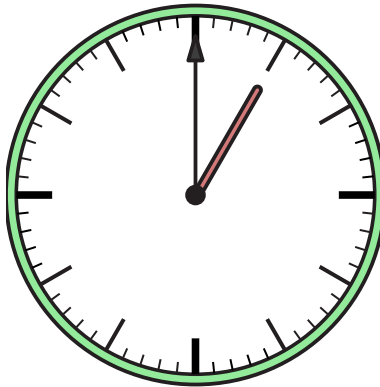
3) 5:30



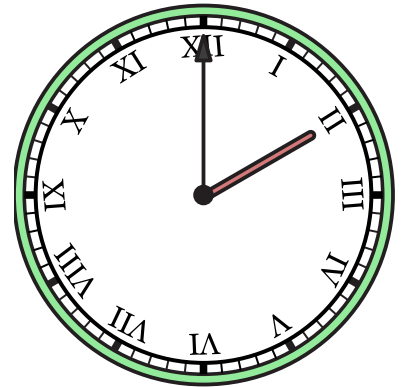
4) 3:30



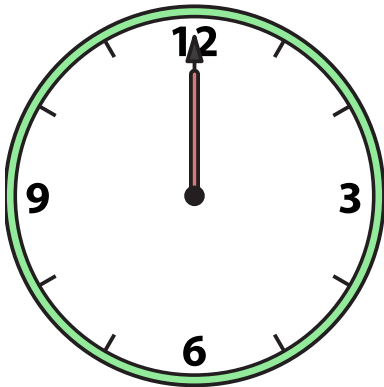
5) 1:00



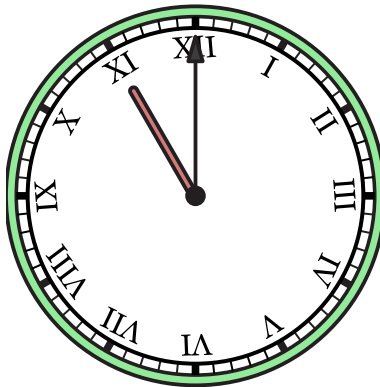
6) 2:00



7) 12:00



8) 11:00



9) 11:30

