



Draw the hour and minute hand on the clock so it represents the time shown.

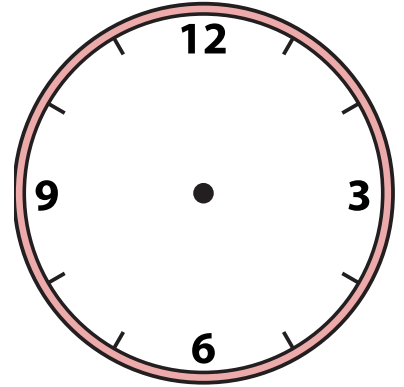
1) 10:21



2) 1:48



3) 6:36



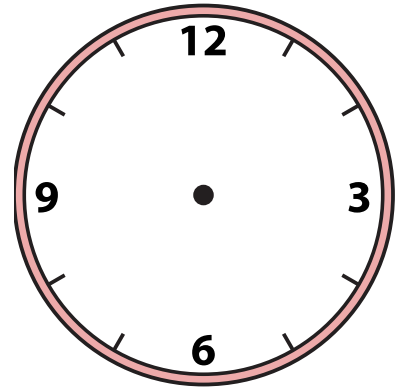
4) 5:25



5) 7:48



6) 10:14



7) 10:27



8) 12:51



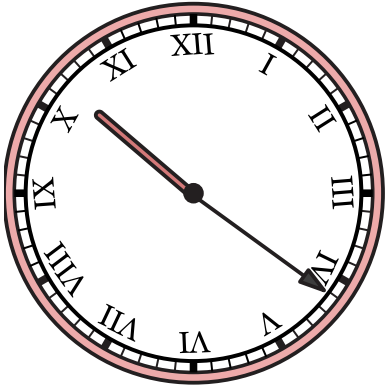
9) 9:10



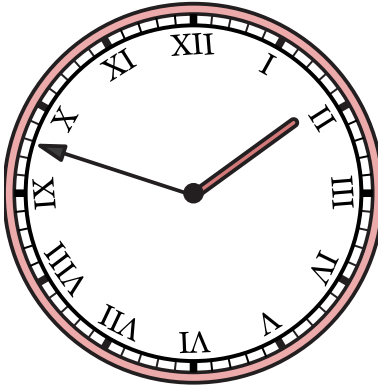


Draw the hour and minute hand on the clock so it represents the time shown.

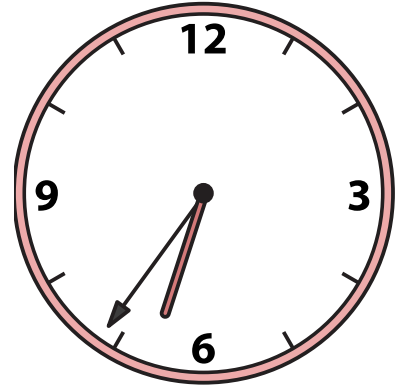
1) 10:21



2) 1:48



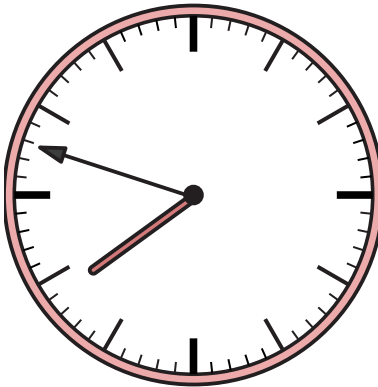
3) 6:36



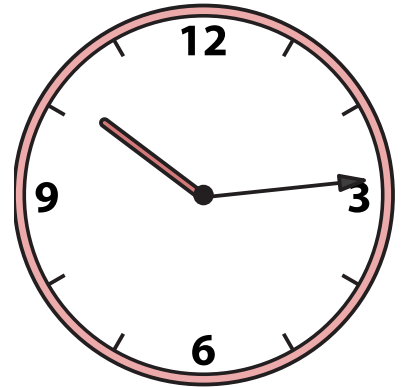
4) 5:25



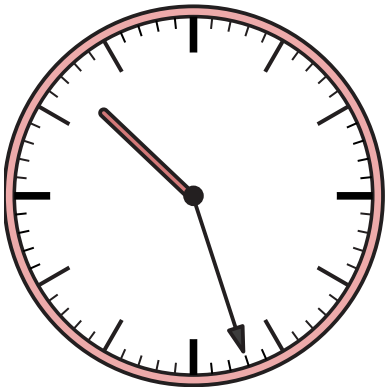
5) 7:48



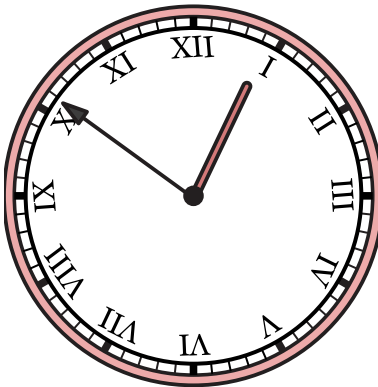
6) 10:14



7) 10:27



8) 12:51



9) 9:10

