

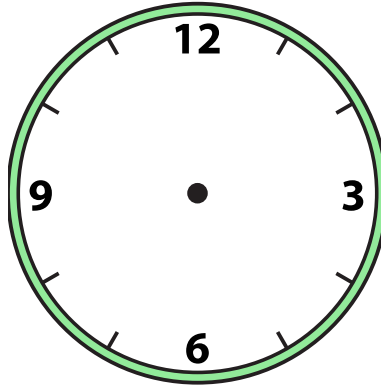


Draw the hour and minute hand on the clock so it represents the time shown.

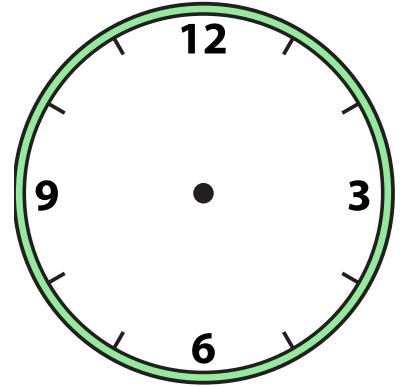
1) 4:30



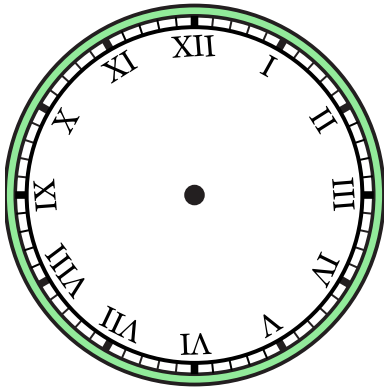
2) 10:00



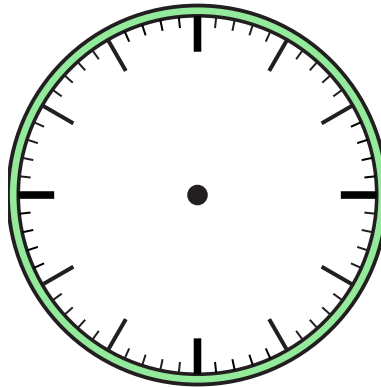
3) 12:00



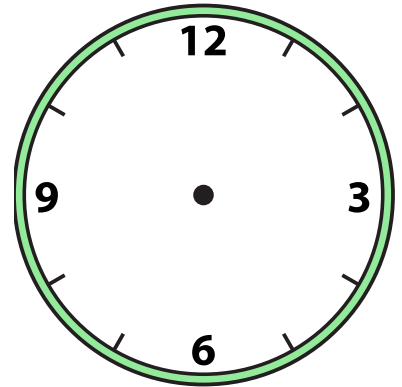
4) 4:00



5) 6:30



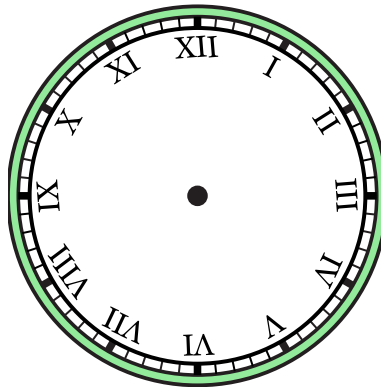
6) 8:30



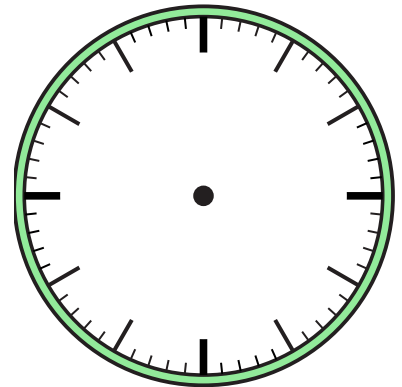
7) 5:30



8) 9:00



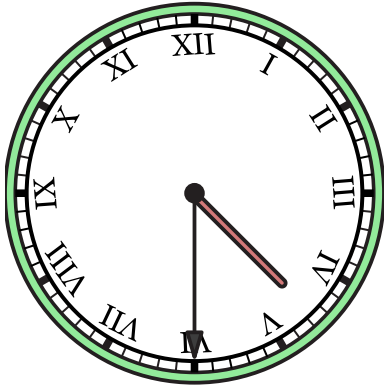
9) 1:00



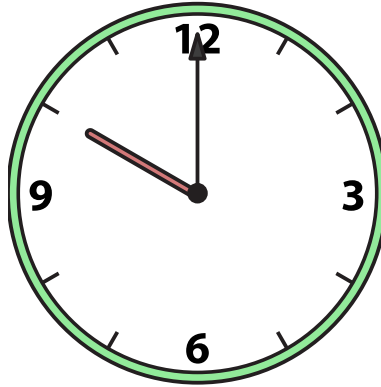


Draw the hour and minute hand on the clock so it represents the time shown.

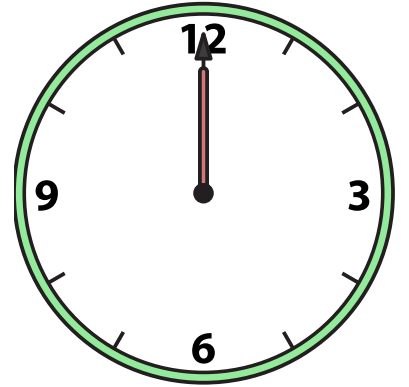
1) 4:30



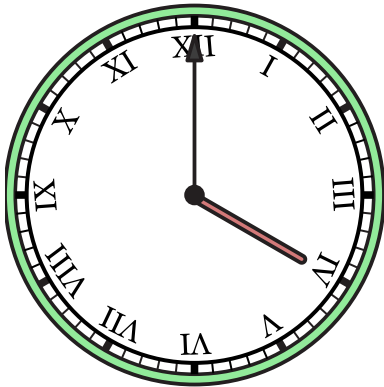
2) 10:00



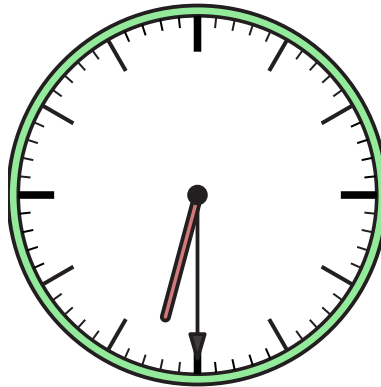
3) 12:00



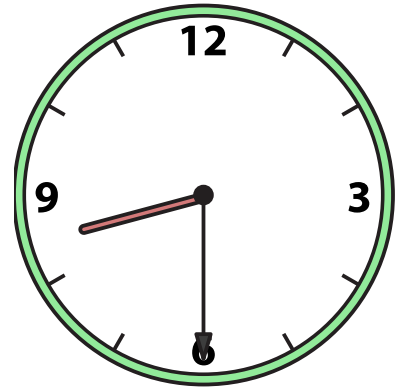
4) 4:00



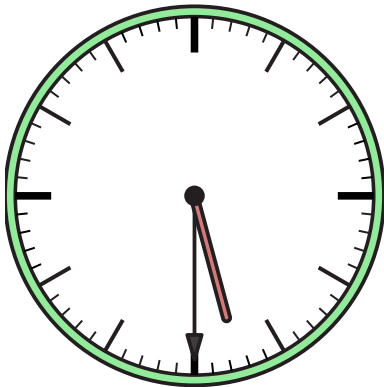
5) 6:30



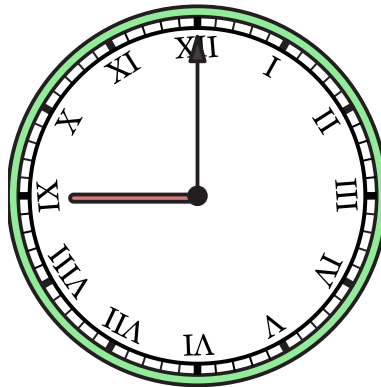
6) 8:30



7) 5:30



8) 9:00



9) 1:00

