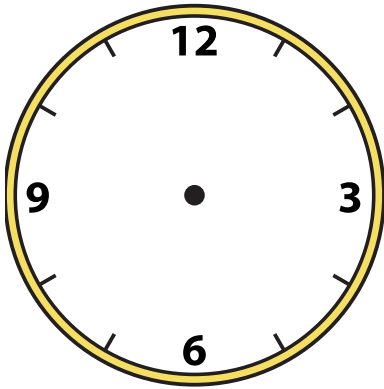


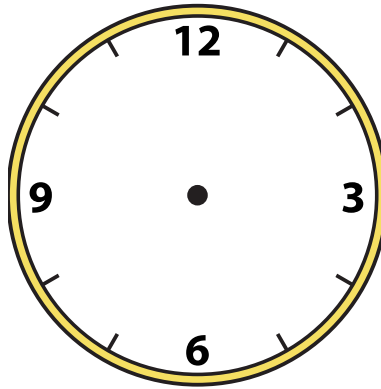


Draw the hour and minute hand on the clock so it represents the time shown.

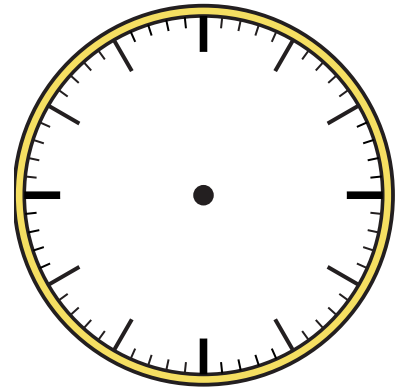
1) 12:00



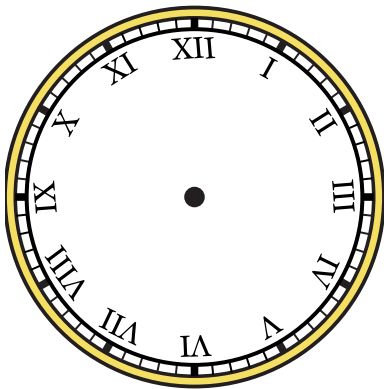
2) 5:30



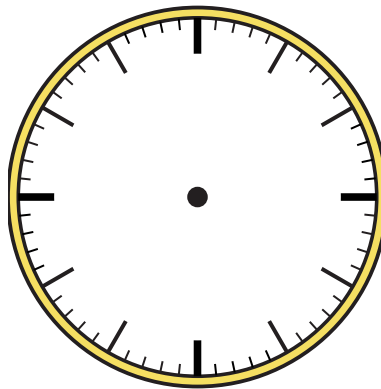
3) 8:45



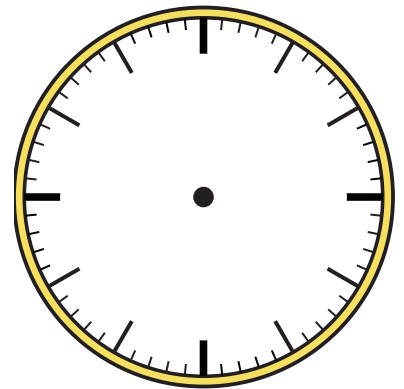
4) 7:00



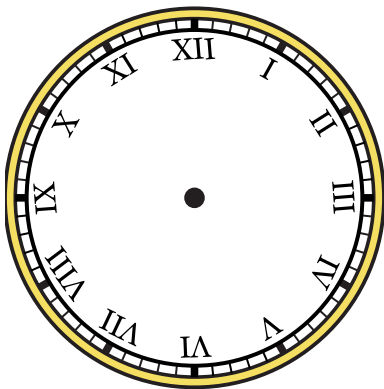
5) 4:45



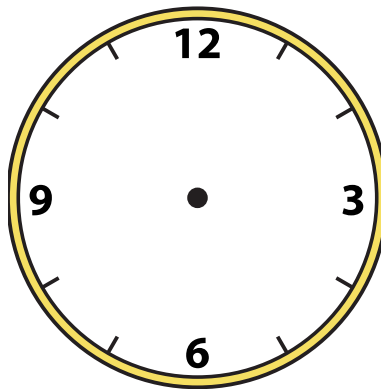
6) 9:30



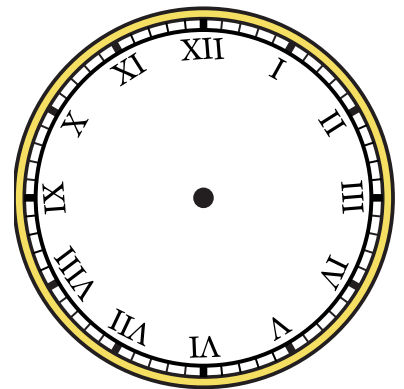
7) 12:15



8) 12:45



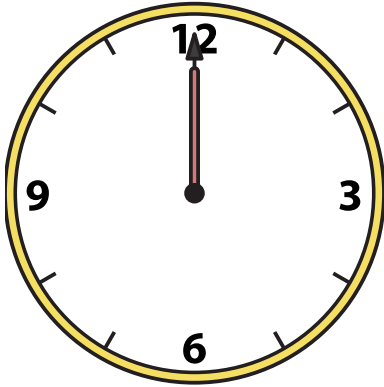
9) 8:30



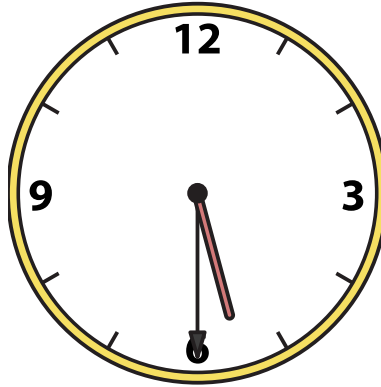


Draw the hour and minute hand on the clock so it represents the time shown.

1) 12:00



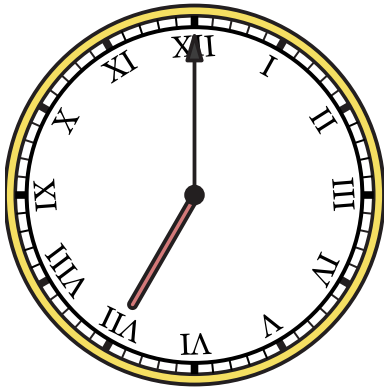
2) 5:30



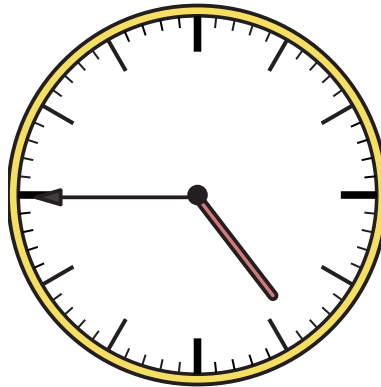
3) 8:45



4) 7:00



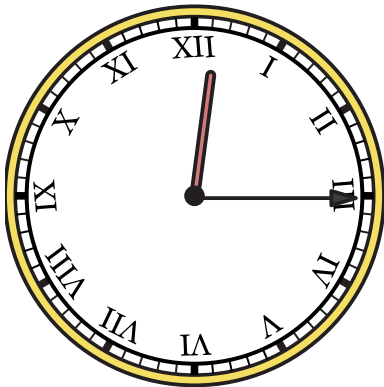
5) 4:45



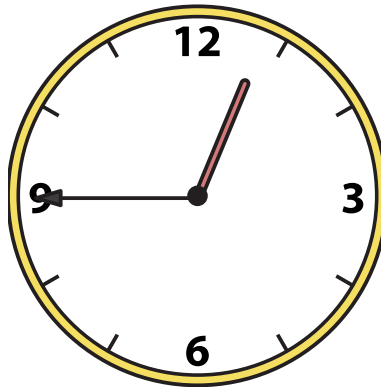
6) 9:30



7) 12:15



8) 12:45



9) 8:30

