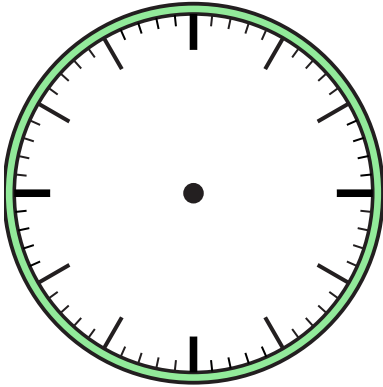


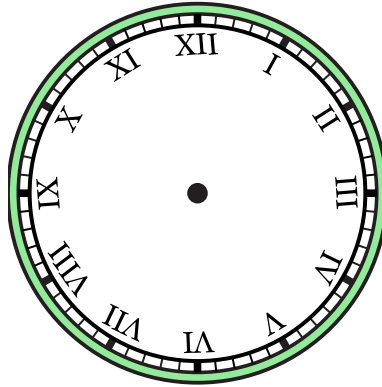


Draw the hour and minute hand on the clock so it represents the time shown.

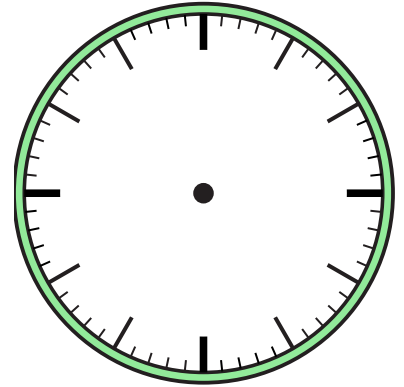
1) 4:00



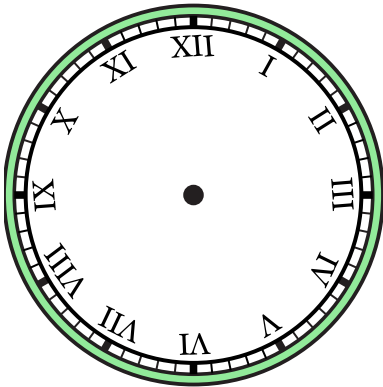
2) 11:00



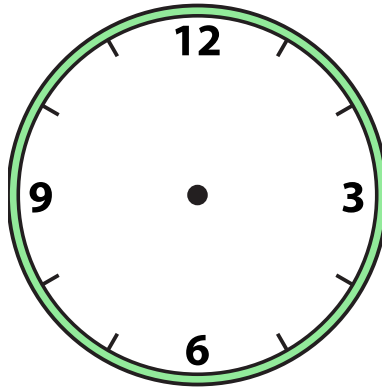
3) 8:30



4) 1:30



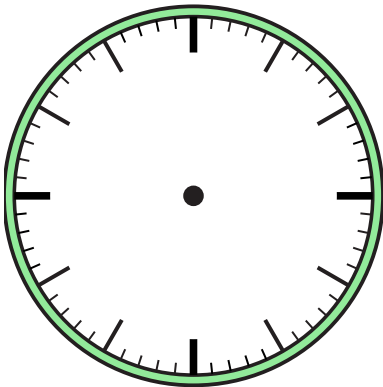
5) 12:30



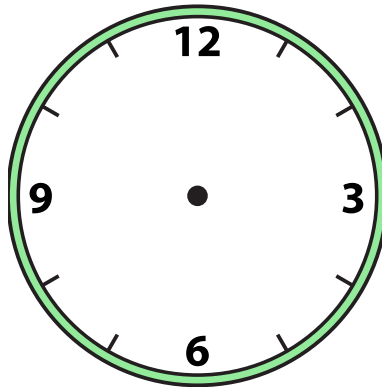
6) 2:30



7) 10:30



8) 12:00



9) 5:00



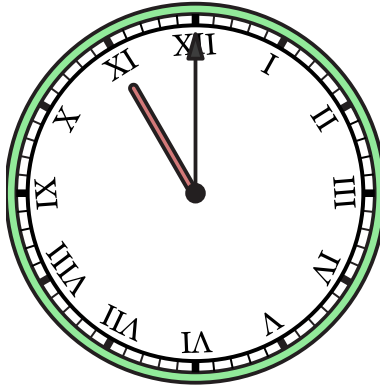


Draw the hour and minute hand on the clock so it represents the time shown.

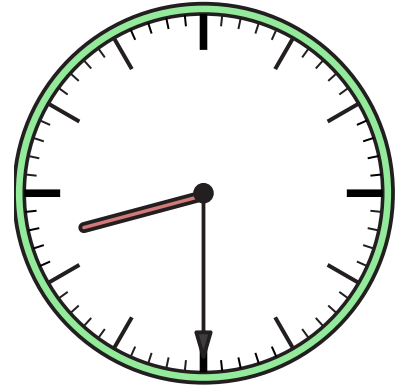
1) 4:00



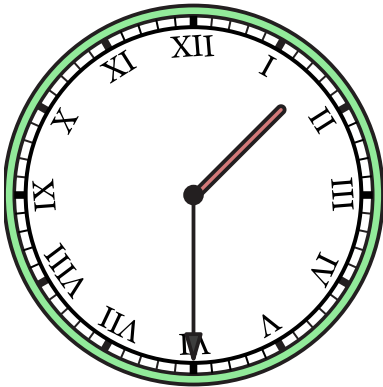
2) 11:00



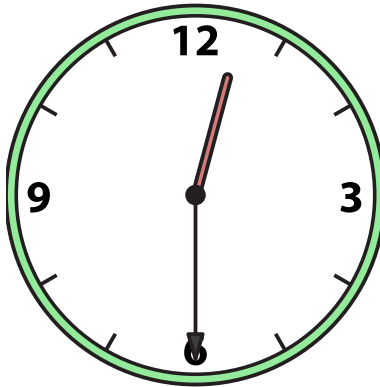
3) 8:30



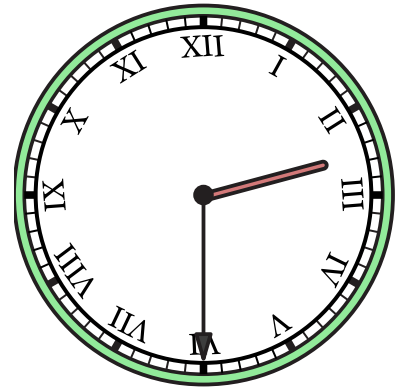
4) 1:30



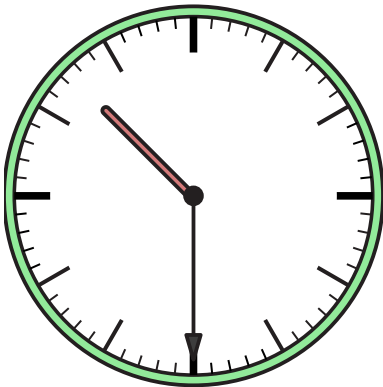
5) 12:30



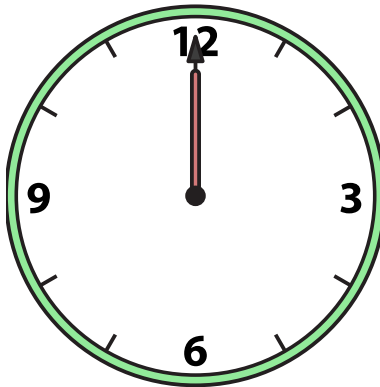
6) 2:30



7) 10:30



8) 12:00



9) 5:00

