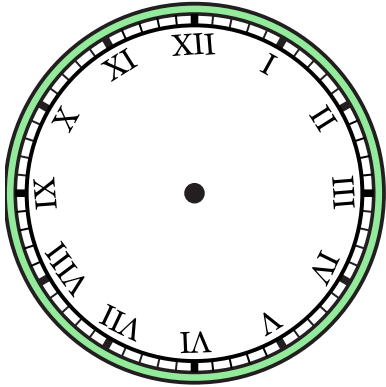


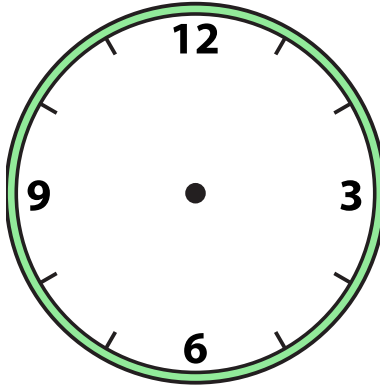


Draw the hour and minute hand on the clock so it represents the time shown.

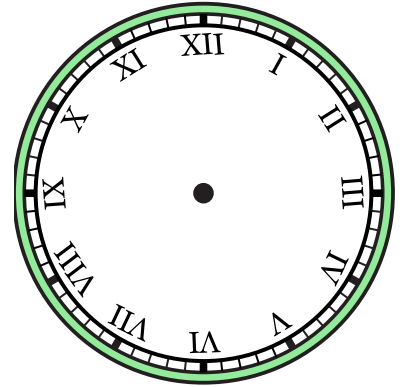
1) 12:00



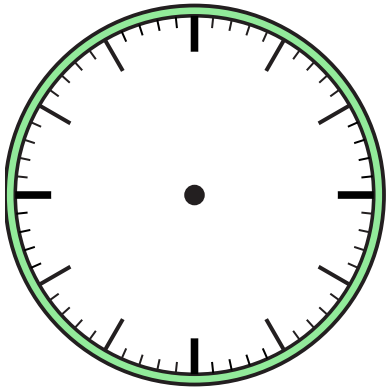
2) 9:30



3) 8:30



4) 2:30



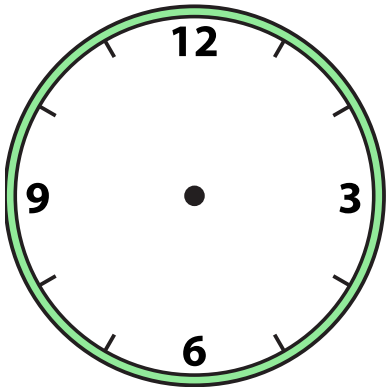
5) 10:30



6) 4:30



7) 5:30



8) 11:30



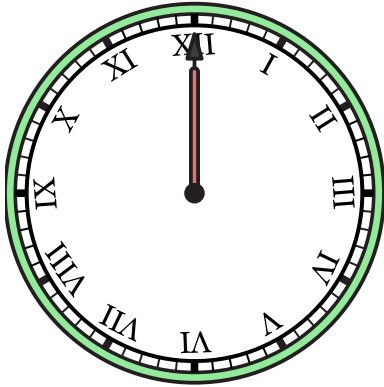
9) 1:30



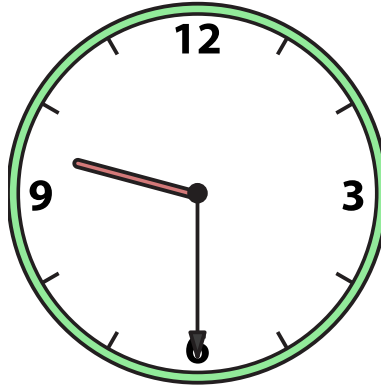


Draw the hour and minute hand on the clock so it represents the time shown.

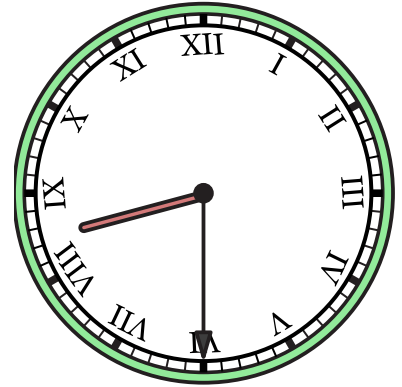
1) 12:00



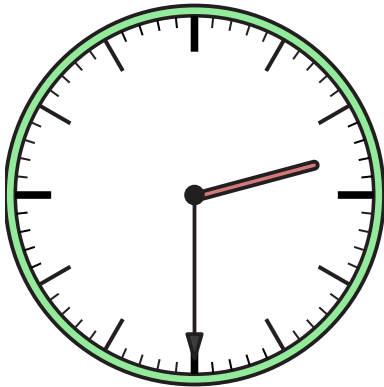
2) 9:30



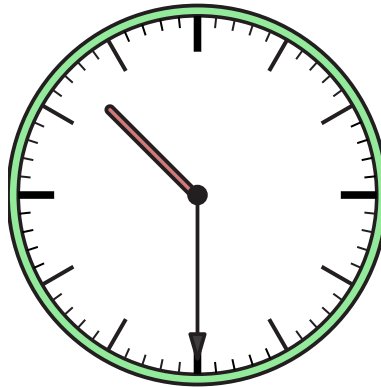
3) 8:30



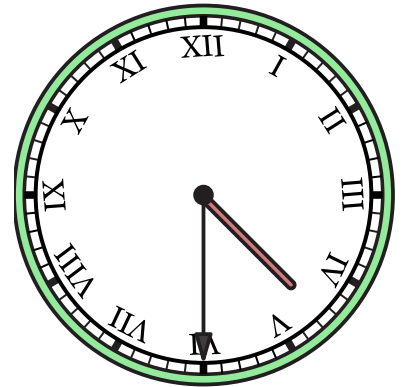
4) 2:30



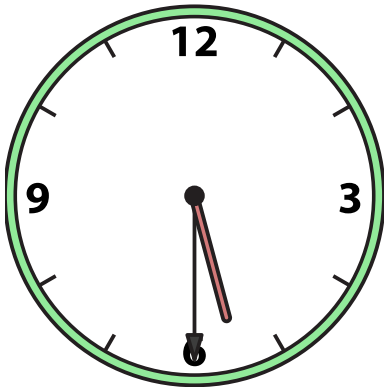
5) 10:30



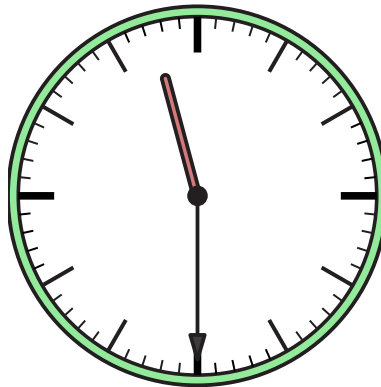
6) 4:30



7) 5:30



8) 11:30



9) 1:30

