



Use the visual model to solve each problem.

$$4\frac{3}{5} - 2\frac{4}{5} = ?$$

To solve a fraction subtraction problem one strategy is to shade in the starting amount first

($4\frac{3}{5}$)



Next mark off the wholes (2).



Finally mark off the fraction $\frac{4}{5}$.



Now we can see that $4\frac{3}{5} - 2\frac{4}{5} = 1\frac{4}{5}$

1) $6\frac{1}{5} - 2\frac{4}{5} =$

2) $5\frac{8}{10} - 2\frac{5}{10} =$

3) $7\frac{7}{8} - 5\frac{2}{8} =$

4) $4\frac{2}{4} - 1\frac{1}{4} =$

5) $3\frac{1}{3} - 1\frac{1}{3} =$

6) $6\frac{5}{8} - 3\frac{2}{8} =$

7) $6\frac{9}{12} - 3\frac{8}{12} =$

8) $5\frac{1}{4} - 1\frac{3}{4} =$

9) $7\frac{11}{12} - 3\frac{7}{12} =$

10) $5\frac{1}{3} - 2\frac{1}{3} =$

Answers

1. _____

2. _____

3. _____

4. _____

5. _____

6. _____

7. _____

8. _____

9. _____

10. _____



Use the visual model to solve each problem.

$$4 \frac{3}{5} - 2 \frac{4}{5} = ?$$

To solve a fraction subtraction problem one strategy is to shade in the starting amount first

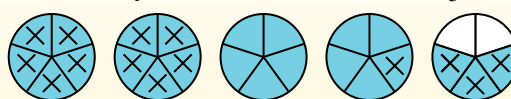
(4 ³/₅)



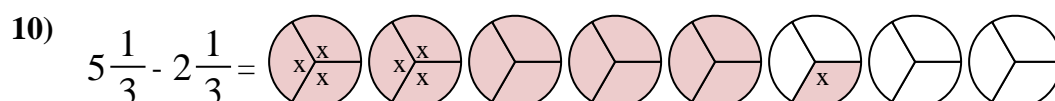
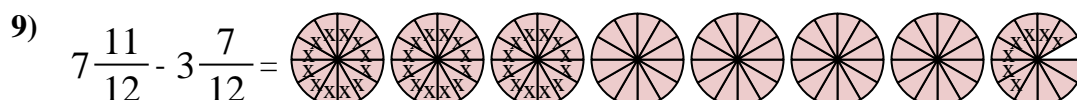
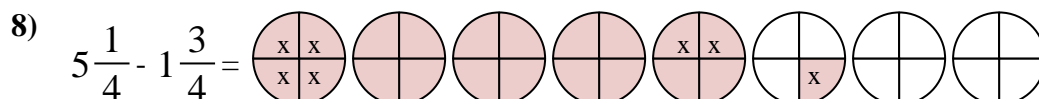
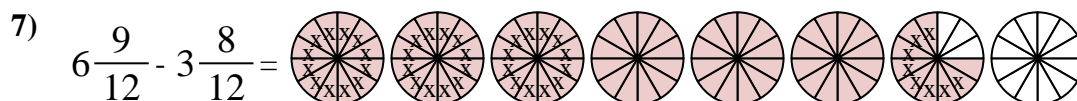
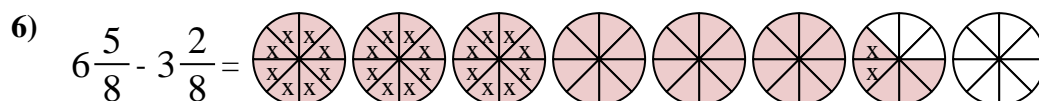
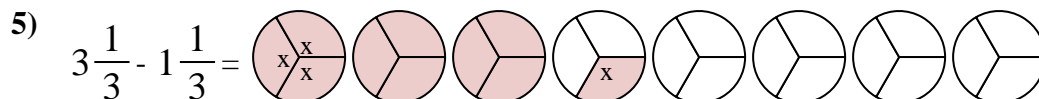
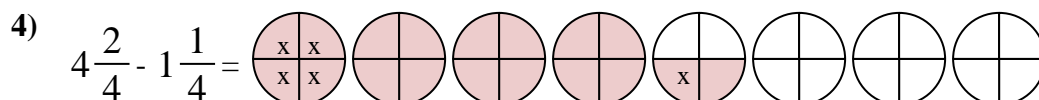
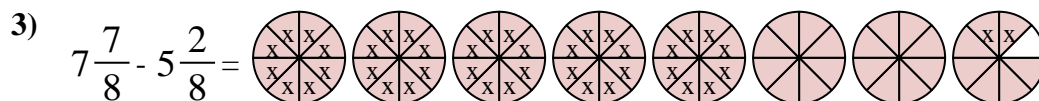
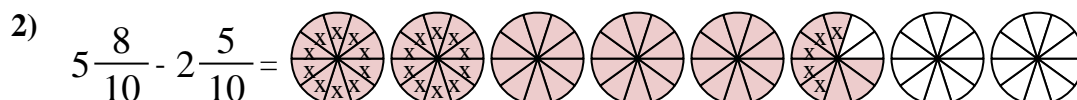
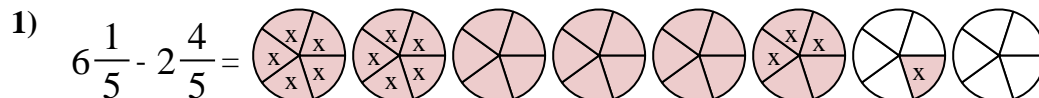
Next mark off the wholes (2).



Finally mark off the fraction ⁴/₅.



Now we can see that $4 \frac{3}{5} - 2 \frac{4}{5} = 1 \frac{4}{5}$



Answers

1. 3²/₅

2. 3³/₁₀

3. 2⁵/₈

4. 3¹/₄

5. 2⁰/₃

6. 3³/₈

7. 3¹/₁₂

8. 3²/₄

9. 4⁴/₁₂

10. 3⁰/₃