



Use the visual model to solve each problem.

$$4 \frac{3}{5} - 2 \frac{4}{5} = ?$$

To solve a fraction subtraction problem one strategy is to shade in the starting amount first

(4  $\frac{3}{5}$ )



Next mark off the wholes (2).



Finally mark off the fraction  $\frac{4}{5}$ .



Now we can see that  $4 \frac{3}{5} - 2 \frac{4}{5} = 1 \frac{4}{5}$

1)  $5 \frac{1}{5} - 2 \frac{4}{5} =$

2)  $5 \frac{1}{5} - 3 \frac{3}{5} =$

3)  $3 \frac{1}{4} - 1 \frac{1}{4} =$

4)  $6 \frac{9}{12} - 3 \frac{2}{12} =$

5)  $4 \frac{7}{10} - 1 \frac{1}{10} =$

6)  $6 \frac{1}{4} - 1 \frac{3}{4} =$

7)  $5 \frac{7}{8} - 1 \frac{2}{8} =$

8)  $4 \frac{3}{5} - 1 \frac{2}{5} =$

9)  $4 \frac{11}{12} - 1 \frac{10}{12} =$

10)  $3 \frac{7}{10} - 1 \frac{4}{10} =$

## Answers

1. \_\_\_\_\_

2. \_\_\_\_\_

3. \_\_\_\_\_

4. \_\_\_\_\_

5. \_\_\_\_\_

6. \_\_\_\_\_

7. \_\_\_\_\_

8. \_\_\_\_\_

9. \_\_\_\_\_

10. \_\_\_\_\_



Use the visual model to solve each problem.

$$4 \frac{3}{5} - 2 \frac{4}{5} = ?$$

To solve a fraction subtraction problem one strategy is to shade in the starting amount first

$$(4 \frac{3}{5})$$



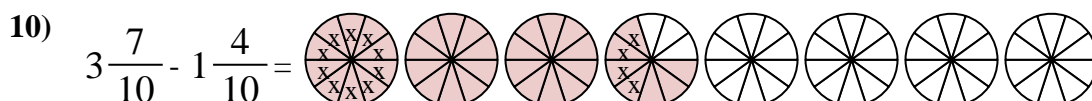
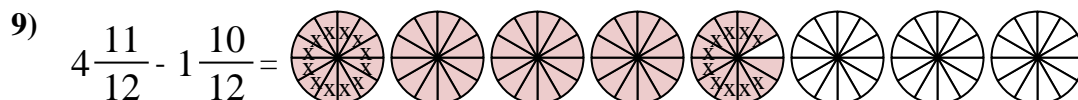
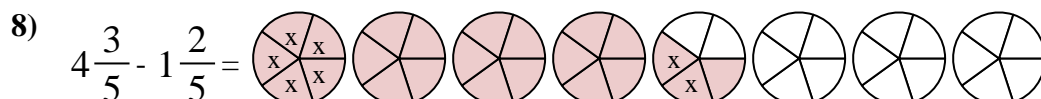
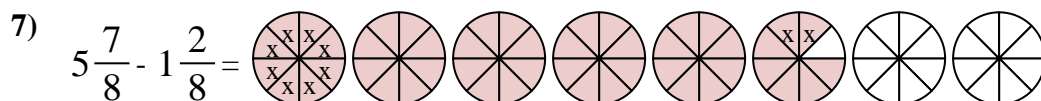
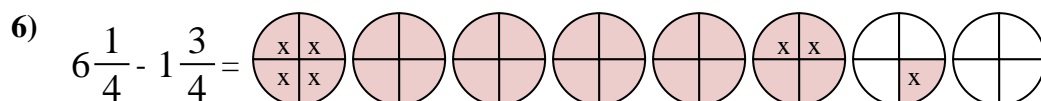
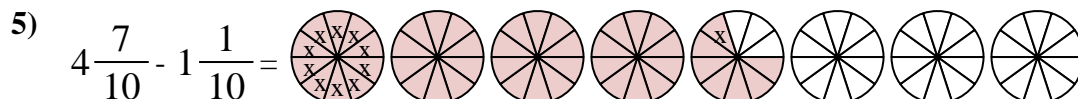
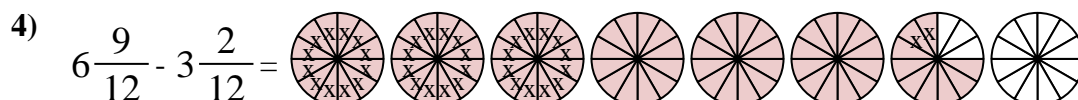
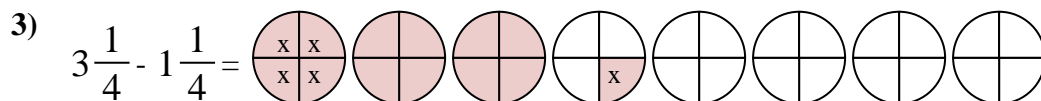
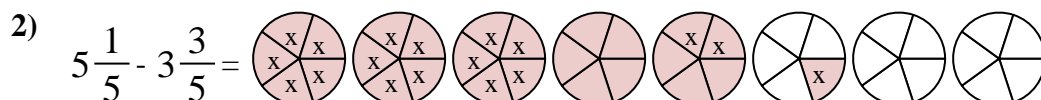
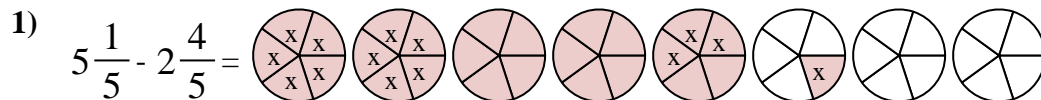
Next mark off the wholes (2).



Finally mark off the fraction  $\frac{4}{5}$ .



$$\text{Now we can see that } 4 \frac{3}{5} - 2 \frac{4}{5} = 1 \frac{4}{5}$$



## Answers

1.  $2 \frac{2}{5}$

2.  $1 \frac{3}{5}$

3.  $2 \frac{0}{4}$

4.  $3 \frac{7}{12}$

5.  $3 \frac{6}{10}$

6.  $4 \frac{2}{4}$

7.  $4 \frac{5}{8}$

8.  $3 \frac{1}{5}$

9.  $3 \frac{1}{12}$

10.  $2 \frac{3}{10}$